

Vermilion River Recreational



District Design Manual

a guidebook to revitalizing your neighborhood



evangelinecorridor.com



EVANGELINE CORRIDOR INITIATIVE CONSULTANT TEAM

Architects Southwest (ASW)
Project and Planning Consultant Team Lead

Right Angle
Public Outreach, Branding, and Communications

DPZ Partners
Planning and Urban Design Partner

Spackman Mossop + Michaels
Landscape Design

Urban3
Economic Planning and Implementation

TND Engineering
Transportation Engineering and Streets

Todd Bressi
Public and Civic Art

Gateway Planning
Infrastructure and Government Policy Consultant

ACKNOWLEDGEMENTS

We would like to acknowledge all those who made this DESIGN MANUAL possible, including the following individuals:

Evangeline Thruway
Redevelopment Team (ETRT)

Skyra Rideaux, Chair
Tina Shelvin Bingham, Vice Chair
Stephen Bartley
Ben Berthelot
Kevin Blanchard
David Cheramie
Shelton Cobb
Mitzi Moss Duhon
Geoff Dyer
Robert Guercio
Alexander Lazard
Nathan Norris
John Petersen
Stephen Picou
Gretchen Vanicor
Harry Weiss
Kendall Wiltz

Lafayette Consolidated
Government (LCG)

Joel Robideaux
Mayor-President
Lowell Duhon
Chief Administrative Officer
Carlee Alm-LaBar
Director of Development
and Planning
Neil LeBouef
Planner II and Project Manager
Cathie Gilbert
Planning Manager
Rachel Conques
Planner II
Emily Neustrom
Planner II
Cydra Wingerter
Chief Communications Officer
Warren Abadie, PE
City/Parish Transportation Engineer

Lafayette City-Parish Council

Kevin Naquin
Jay Castille
Patrick Lewis
Kenneth Boudreaux
Jared Bellard
Bruce M. Conque
Nanette Cook
Liz W. Hebert
William G. Theriot

Lafayette Planning Commission

Michael W. Brown
John J. Guilbeau, Chairperson
Lynne Guy
Thomas Hooks
William E. Kellner
William Tyler Roy
Sevie Zeller, Vice-Chairperson



We would also like to thank the hundreds of local residents, property owners, business owners, and neighborhood community groups for their participation and input!

*This material is based on work supported by the FHWA under Grant Agreement P-8.
Any opinions, findings, and conclusions or recommendations expressed in this publication are those of the Author(s) and do not necessarily reflect the view of the FHWA.*

TABLE OF CONTENTS

01 INTRODUCTION
The Evangeline Corridor Initiative 5

02 YOUR DISTRICT
District Profile 6
Community Voices and Project Timeline 6
District Challenges 7
Community Planning 7

03 DISTRICT OPPORTUNITIES
Strengths 8
Strategies 9
Networks: Community Nodes and Streetscapes 10-13

04 CATALYST PROJECTS
What are Catalyst Projects? 14-15
Ranking Priorities 16-17
User Guide 18-19
Feature Project 1 20-21
Feature Project 2 22-23
Feature Project 3 24-25
Additional Potential Projects 26-27

05 YOUR DISTRICT'S FUTURE
Community Guidelines and Goals 34
Community Information Resources 35

01 INTRODUCTION

THE EVANGELINE CORRIDOR INITIATIVE

PROJECT GOALS

Reconnect neighborhoods

Create spaces for healthy activities

Improve safety

Increase economic investment

Improve job opportunities

THE I-49 CONNECTOR

Lafayette, Louisiana is preparing for a big change: the Evangeline Thruway will become an interstate highway. A 5.5-mile portion of the Evangeline Thruway, from I-10 to US Highway 90 near Kaliste Saloom Road (near the Lafayette Regional Airport) will become a segment of I-49. This federal project, which is already underway, will be carried out by the Louisiana Department of Transportation.

Locally, this change will help relieve traffic congestion and create a safer, faster hurricane evacuation route. It will also become part of an international network. When I-49 is complete, it will connect New Orleans, Louisiana with Winnipeg, Canada.

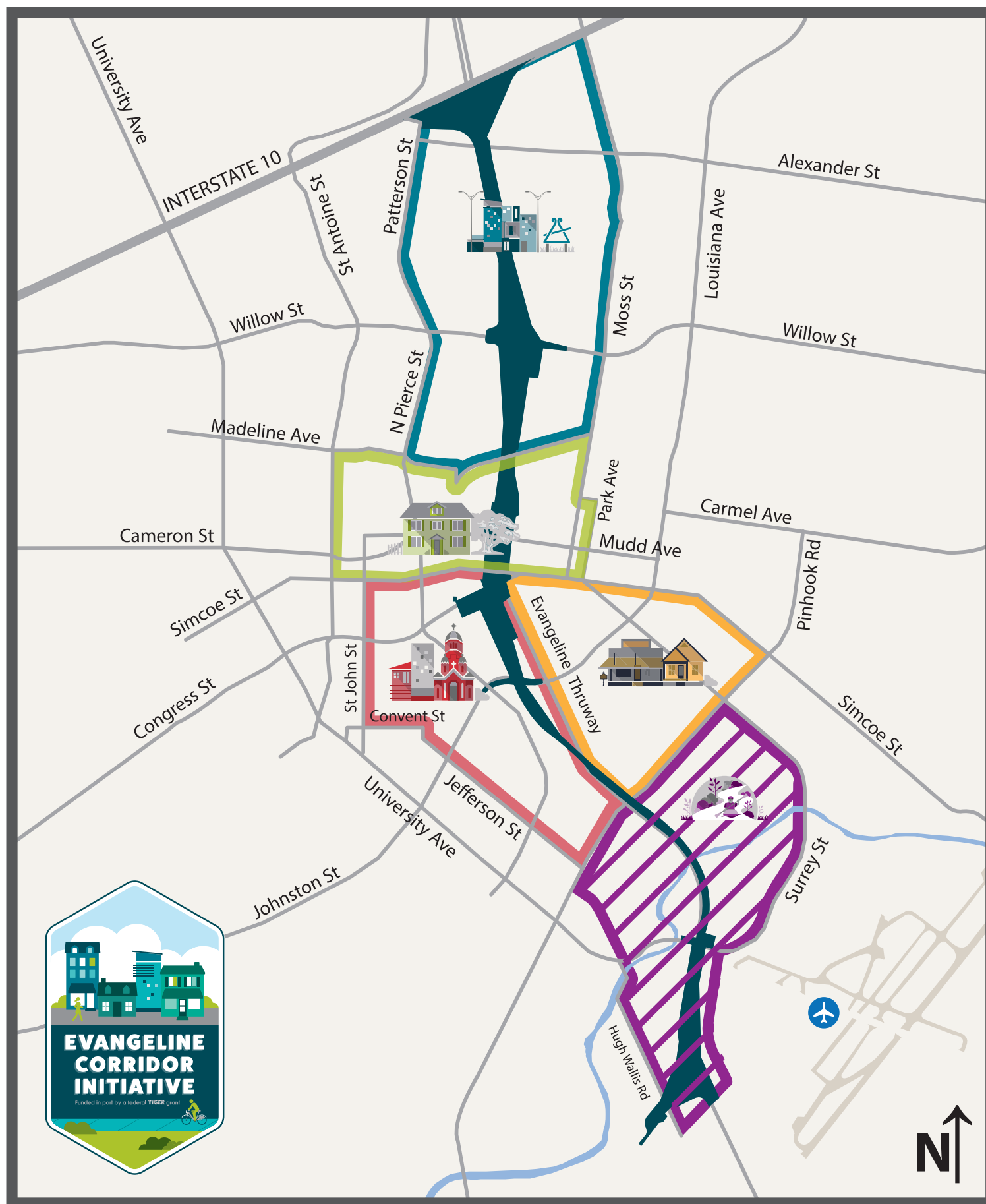
CHANGE AND OPPORTUNITY

This coming change is also an opportunity. For decades, neighborhoods in the Evangeline Corridor — areas closest to the I-49 Connector route — have been challenged by poverty, crime and low property values. This is an opportunity to make our neighborhoods stronger: to preserve unique cultures, reverse blight and promote economic investment.

In 2016, Lafayette Consolidated Government received a federal grant for neighborhood planning. It created the Evangeline Corridor Initiative, or ECI, to reduce the negative effects of the interstate highway and create guidelines for improvement.

PEOPLE IN ACTION

The Evangeline Corridor Initiative began with neighbors, business owners, and community leaders who shared their vision for a better Corridor. With the help of planners and designers, engineers, and architects, that community vision has become a plan of action.



Gateway District
 Sterling Grove / Simcoe / La Place District
 Downtown / Freetown-Port Rico District

McComb-Veazey District
 Vermilion River Recreational District
 Interstate 49 Pathway



02 YOUR DISTRICT

COMMUNITY VOICES

The residents of this district share a vision for better housing, improved safety, streets and sidewalks that accommodate pedestrians, and improved connections to Downtown. They want to improve social and economic conditions while preserving and promoting cultural resources.

“Bring the river back.”

“Connectivity to Heymann Park is important.”

“Safety and security are important.”

“Grocery stores needed. I currently have to drive to the Oil Center.”

“Need river access – but so many private owners.”

“Lafayette is not an over the top place - just need to clean it up.”

DISTRICT PROFILE

The Vermilion Recreation District home to Heymann Park, Beaver Park and Vermilionville, all important cultural and recreational assets to the residents of the Evangeline Corridor and the Lafayette community as a whole. Unfortunately the accessibility between these adjacent recreational components is weak. The potential to re-imagine the interface between the McComb-Veazey neighborhood, Heymann Park and the Vermilion River is key for growth in this area of the corridor. There is potential to attract more visitors and increase amenities within the public realm. Residents are restoring homes and creating community ties.

Progress has been made towards renewed interest in river-based activities, and local organizations recognize the value and opportunity in revitalizing the Vermilion River asset and offering greater access.



DISTRICT CHALLENGES

- Flooding of the district due to its proximity to the River
- Lack of local services such as grocery stores
- Underutilized areas including many vacant lots
- Dilapidated homes and properties need rehabilitation
- Heavy traffic along Pinhook and Surrey - need safety measures
- Uncertain infrastructure impacts on the environment
- Creating better access to the River
- River still perceived as dirty - trash in area still persists
- Connecting people to main attractions of District

COMMUNITY PLANNING

The Evangeline Corridor Initiative is based on the experiences and desires of district residents. In early 2016, the ECI Team began the planning process by meeting with small groups of neighborhood leaders, including community organizers and clergy members.

In May 2016, we invited all residents to attend the Vermilion Recreation District Workshop. ECI Team members listened while small groups of residents talked about what they valued most — and the areas of greatest concern. We captured their input by taking careful notes and by collecting district maps, hand-marked by workshop participants.

Professional planners studied this information to prepare for the ECI Charrette, an intensive planning session held in late May 2016. During the week-long event, the design team created drawings to illustrate community ideas along with their professional recommendations. Residents participated by asking the design team questions and giving them feedback to guide their work.

The ECI planning team also used this information to generate Catalyst Projects, community improvements with the potential to spark investment and create momentum in revitalizing the Corridor. Using the ECI Meeting-in-a-Box toolkit, residents held additional community meetings to choose high-priority Catalyst Projects.

2016

Beginning 2016 Project Funded

6

Spring 2016 District Workshops

2017

May 21 – 27, 2016 Charrette Week

April 26 – May 31, 2017 Community Meetings (Meetings in a Box)

June 8, 2017 Open House

2018

May 2018 City-Parish Council Adoption

March 2018 Open Houses: Final Report, Design Manuals, and Implementation Planning

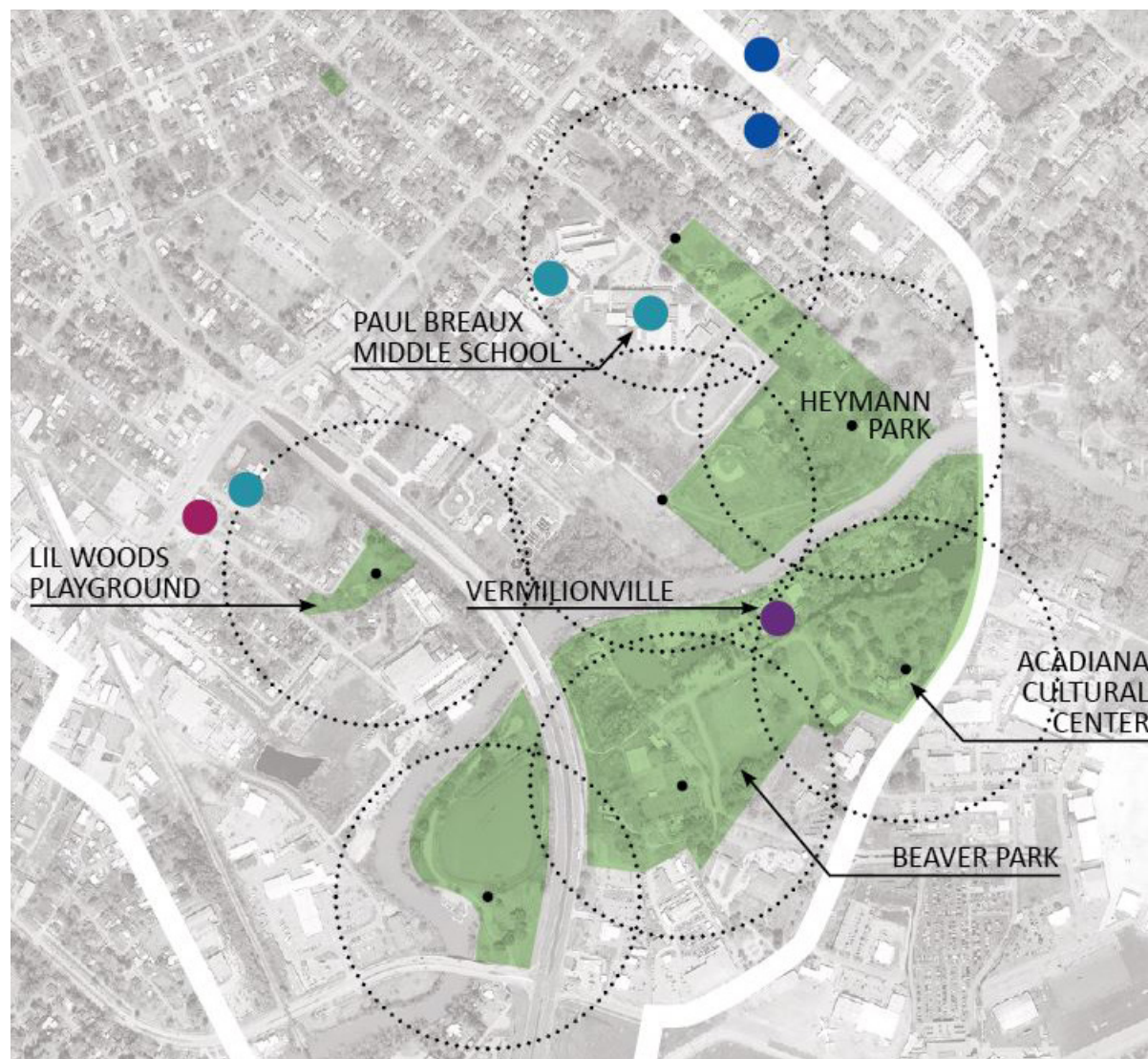
7

03 DISTRICT OPPORTUNITIES

STRENGTHS

The Vermilion Recreation District includes the city's most public interface with the Vermilion River. This evolving natural resource and the adjacent Heymann and Beaver Parks provide vast opportunities for sustained recreational and leisure activity and community growth. The cultural magnets of Vermilionville and the Acadiana Cultural Center attracts locals and visitors daily for events and educational history.

Paul Breaux Middle School, which anchors the eastern portion of the district, has long been a strong institutional asset for the area and can continue to serve the local school district and city residents through various programs and community events.



● Social/Health ● Religious ● Civic ● Parks/Plazas ● Culture ● Education ○ 3-5 minute walk zone

STRATEGIES

1. PRESERVE AND ENHANCE A MIX OF COMMERCIAL AND LIGHT-INDUSTRIAL USE ALONG PINHOOK RD.

Provide consistent urban frontage from the Evangeline Thruway to University Ave., Introduce strategic multi-family residential and live-work uses where feasible.

2. ENHANCE NEIGHBORHOOD SCALE RETAIL AND COMMERCIAL USE ON PINHOOK RD.

Focus on area between Evangeline Thruway and Gauthier Rd. (target Pack & Paddle and vacant lot fronting Gethsemane Church). Encourage live-work units where feasible.

3. MAINTAIN AND ENHANCE DISTRICT'S INSTITUTIONAL AND FAITH-BASED ACTIVITY.

Focus on Gethsemane Church and Paul Breaux Middle School. Integrate with new residential development.

4. EXPLORE NEIGHBORHOOD-SCALE COMMERCIAL ALONG S. ORANGE ST.

Enhance S. Orange as a local gateway into Heymann Park. Additional commercial services will create activity.

5. FOSTER INTEGRATED MIXED-COMMERCIAL SERVICE AND LIGHT INDUSTRIAL USE ALONG SURREY ST.

Complement existing commercial businesses and continue activated urban fabric all the way to the Vermilion River.

6. PRESERVE AND ENHANCE EXISTING PARKS.

Revive and better connect recreational green spaces of Heymann and Beaver Parks along the Vermilion river.

7. LEVERAGE CULTURAL-INSTITUTION TO ATTRACT SUSTAINED COMMUNITY GROWTH.

Promote Vermilionville connections alongside consistent activity at Heymann Park and Beaver Park.



Primary Street focus Mixed-use streetscape Mixed-use Redevelopment Potential Green Space Use Existing Recreational Use Existing Institutional Use

03 DISTRICT OPPORTUNITIES

NETWORKS: COMMUNITY NODES

WHAT IS A COMMUNITY NODE?

A community node is a place where people come together for specific activities. Examples of community nodes include employment centers, community or entertainment centers, shopping centers or multi-functional activity centers.

Community nodes can support diversity and shared experiences, build community pride and promote economic development.

RECOMMENDATIONS

Primary nodes for revitalization focus in the Vermilion Recreation District are concentrated around the Paul Breau Middle School site reaching to Pinhook Rd., Heymann Park, Beaver Park/Vermilionville, and the old Trappey's Plant site along Barnett St. and Guidry St. west of the Evangeline Thruway. The node encompassing Paul Breau Middle School captures the local neighborhood fabric, while the node of Heymann Park captures the Vermilion River edge across to Vermilionville. These nodes in particular represent significant potential for growth activity in the area.

OLD TRAPPEY PLANT / NEIGHBORHOOD NODE



GAUTHIER RD. / VERMILION CONFERENCE NODE



EXISTING SIGNIFICANT BUILDINGS GREEN SPACE PRIVATE PROPERTY POTENTIAL INFILL

S. ORANGE ST. / PAUL BREAU SCHOOL NODE



HEYMANN PARK / VERMILIONVILLE NODE



EXISTING SIGNIFICANT BUILDINGS GREEN SPACE PRIVATE PROPERTY POTENTIAL INFILL



03 DISTRICT OPPORTUNITIES

NETWORKS: STREETSCAPES

WHAT IS A STREETSCAPE?

A streetscape includes the street itself, as well as all the elements that go along with it, such as sidewalks and crosswalks, street lighting and seating, bike lanes and bus stops.

Well-designed streetscapes make neighborhoods safer for pedestrians, cyclists and drivers. They complement public transportation and attract investment. Streetscapes also express the personalities of individual neighborhoods, communities and the city as a whole.

Suggested improvements in the Evangeline Corridor follow the principles of Complete Streets, a nationally recognized approach to transportation design and policy.

RECOMMENDATIONS

Pinhook Rd. serves as the northwest edge to the Vermilion Recreation District. Here, an enhanced and repurposed streetscape could contribute to renewed growth and development along this major network connection. Improving this corridor will help better serve the neighborhood and recreational activity to the south.

Surrey St. on the east serves as another commercial and light industrial edge that could continue to redevelop in more pedestrian-friendly local service-oriented ways. Here, increased multi-modal transport offerings could create safe access and stronger connections to and from the Corridor.

Neighborhood streets such as S. Orange in particular not only offer appealing connections between the McComb-Veazey district, but could function as an enhanced neighborhood gateway to Heymann Park and the River. Enhance street features, and appropriate local business and housing infill can help define this unique and accessible passage.

Certain support streets such as Gauthier Rd. and Heymann Park Access could be restructured to align with the more organic nature of the park landscape. Streetscape improvements along Surrey, Pinhook, and S. Orange could include:

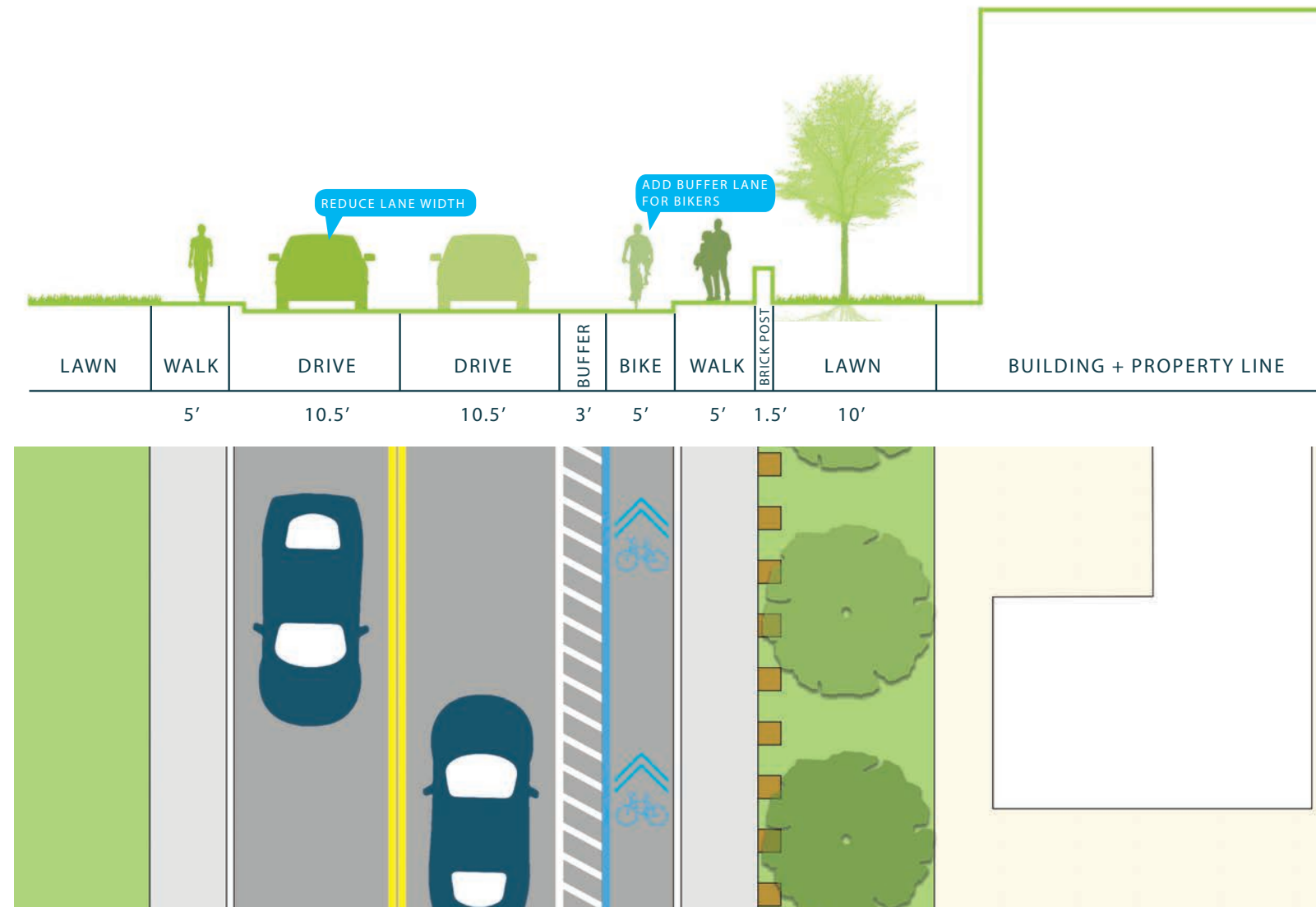
- Traffic-calming measures
- Accessible bus stops
- Wider sidewalks
- Street trees
- Bike lanes

COMPLETE STREETS

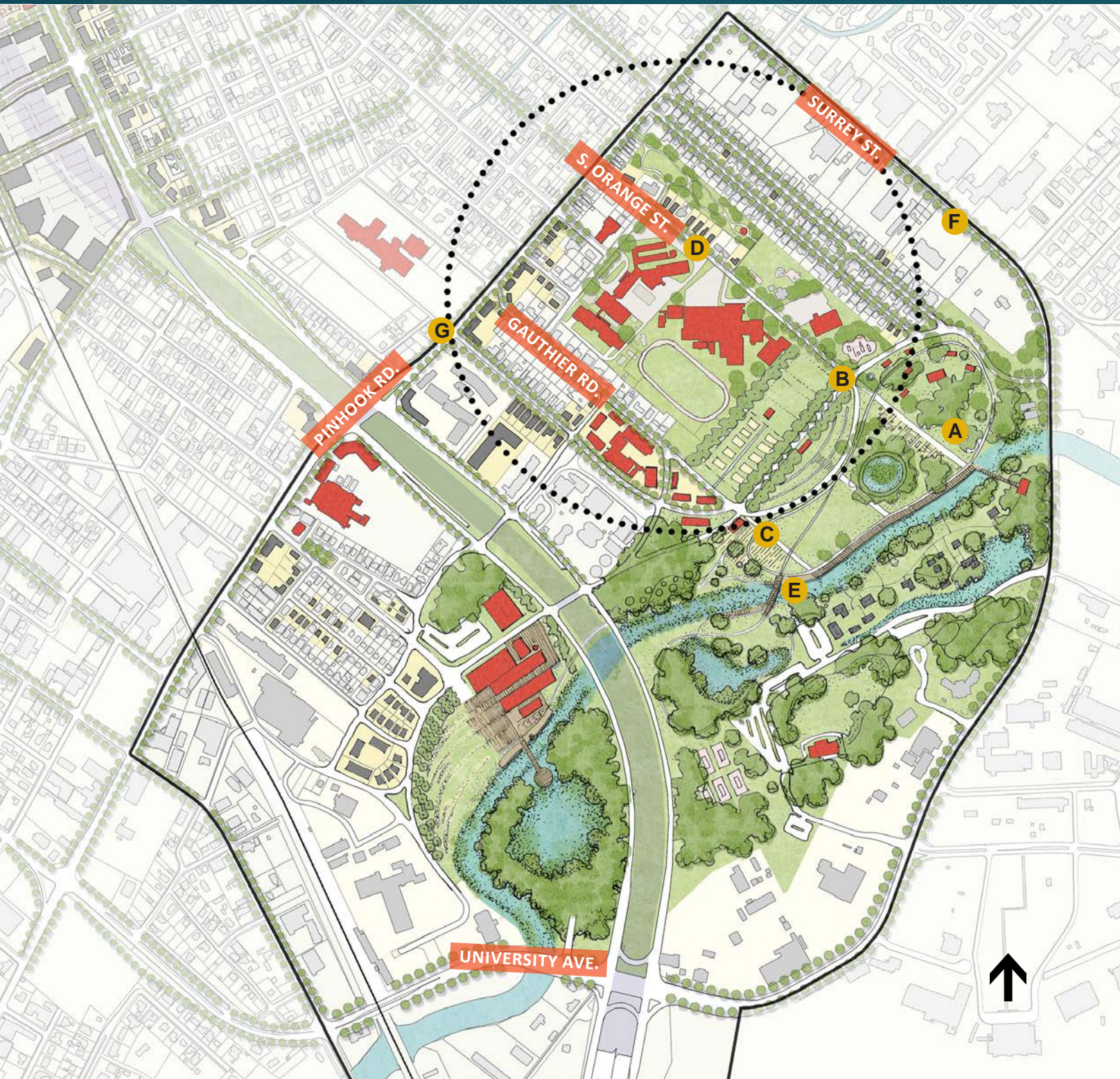
The term “Complete Streets” is a nationally recognized approach to transportation design and policy. Its core principle is that streets should be designed for the safety and convenience of everyone: drivers, pedestrians, bicyclists and those who use public transportation. Complete Streets include:

- safe crosswalks
- well-designed bike lanes and bus lanes
- on-street parking
- easy-to-understand traffic signals and signage
- street trees, landscaping and lighting

CONCEPTUAL DIAGRAM FOR STREET IMPROVEMENTS



04 CATALYST PROJECTS



● EXISTING SIGNIFICANT BUILDINGS
 ● GREEN SPACE
 ● PRIVATE PROPERTY
 ● POTENTIAL INFILL
 ● 3 - 5 MINUTE WALK ZONE

WHAT ARE CATALYST PROJECTS?

Catalyst Projects are proposed improvements that:

- Make neighborhoods safer and more inviting
- Provide needed services, such as access to transportation
- Attract investment, business development and jobs

See Chapter 5 of the ECI Final Report for implementation strategies and processes.

HOW WERE THEY DEVELOPED?

Ideas for Catalyst Projects came from residents. During community meetings, district workshops and Corridor-wide planning sessions, they told the ECI Team what was wanted and needed in their neighborhoods.

The professional planners on the ECI Team refined these ideas to create specific Catalyst Projects for each district. They also created Catalyst Projects based on formal planning already in place with Lafayette Consolidated Government, such as bus stop improvements.

CATALYST PROJECTS

- A Heymann Park retrofit
- B Historic identity and wayfinding
- C Community Farm at Vermilion Center
- D S. Orange streetscapes / park gateway
- E Pedestrian river crossing from Heymann Park to Vermilionville
- F Surrey St. street spot improvements
- G E. Pinhook Rd. street spot improvements

Several projects were identified for this district. Residents evaluated them at community meetings and a district-wide Open House. In general, there are two types of Catalyst Projects:

SWEAT-EQUITY PROJECTS

These projects are relatively simple. They can be achieved quickly, with little money, by the residents themselves before the city is able to act. However some aspect of these projects may be executed in coordination with the city. Examples of these types of projects include:

Community clean up/painting

Tree planting (within feasible r.o.w. allowance)

Community Gardens

Other projects may require additional time, money and planning. Public projects, such as bus shelters and bike lanes, require more advanced cooperation with government agencies. But the initiation of these more complex projects can result from sweat-equity efforts.

04 CATALYST PROJECTS

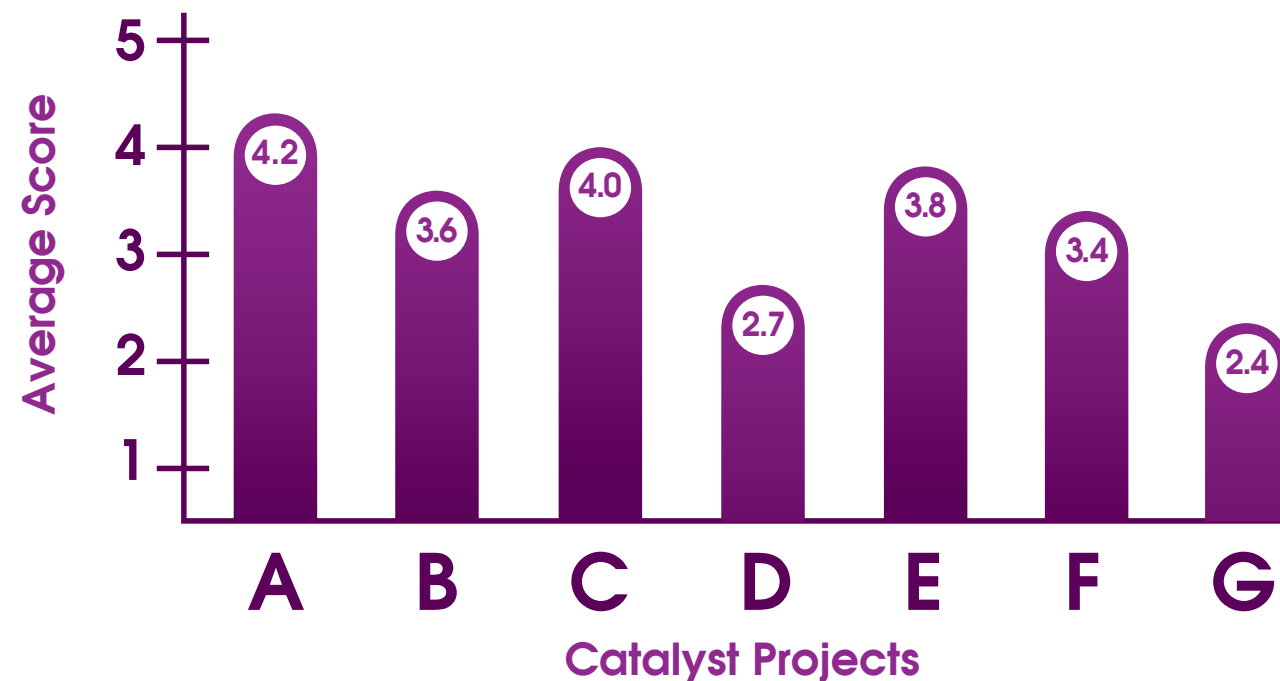
RANKING PRIORITIES

Residents, business owners and others weighed in on the importance of Catalyst Projects at Meeting-in-a-Box events, which were held in each district, and at a corridor-wide Open House at the Rosa Parks Transportation Center.

MEETING IN A BOX

Participants were asked which Catalyst Projects were most important/desirable and to give each project a ranking level from 1 to 5.

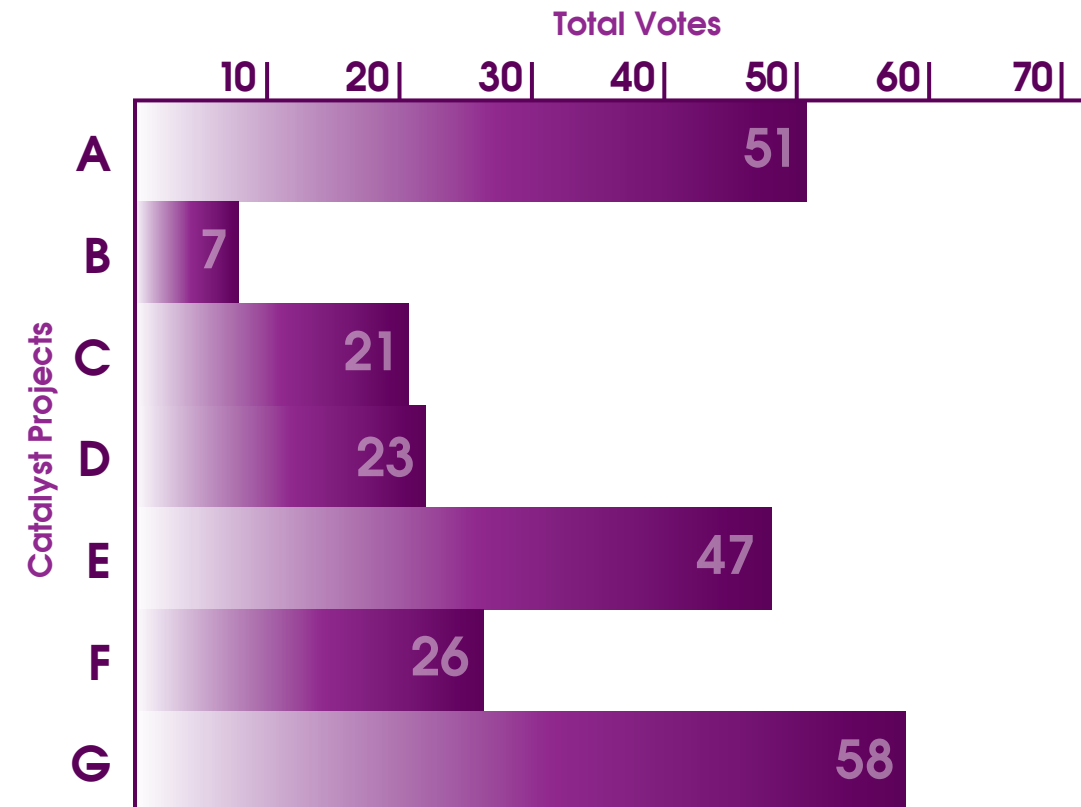
- 5 = Highly transformative and a top priority
- 4 = Excellent and important
- 3 = Good and worthwhile
- 2 = Fair and somewhat helpful
- 1 = Low level and less impactful



The catalyst projects featured on the following pages represent different concepts and reflect the wide-ranging opportunities that could exist in the district to promote comprehensive revitalization.

OPEN HOUSE

Maps were displayed for every district, showing the location of Catalyst Projects. Participants received five stickers (color-coded to represent each district). They were asked to place the stickers on the five Catalyst Projects within in each district they considered top priority.



04 CATALYST PROJECTS

USER GUIDE

Several Catalyst Projects have been identified for this district. The following pages highlight featured projects which were selected because they can help create neighborhood nodes in areas with the most need and/or activity.

OVERVIEW

Brief description of the Catalyst Project details and how the project was identified.

COMMUNITY BENEFITS & ACHIEVEMENT TARGETS

This offers a quick “report card” describing how each project will enhance community character and contribute to a better quality of life for residents, business owners, and visitors alike.

CONCEPT VISION

Images show design intent and help the community visualize what is being proposed. The concepts shown here are not final designs, but rather representations of the possible outcome and visions.

04 CATALYST PROJECTS

HEYMANN PARK

LANDSCAPE REDEVELOPMENT & SPACE IMPROVEMENTS



Residents and park patrons say they enjoy using the park, but also pointed out key concerns and issues such as isolated spaces, safety issues and substandard lighting.

RECOMMENDATIONS

Park retrofit strategy including space consolidation, landscape designs, and new lighting that enhances recreational experiences and provides better connection to the Vermilion River.

COMMUNITY BENEFITS

This project promotes:

- Redevelopment/reuse of existing sites
- Neighborhood connections
- Neighborhood beautification
- Community identity/interaction

ECI CONCEPTUAL VISION



1 New children's play area 2 Observation Tower 3 Multi-use path / river access 4 Sports courts 5 Education Garden

VERMILION RIVER RECREATIONAL DISTRICT

IMPLEMENTATION STRATEGY

WHO LEADS

Various LCG departments including the Parks and Recreation will spearhead this project with technical oversight from Department of Public Works.

WHO COLLABORATES

Bayou Vermilion District will be a primary collaborator along with local residents who have vested interest in the park transformation. Other local organizations and groups could initiate temporary activity on site.

WHO FUNDS

A combination of LCG funds including the Parks and Recreation funding, environmental grant funds and partnerships between LPSS (Paul Breau School), and BVD funding could support this project.



ECI CONCEPTUAL VISION

ACTION STEPS

STEP 1 : PARK CLEANUP

Begin cleanup of park area and staging various events that can ultimately lead to permanent installations and activity.

STEP 2 : PERFORM NECESSARY PRE-PLANNING

LCG to perform planning and internally coordinates necessary actions led by LCG departments.

STEP 3 : ENHANCED SECURITY PROGRAM

Create and implement an enhanced security program that includes lighting improvements for a safer park experience.

STEP 4 : SELECT DESIGN TEAM

LCG and/or private groups select design team to perform any necessary conceptual and technical work. Depending on the scale of the work required, this could be the result of a design completion, private hire, or official RFQ.

STEP 5 : DESIGN WORKSHOP

To create community support, host a design workshop to co-create the project and finalize the design concept.

STEP 6 : SECURE FUNDING

Seek and secure funding for implementing various parts of the project strategy. Essential infrastructure and streetscape improvements can be funded through LCG budgetary funds, while other design elements could be funded privately or through local crowdfunding efforts led by BVD.

STEP 7 : BEGIN CONSTRUCTION

After funding is in place, begin incremental construction phases.

STEP 8 : MAINTENANCE PLAN

Host events to unveil newly transformed park development. Keep momentum going and formulate plans for sustained use through shared events and maintenance.

DRAFT March 3, 2018 3:50 PM

IMPLEMENTATION STRATEGY

Gives insight into who is responsible for the ultimate implementation for each project. This allows members of the community to know who to go to and advocate for the project and how to get involved.

ACTION STEPS

A detailed step-by-step guide for each Catalyst Project, from initial concept to implementation – including who to approach, how to get started, and when and how to seek funding.

BEST PRACTICE EXAMPLES



Bowen Place Crossing (Australia)



Lady Bird Lake Hike and Bike Trail (Austin, TX)

BEST PRACTICE EXAMPLES

Example case study of a similarly successful implemented project.

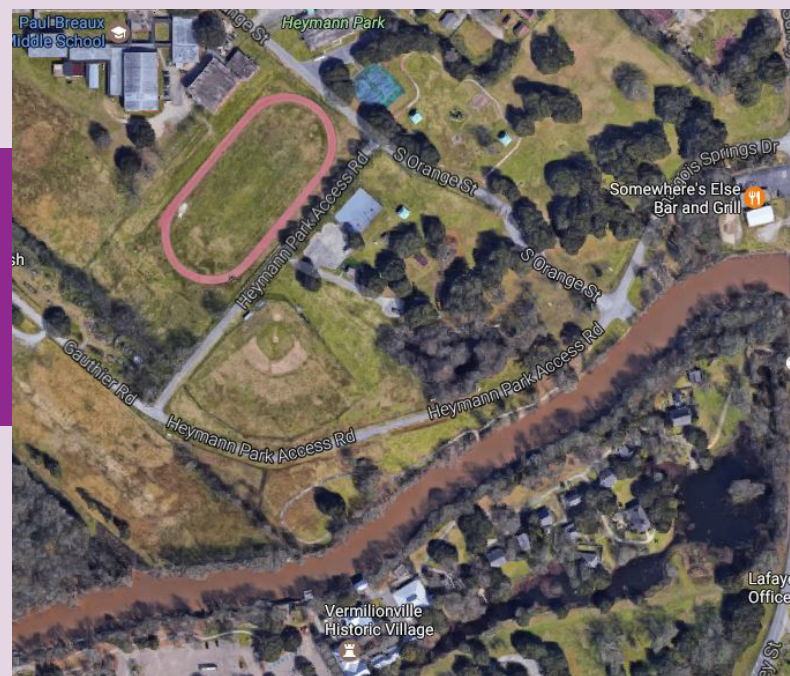
20

04 FEATURED CATALYST PROJECT 1

Heymann Park

Catalyst Project A

LANDSCAPE REDEVELOPMENT & SPACE IMPROVEMENTS



Residents and park patrons say they enjoy using the park, but also pointed out key concerns and issues such as isolated spaces, safety issues and substandard lighting.

RECOMMENDATIONS

Park retrofit strategy including space consolidation, landscape designs, and new lighting that enhances recreational experiences and provides better connection to the Vermilion River.

COMMUNITY BENEFITS

This project promotes:

- Redevelopment/reuse of existing sites
- Neighborhood connections
- Neighborhood beautification
- Community identity/interaction

ECI CONCEPTUAL VISION



- 20
- 1 New children's play area
 - 2 Observation Tower
 - 3 Multi-use path / river access
 - 4 Sports courts
 - 5 Education Garden



ECI CONCEPTUAL VISION

IMPLEMENTATION STRATEGY

WHO LEADS

Various LCG departments including the Parks and Recreation will spearhead this project with technical oversight from Department of Public Works.

WHO COLLABORATES

Bayou Vermilion District will be a primary collaborator along with local residents who have vested interest in the park transformation. Other local organizations and groups could initiate temporary activity on site.

WHO FUNDS

A combination of LCG funds including the Parks and Recreation funding, environmental grant funds and partnerships between LPSS (Paul Breaux School), and BVD funding could support this project.

ACTION STEPS

STEP 1 : PARK CLEANUP

Begin cleanup of park area and staging various events that can ultimately lead to permanent installations and activity.

STEP 2 : PERFORM NECESSARY PRE-PLANNING

LCG to perform planning and internally coordinates necessary actions led by LCG departments.

STEP 3 : ENHANCED SECURITY PROGRAM

Create and implement an enhanced security program that includes lighting improvements for a safer park experience.

STEP 4 : SELECT DESIGN TEAM

LCG and/or private groups select design team to perform any necessary conceptual and technical work. Depending on the scale of the work required, this could be the result of a design completion, private hire, or official RFQ.

STEP 5 : DESIGN WORKSHOP

To create community support, host a design workshop to co-create the project and finalize the design concept.

STEP 6 : SECURE FUNDING

Seek and secure funding for implementing various parts of the project strategy. Essential infrastructure and streetscape improvements can be funded through LCG budgetary funds, while other design elements could be funded privately or through local crowdfunding efforts led by BVD.

STEP 7 : BEGIN CONSTRUCTION

After funding is in place, begin incremental construction phases.

STEP 8 : MAINTENANCE PLAN

Host events to unveil newly transformed park development. Keep momentum going and formulate plans for sustained use through shared events and maintenance.

BEST PRACTICE EXAMPLES



Bowen Place Crossing (Australia)



Lady Bird Lake Hike and Bike Trail (Austin, TX)

04 FEATURED CATALYST PROJECT 2

Pedestrian River Crossing from Heymann Park to Vermilionville

Catalyst Project E

CONNECTING HEYMANN PARK TO VERMILIONVILLE



Residents, Heymann Park visitors, and Vermilionville staff and visitors expressed strong interest to improve connectivity between the Park and Vermilionville.

RECOMMENDATIONS

Complementing the Park retrofit strategy, a pedestrian bridge crossing from Heymann Park to Vermilionville would increase shared activity and connection in this recreation/tourist zone along the river.

COMMUNITY BENEFITS

This project promotes:

- Redevelopment/reuse of existing sites
- Neighborhood connections
- Neighborhood beautification
- Community identity/interaction



ECI CONCEPTUAL VISION
22

RIVER WALK PROMENADE
WITH SMALL SCALE COMMERCIAL
ACTIVITY AND AMENITIES

UPDATED HEYMANN PARK GREAT
LAWN WITH ACTIVITY AREAS, NEW
WALKING PATHS, AND LIGHTING

ECI CONCEPTUAL VISION



IMPLEMENTATION STRATEGY

WHO LEADS

The Development and Planning Department and Parks and Recreation will spearhead this project with technical oversight from Department of Public Works.

WHO COLLABORATES

Bayou Vermilion District and Vermilionville will be a primary collaborator along with local residents who have vested interest in park activities.

WHO FUNDS

A combination of LCG funds including the Parks and Recreation funding, environmental grant funds and partnerships between LCG and BVD could support this project.

ACTION STEPS

STEP 1 : COMBINE PROJECT WITH PARK RETROFIT

Begin cleanup of park area and staging various events that can ultimately lead to permanent installations and activity.

STEP 2 : PERFORM NECESSARY PRE-PLANNING

LCG and BVD to perform planning and internally coordinate necessary actions led by LCG departments.

STEP 3 : ANNOUNCE DESIGN COMPETITION / RFP

Initiate a national open call for design ideas. Through a committee and public input, select design team to execute the project.

STEP 4 : BUILD COMMUNITY SUPPORT

Host a series of events and workshops on-site to stir up community interest and support that could later be leveraged in a crowdfunding campaign.

STEP 5 : SECURE FUNDING

Seek and secure funding for implementing the pedestrian bridge. Essential infrastructure can be funded through LCG budgetary funds, while other design elements could be funded privately or through local crowdfunding efforts led by BVD.

STEP 6 : BEGIN CONSTRUCTION

After funding is in place, construction phase (some elements may be executed off site).

STEP 7 : MAINTENANCE PLAN

Host events to unveil new pedestrian bridge. Keep momentum going and formulate plans for sustained use through shared events that focus on the river and provide maintenance plans and responsibilities for ensuring safety.

BEST PRACTICE EXAMPLES



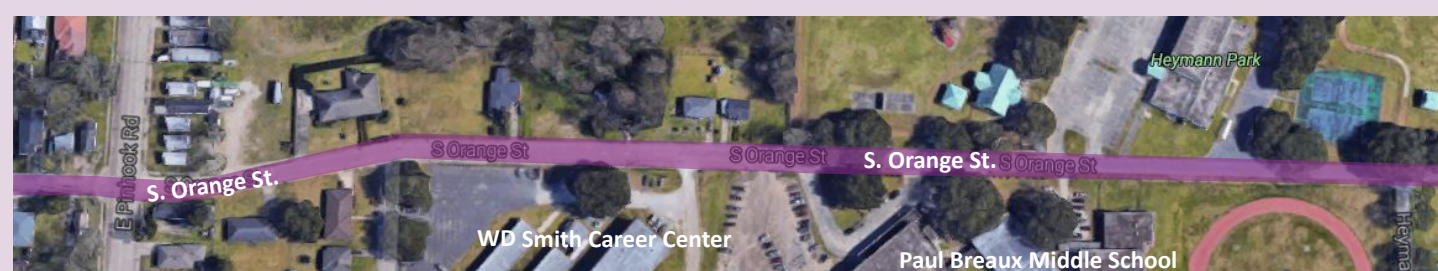
04 FEATURED CATALYST PROJECT 3

South Orange Street Neighborhood Gateway/Streetscape Enhancement

Catalyst Project D

NEIGHBORHOOD GATEWAY AND STREETScape ENHANCEMENTS

Residents and park patrons say they enjoy using the park, but also pointed out key concerns and issues such as isolated spaces, safety issues and substandard lighting.



RECOMMENDATIONS

Neighborhood gateway/streetscape design project along South Orange Street. Defines primary artery from McComb-Veazey to the Vermilion River Recreational District - improves access to Paul Breaux Middle School and Heymann Park from East Pinhook Road.

COMMUNITY BENEFITS

This project promotes:

- Redevelopment/reuse of existing sites
- Business Development / Economic Growth
- Neighborhood connections
- Neighborhood beautification
- Community identity/interaction



IMPLEMENTATION STRATEGY

WHO LEADS

LCG Development and Planning Department will spearhead this project with technical oversight from Department of Public Works and LUS.

WHO COLLABORATES

Bayou Vermilion District will be a primary collaborator along with local residents who have vested interest. Paul Breaux Middle School and the WD Smith Career Center could serve as partners of interest.

WHO FUNDS

The majority of funds will come from LCG budget for street improvements. Additional funding could come from grants and partnership agreements with Paul Breaux School (LPSS), WD Smith Center, LPSS and BVD.

ACTION STEPS

STEP 1 : STREET CLEANUP

Begin cleanup of street and perform study of potential.

STEP 2 : PERFORM NECESSARY PRE-PLANNING

LCG to perform planning and internally coordinates necessary actions led by LCG departments.

STEP 3 : HOST A BETTER BLOCK SOUTH ORANGE

Create an event to capture the connection between McComb-Veazey and the BVD area. Concentrate activities at the gateway.

STEP 4 : IMPLEMENT A GATEWAY SIGN

To signal a defining gateway, erect signage that calls attention to S. Orange and the connection to Heymann Park. Locate Gateway Signage at Pinhook Rd.

STEP 5 : FUNDING FOR STREETScape IMPROVEMENTS

Seek and secure funding for implementing various parts of the streetscape strategy. Essential infrastructure and streetscape improvements can be funded through LCG budgetary funds, while other design elements could be funded privately or through local crowdfunding efforts led by BVD.

STEP 6 : BEGIN CONSTRUCTION

After funding is in place, begin incremental construction phases of streetscape improvements.

STEP 7 : MAINTENANCE PLAN

Host events to unveil newly transformed streets. Keep momentum going and formulate plans for sustained use through shared events and maintenance.

STEP 8 : PROMOTE INFILL DEVELOPMENT

Once streetscape improvements are complete, consider and promote infill housing and small commercial development to enhance the urban character and activity along S. Orange.

VISION POTENTIAL

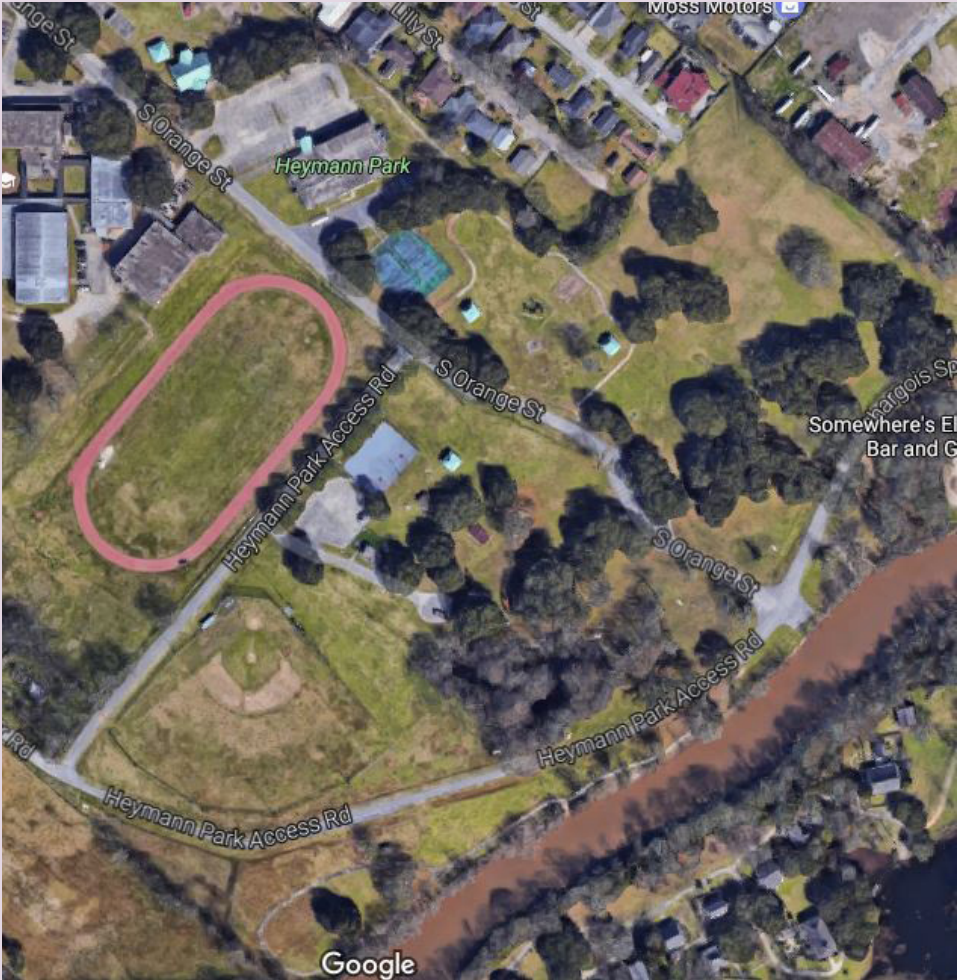


BEST PRACTICE EXAMPLES



04 ADDITIONAL CATALYST PROJECTS

Wayfinding and Historic Identity Mapping Campaign
Catalyst Project B



Community members, city officials, and Bayou Vermilion District staff want to promote the area’s assets and history more aggressively.

Wayfinding and Identity Campaign project proposes a physical narrative across the Recreational District through sculptural signage, identification, and map kiosks

Redevelopment / Reuse of Existing Site	Business Development / Economic Growth	Neighborhood Connections	Neighborhood Beautification	Community Identity / Interaction
	X	X	X	X



Timeline
Short-term: Develop new trail brochures + graphic maps to distribute at community events + online awareness campaign hosted by BVD (Vermilionville)
Long-term: Comprehensive wayfinding and identity signage/kiosk design and implementation



Funding Support / Cost Estimates
• Printed material/digital campaign - LCG support \$
• Installation - partnership between LCG and Bayou Vermilion District (operates Vermilionville) \$\$



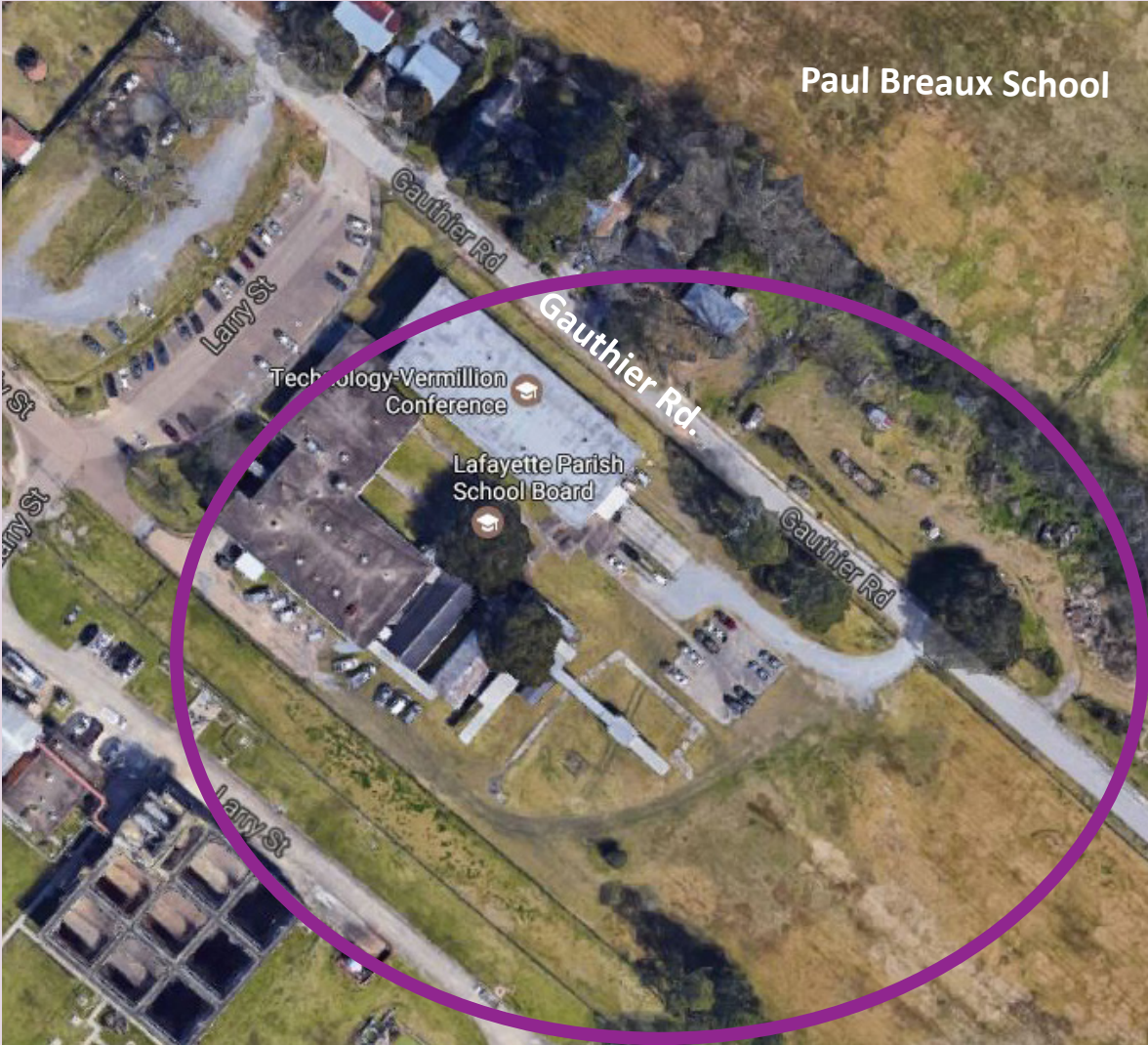
Economic Impact / Community Benefits
• Draw awareness to the BVD - expand cultural tourism, economic value, and development potential
• Community receives better information and guidance in the physical environment
• Create interaction, address safety, and support cultural preservation/education



04 ADDITIONAL CATALYST PROJECTS

Community Farm at Vermilion Conference Center

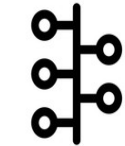
Catalyst Project C



Residents in McComb-Veazey and within the BVD expressed interest in a community farm near the Lafayette Parish School System’s Conference Center.

A community farm near the Conference Center and Heymann Park to enhance a public service offering and establish a neighborhood amenity to promote healthy local living and educational activities

Redevelopment / Reuse of Existing Site	Business Development / Economic Growth	Neighborhood Connections	Neighborhood Beautification	Community Identity / Interaction
X	X		X	X



Timeline

Short-term: Site clean up + staging of various food-related events that indicate permanent installations
Long-term: Preparing landscape for farming activities - planting and harvesting - building structures



Funding Support / Cost Estimates

- Maintenance clean up and kick-off events - LCG-Parks Department \$
- Overall site work - landscaping and construction - environmental grant funds and partnerships between LCG, LPSS, and BVD \$\$\$



Economic Impact / Community Benefits

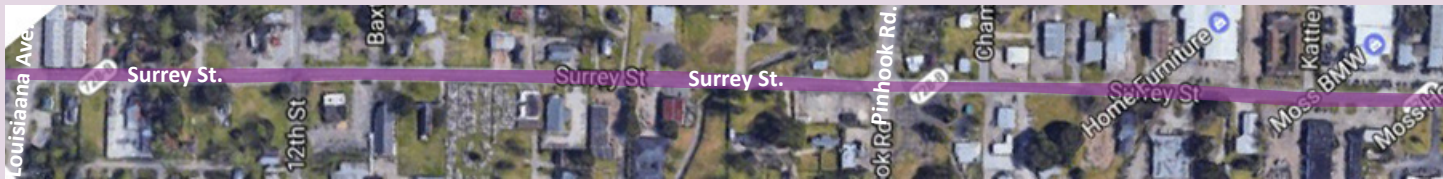
- Leverage awareness of community and city-wide asset in the neighborhood near Heymann Park
- Farm amenity will drive locals and visitors into the area, spur adjacent commercial development and services for park patrons, and increase economic return on investment
- Communities receive enhanced public amenity that promotes access to healthy living and education



04 ADDITIONAL CATALYST PROJECTS

Surrey Street: Spot Improvements

Catalyst Project F

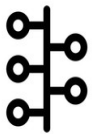


Residents of McComb-Veazey and the Bayou Vermilion District and city staff expressed a desire to have physical improvements along Surrey Street.

Strategic spot improvements including landscape features (such as bike trails) and infill construction in the Surrey Street corridor create a safer, walkable environment for residents and establish better connections between Louisiana Avenue, Pinhook Road and Heymann Park to spur economic investment



Redevelopment / Reuse of Existing Site	Business Development / Economic Growth	Neighborhood Connections	Neighborhood Beautification	Community Identity / Interaction
X	X	X	X	X



Timeline

- Short-term: Street clean up + Better Block events that indicate permanent installations/activity
- Medium-term: Street restriping, street trees, sidewalk repair and preliminary site prep for project infill
- Long-term: New landscape designs and infill construction (public spaces, commercial, and residential)



Funding Support / Cost Estimates

- Street clean up and kick-off events - LCG/Project Front Yard \$
- Restriping, small street-level repairs, and initial site prep - LCG-Public Works \$\$
- New, permanent landscape feature enhancements and infill construction - LCG/Private investment \$\$\$



Economic Impact / Community Benefits

- Enhance vital corridor through the McComb-Veazey and Vermilion River Recreational Districts to connect Pontiac Point to the river
- Improvements will drive visitors to the area, spur commercial development that will increase economic return on investment and provide residents with greater access to amenities and services
- Create a safer, more walkable street experience for the community (promote shared roadway)



04 ADDITIONAL CATALYST PROJECTS

East Pinhook Road: Spot Improvements

Catalyst Project G



Residents in the corridor showed interest in revamping areas along Pinhook to bolster opportunities for neighborhood connections and economic activity.

New landscape features, street work, and infill opportunities will enhance a major network thoroughfare in the Evangeline Corridor with connections to the city as a whole



Redevelopment / Reuse of Existing Site	Business Development / Economic Growth	Neighborhood Connections	Neighborhood Beautification	Community Identity / Interaction
X	X	X	X	X



Timeline

- Short-term: Street clean up + Better Block events that indicate permanent installations/activity
- Medium-term: Street restriping, street trees, sidewalk repair and preliminary site prep for project infill
- Long-term: New landscape designs and infill construction (public spaces, commercial, and residential)



Funding Support / Cost Estimates

- Street clean up and kick-off events - LCG-Project Front Yard \$
- Restriping, small street-level repairs, and initial site prep - LCG-Public Works \$\$
- New permanent landscape feature enhancements and infill construction - LCG/Private investment \$\$\$



Economic Impact / Community Benefits

- Enhance vital corridor that connects McComb-Veazey to downtown and beyond (Oil Center)
- Improvements will spur commercial development that will increase economic return on investment and provide residents with greater access to amenities and services
- Create a safer, more walkable street experience for the community (promote shared roadway)



05 YOUR DISTRICT'S FUTURE

COMMUNITY GUIDELINES AND GOALS

This Design Manual offers a road map for neighborhood revitalization. The keys to creating a successful Corridor are continued planning, communication and coordinated action. Improvements will have the most impact when they are carried out in concert with one another. See the ECI Final Report Chapter 5 for details on implementation processes to move concepts forward.

Promote greater connections between Heymann Park and other neighborhoods within the Evangeline Corridor. Enhance gateway access points along Pinhook Rd.

Continue to promote the history of the Vermilion Recreation District and leverage points of interest to activate programming and amenities.

Plan consistent community-driven programs that will consistently utilize Heymann Park and create demand for sustained upkeep and nighttime safety improvements.

Revitalize major and secondary neighborhood corridor streetscapes that offer local commerce while promoting multi-modal access and neighborhood safety.

Take advantage of active community nodes and enhance these areas with development infill that fulfills missing commercial and housing needs.

Target redevelopment of abandoned and unused sites that could serve as concentrations of new housing stock and community activity.

WHAT CAN I DO?...
MOBILIZE.
BRAINSTORM.
LOBBY FOR CHANGE.

COMMUNITY INFO RESOURCES

Lafayette Consolidated Government
705 West University Avenue
Lafayette, LA 70506
lafayettela.gov

Development and Planning Department
337.291.8000
Planning Division
337.291.8445

Department of Community Development
705 W. University Ave.
Lafayette, LA 70506
337.291.8400
lafayettela.gov

Downtown Development Authority
735 Jefferson Street, Suite 204
Lafayette, LA 70501
337.291-5566
developlafayette.com

Preservation Alliance of Lafayette
P.O. Box 2541
Lafayette, LA 70502
preservinglafayette.org

One Acadiana
804 E. St. Mary Blvd
Lafayette, LA 70503
337.233.2705
oneacadiana.org

Lafayette Economic Development Authority
211 E. Devalcourt St.
Lafayette, LA 70506
337.593.1400
lafayette.org

Vermilion River Recreational

