

*Environmental Quality  
LCG-Public Works  
Illicit Discharge  
Detection &  
Elimination*

**Illicit discharge** is defined by the EPA as:  
Any discharge into a municipal separate storm sewer that is not composed entirely of rain water and is not authorized by a permit.

**Potential Illicit Discharge Sources**

- \* Sanitary sewer wastewater
- \* Effluent from septic tanks
- \* Car wash waste waters
- \* Improper oil disposal
- \* Radiator flushing disposal
- \* Laundry wastewater
- \* Spills from roadway accidents
- \* Improper disposal of auto and household toxics

**Indications of Potential Illicit Discharge**

- Heavy flow in storm drain system during dry weather
- Strong odor
- Colorful or discolored liquid
- Evidence of dumping into waterway

**ENVIRONMENTAL QUALITY**

**CONTACT US:**

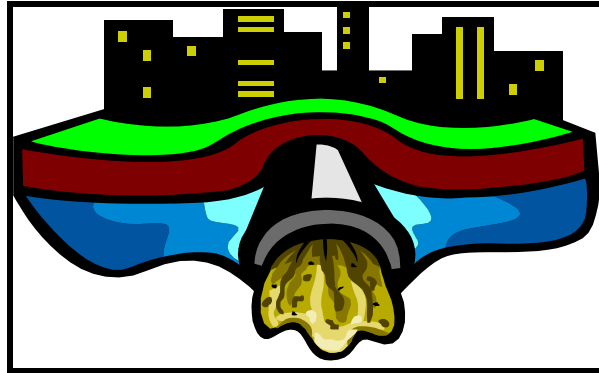
**Regulatory Compliance 337-291-8529**

**Code Enforcement 337-291-8518 or**

**on the internet [bforet@lafayettegov.net](mailto:bforet@lafayettegov.net)**

**Point source water pollution** is pollution from a single identifiable source such as a factory or refinery.

**Non point source water pollution** occurs when rainfall or irrigation water runs over lands, picks up pollutants and deposits them into waterways or groundwater



### Things to do around your home

- In your yard incorporate low maintenance native plants that will require less water, fertilizer and pesticides and therefore can reduce harmful runoff. Use only the amount of pesticide and fertilizer recommended.
- Wash your vehicle over a grassy area to prevent detergents from running off into storm drains.
- Do not put grass clippings, leaves and other yard waste into storm drain, swale, ditch or coulee.
- Properly dispose of hazardous materials including paints, antifreeze, other toxic chemicals and recycle used oil.

**Contact LCG Environmental Quality  
for more information at  
291-8529 or 291-8518**

**Ask us about our storm drain marking  
program for your group or troop!**

**REMEMBER ONLY STORM WATER  
SHOULD GO DOWN A STORMDRAIN!**

