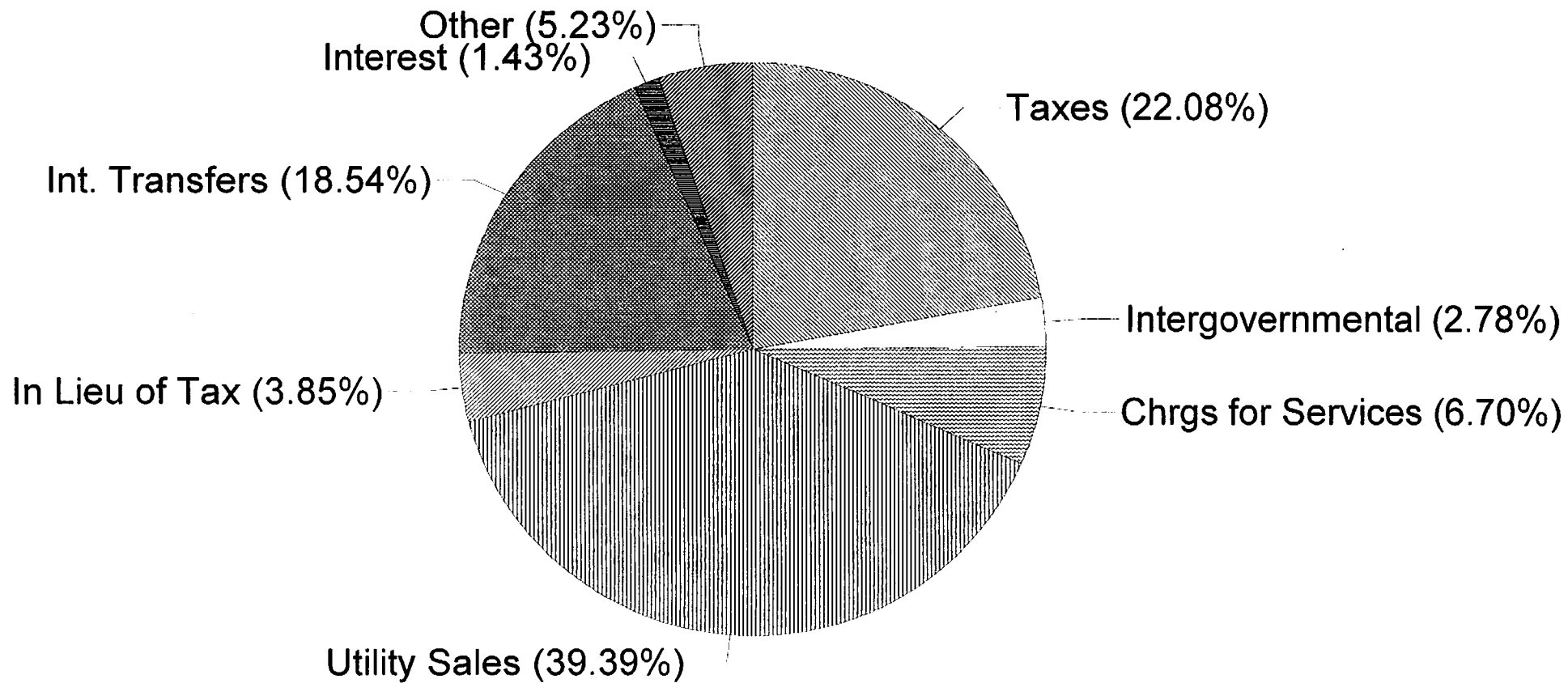
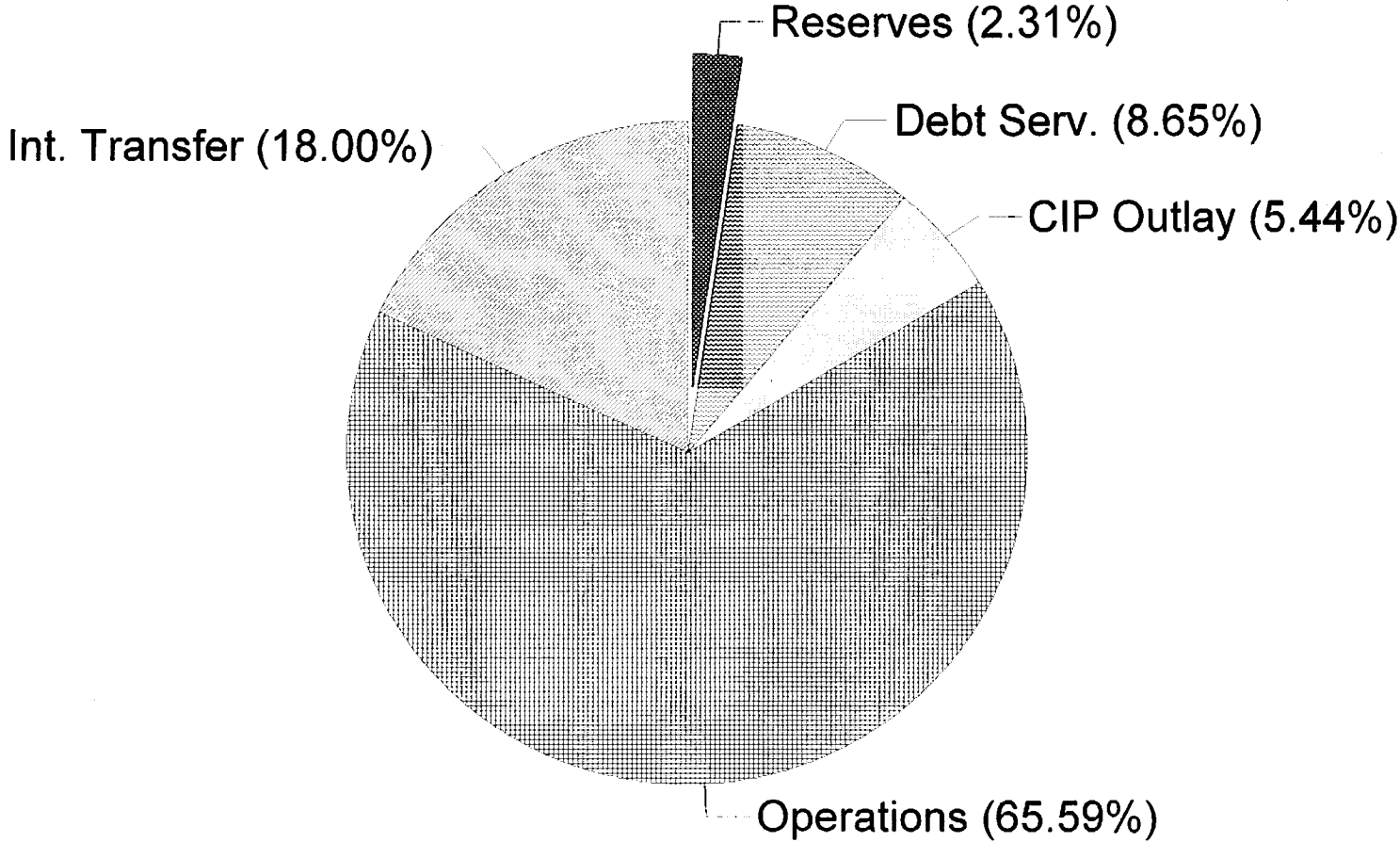


LAFAYETTE CONSOLIDATED GOVERNMENT 2003-04 TOTAL BUDGETED REVENUE



\$431,780,059

LAFAYETTE CONSOLIDATED GOVERNMENT 2003-04 TOTAL APPROPRIATIONS

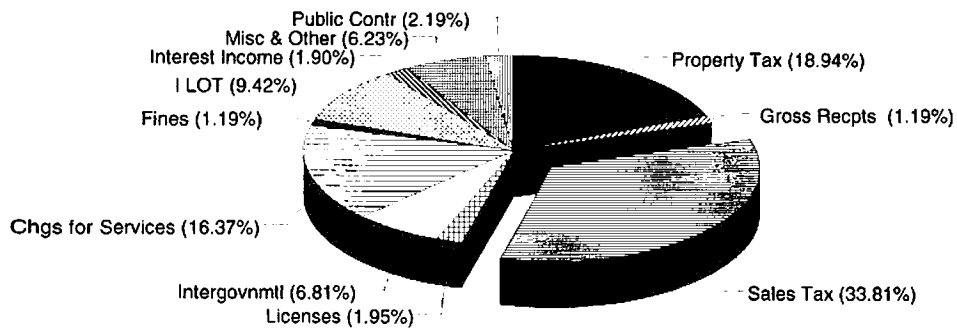


\$431,780,059

LCG GENERAL GOVERNMENT BUDGET

(EXCLUDES UTILITIES AND INTERNAL TRANSFERS)

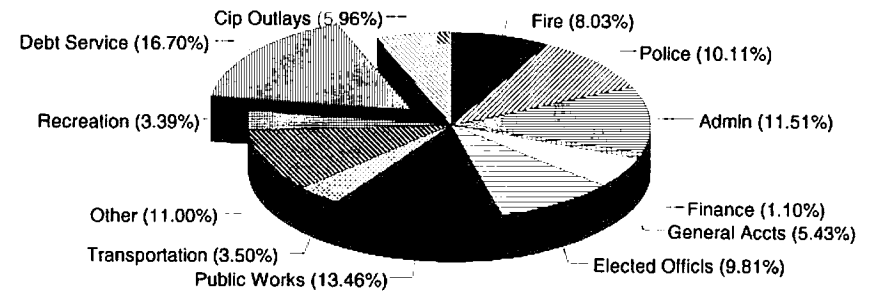
WHERE IT COMES FROM



GENERAL GOVERNMENT REVENUES

2003-04 BUDGET

WHERE IT GOES



GENERAL GOVERNMENT APPROPRIATIONS

2003-04 BUDGET

LAFAYETTE CONSOLIDATED GOVERNMENT
SUMMARY OF REVENUES BY SOURCE
FISCAL YEAR 2003-04 ADOPTED BUDGET

SOURCES OF REVENUES	TOTAL ESTIMATED REVENUES	LESS INTERFUND TRANSFERS	NET REVENUES ADOPTED	NON- RECURRING REVENUES	FY 03-04 RECURRING REVENUES
GENERAL PROPERTY TAXES	33,451,376		33,451,376		33,451,376
SALES TAX	59,709,037		59,709,037		59,709,037
GROSS RECEIPTS BUSINESS TAX	2,100,551		2,100,551		2,100,551
LICENSES & PERMITS	3,436,940		3,436,940		3,436,940
INTRGOVERNMENTAL REV. (FED, ST, LOCAL)	12,022,068		12,022,068	11,998,268	23,800
CHARGES FOR SERVICES	28,915,980		28,915,980		28,915,980
FINES & FORFEITS	2,097,680		2,097,680		2,097,680
INTEREST ON INVESTMENTS	3,356,853		3,356,853		3,356,853
CONTRIBUTION FROM PUBLIC ENTERPRISES	20,507,313		20,507,313	13,000	20,494,313
MISCELLANEOUS REVENUES	11,001,282		11,001,282	2,446,897	8,554,385
INTERFUND TRANSFERS	80,034,234	80,034,234	0		0
SUBTOTAL	256,633,314	80,034,234	176,599,080	14,458,165	162,140,915
UTILITIES SYSTEM	175,146,745		175,146,745	922,512	174,224,233
TOTAL	431,780,059	80,034,234	351,745,825	15,380,677	336,365,148

LAFAYETTE CONSOLIDATED GOVERNMENT
EXPENDITURES OF REVENUES BY DEPARTMENT
FISCAL YEAR 2003-04 ADOPTED BUDGET

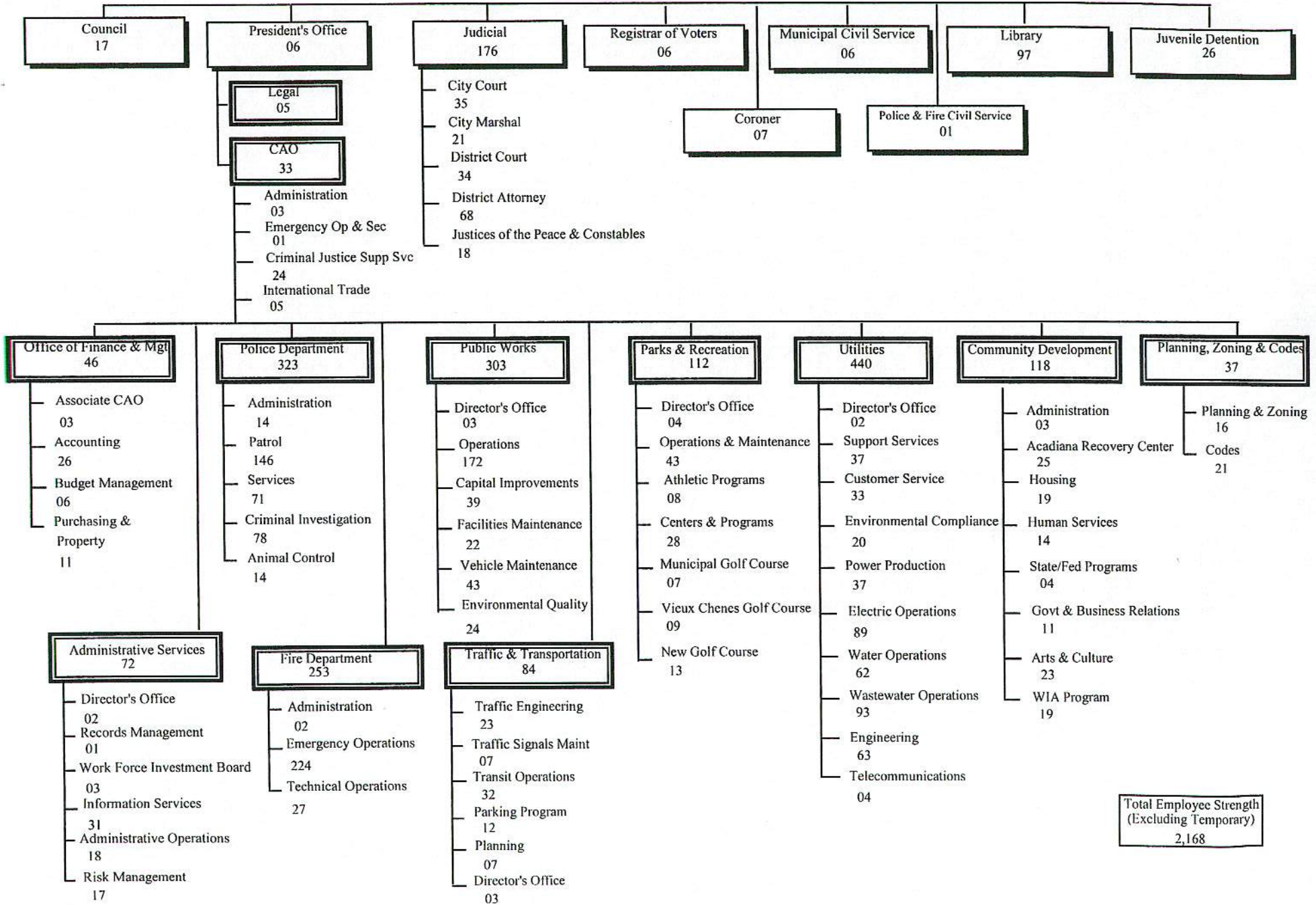
DEPARTMENT	TOTAL APPROPRIATION	LESS INTERFUND TRANSFERS	LESS CIP OUTLAYS	LESS DEBT SERVICE	LESS RESERVES	LESS GRANT PROGRAMS	LESS INTERNAL SERVICES	FY 03-04 NET OPERATIONS
FINANCE	1,971,996		6,000					1,965,996
GENERAL ACCOUNTS	117,961,262	77,467,276	898,900	29,886,512	3,689,984			6,018,590
ELECTED OFFICIALS & RELATED OFFICES	17,056,929		407,256		1,676,645	559,500	12,100	14,401,428
LEGAL	895,736							895,736
ADMINISTRATION	21,660,119		1,059,298		3,734,918	226,612	13,517,965	3,121,326
POLICE	18,100,495		20,100		20,697	34,045		18,025,653
FIRE	14,565,615		202,100					14,363,515
PUBLIC WORKS	27,227,085		3,143,530				3,949,533	20,134,022
TRAFFIC & TRANSPORTATION	8,256,305	120,863	1,878,077			1,315,011		4,942,354
PARKS & RECREATION	8,963,805		2,892,000					6,071,805
COMMUNITY DEVELOPMENT	11,693,774	133,450	137,307		345,160	6,241,298		4,836,559
PLANNING, ZONING & CODES	1,835,635		14,700					1,820,935
OTHERS	6,444,558		6,517		5,000	115,000		6,318,041
SUBTOTAL	256,633,314	77,721,589	10,665,785	29,886,512	9,472,404	8,491,466	17,479,598	102,915,960
UTILITIES SYSTEM	175,146,745		12,832,806	7,479,782	500,000			154,334,157
TOTAL	431,780,059	77,721,589	23,498,591	37,366,294	9,972,404	8,491,466	17,479,598	257,250,117

NOTE: DIFFERENCE IN INTERFUND TRANSFERS IS TRANSFERS FROM NON-OPERATING FUNDS NOT SHOWN IN BUDGET.

PERSONNEL STRENGTH RECAP

NAME OF DEPARTMENT	AUTHORIZED AS OF 07/23/03	ADDITIONAL AUTHORIZATION	APPROVED AUTHORIZATION FOR 2003-04
FINANCE	45	1	46
ELECTED OFFICIALS & RELATED OFFICES	247	3	250
ADMINISTRATIVE SERVICES	71	1	72
POLICE	323	0	323
FIRE	253	0	253
PUBLIC WORKS	305	-2	303
TRAFFIC & TRANSPORTATION	84	0	84
PARKS & RECREATION	99	13	112
UTILITIES	438	2	440
COMMUNITY DEVELOPMENT	118	0	118
PLANNING, ZONING & CODES	37	0	37
OTHERS	121	9	130
TOTALS	2,141	27	2,168

LAFAYETTE CONSOLIDATED GOVERNMENT



Total Employee Strength
(Excluding Temporary)
2,168