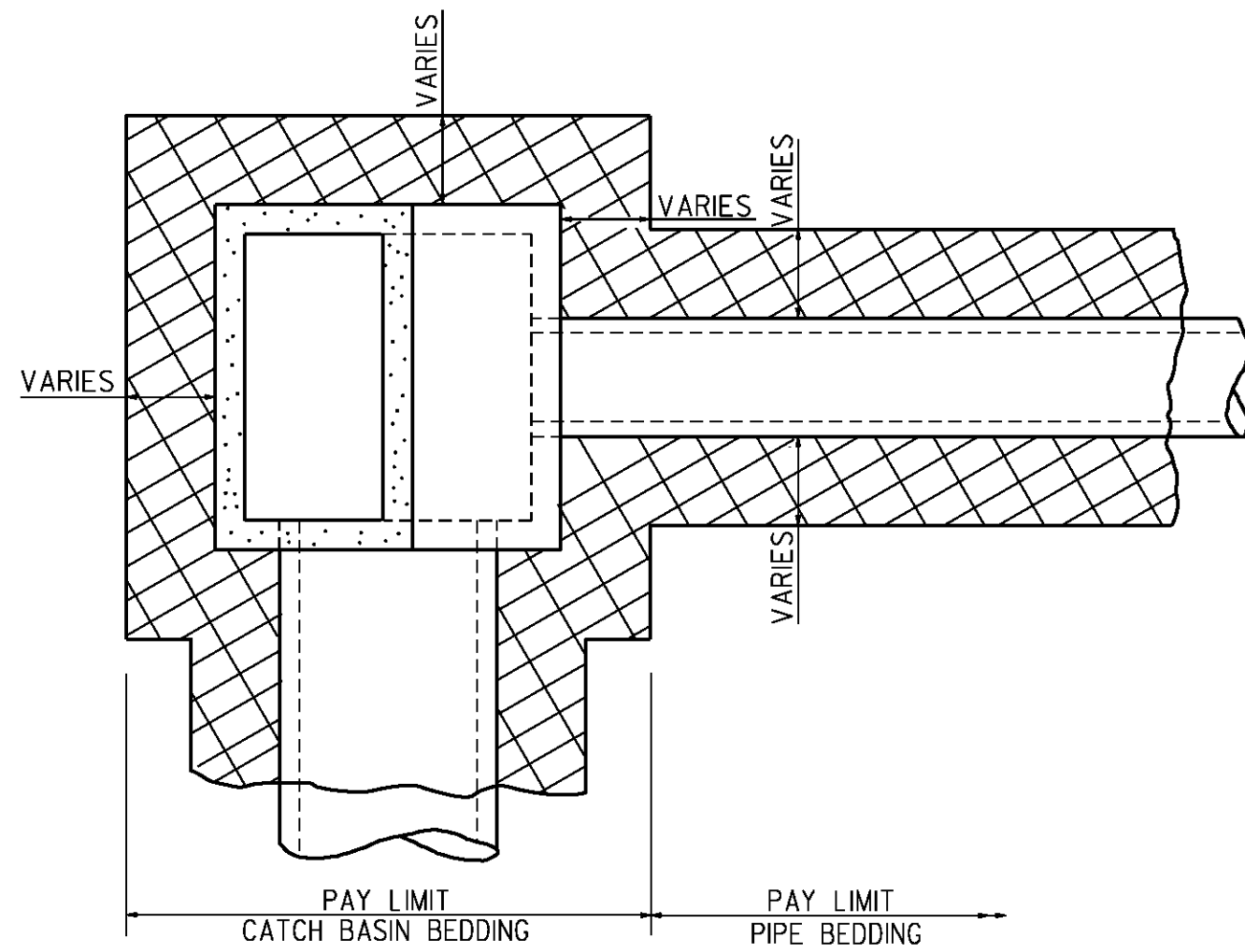
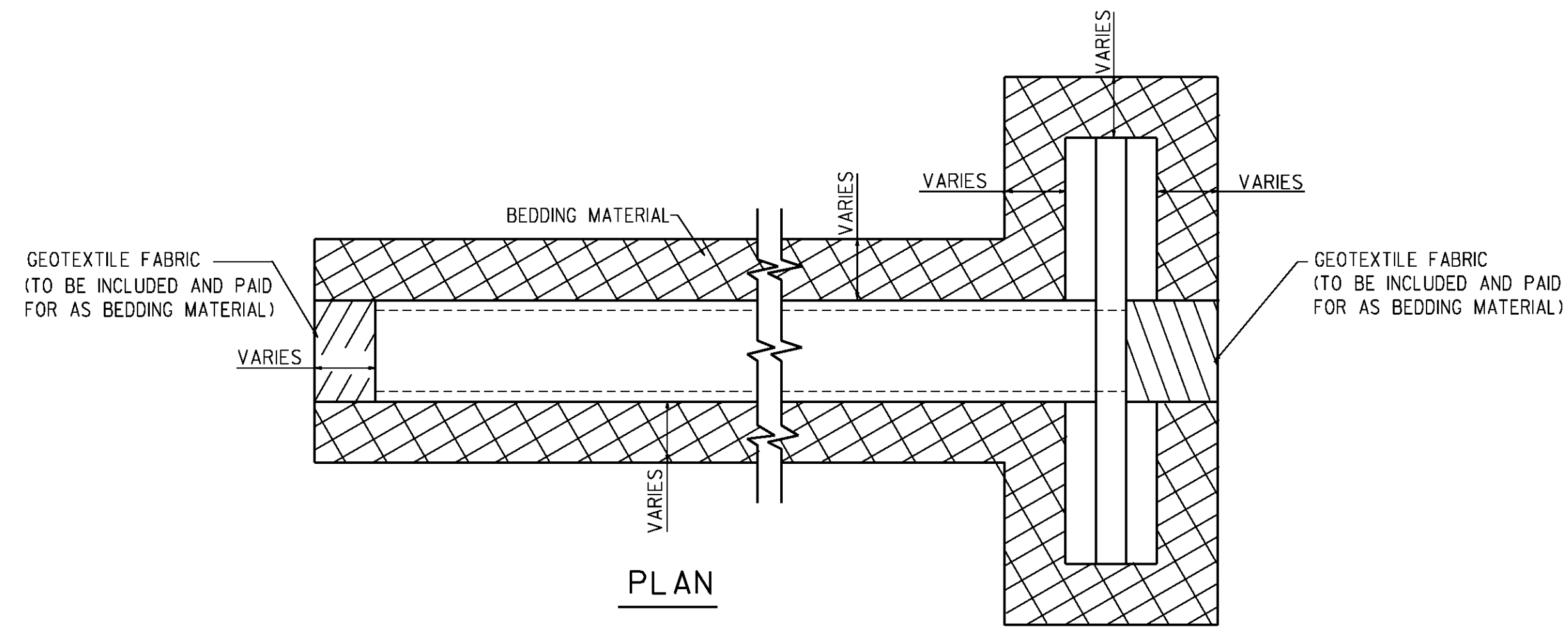


TYPICAL CATCH BASIN AND STORM DRAIN PIPE INSTALLATION WITH BEDDING MATERIAL



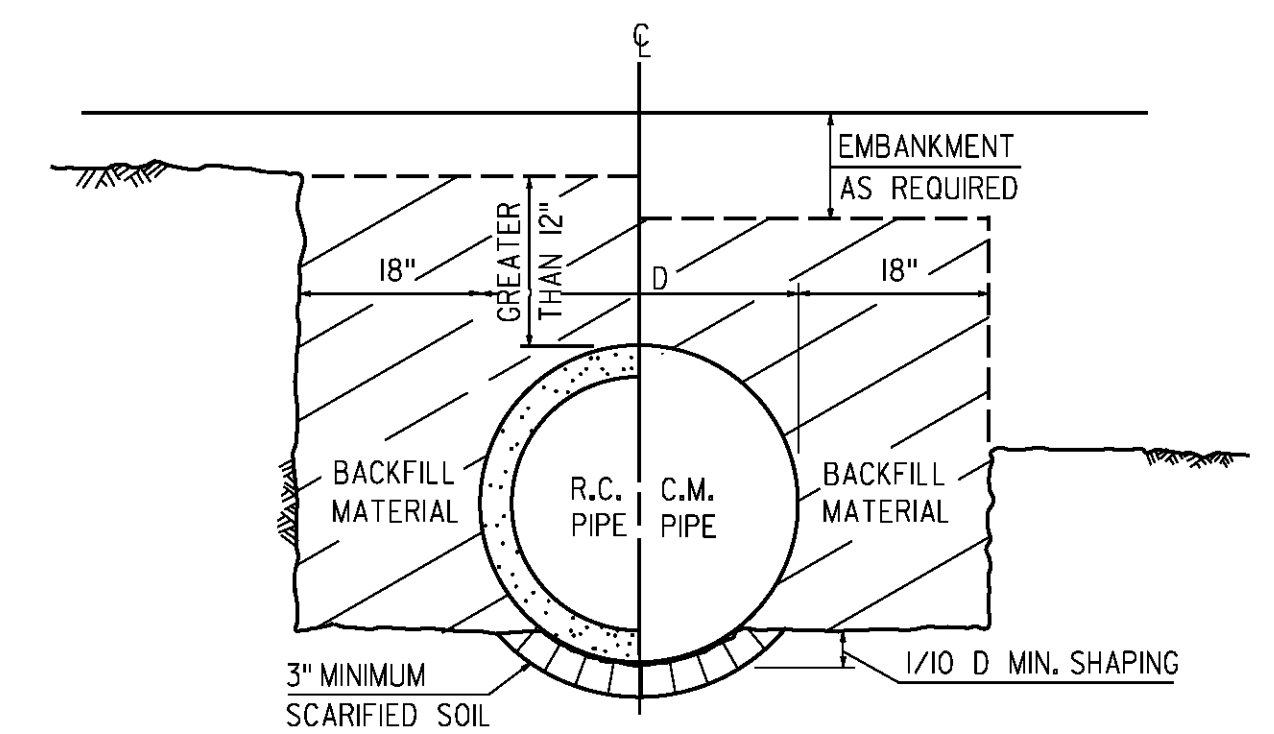
PLAN OF TYPICAL CATCH BASIN (MANHOLE OR JUNCTION BOX) AND PIPE

TYPICAL CROSS DRAIN INSTALLATION WITH BEDDING MATERIAL



PLAN

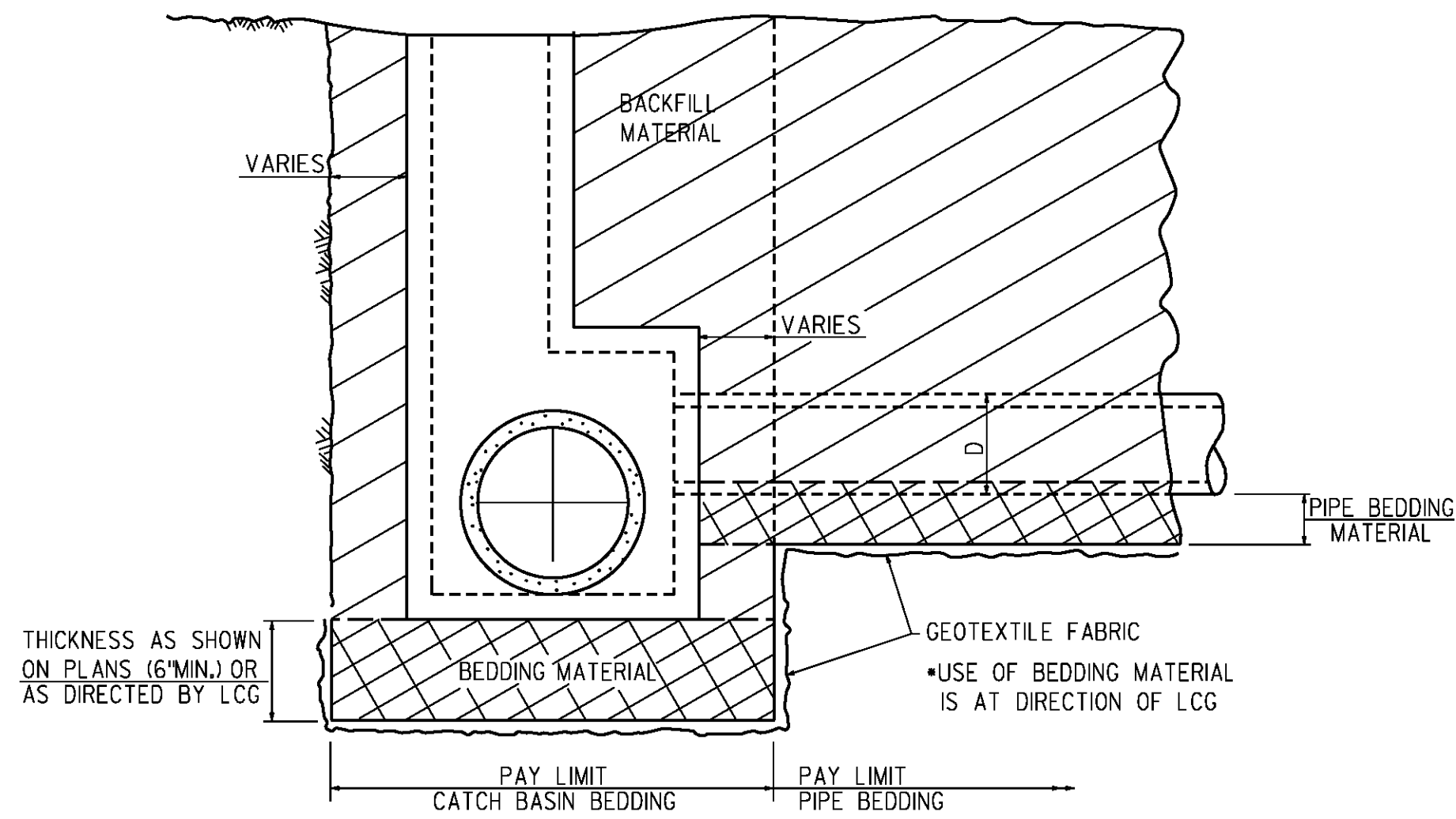
TYPICAL PIPE INSTALLATION WITHOUT BEDDING MATERIAL



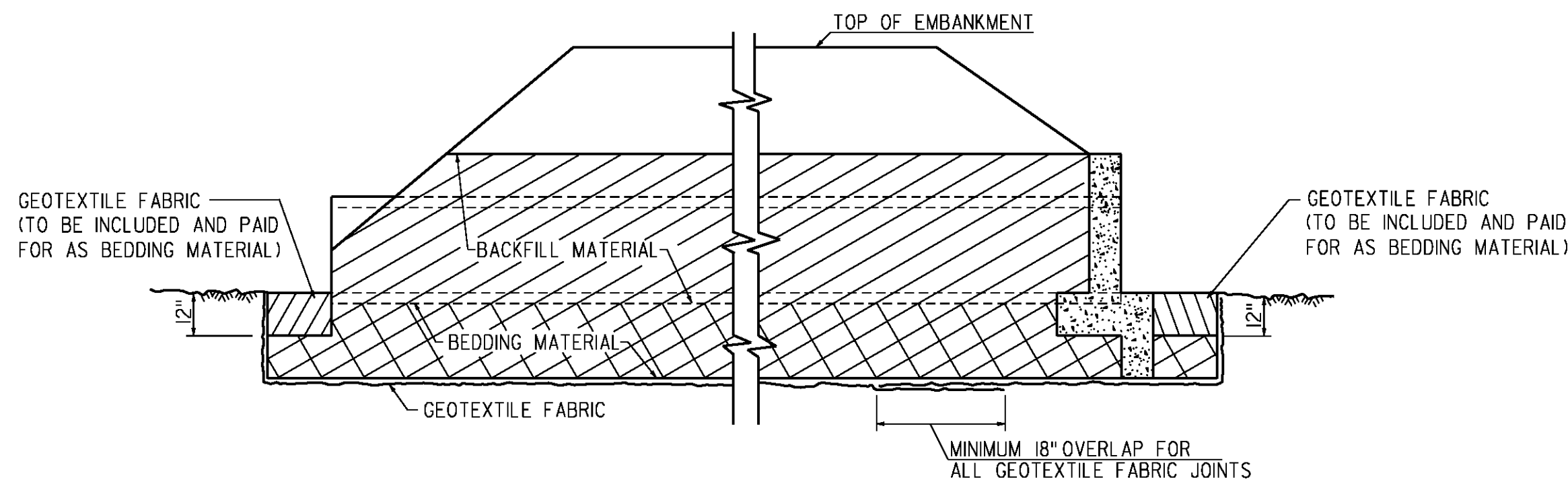
SECTION THRU TRENCH

HALF-SECTION SHOWING TOP OF PIPE GREATER THAN 12" BELOW ORIGINAL GROUND (TRENCH INSTALLATION)  
 HALF-SECTION SHOWING TOP OF PIPE ABOVE ORIGINAL GROUND (EMBANKMENT INSTALLATION)

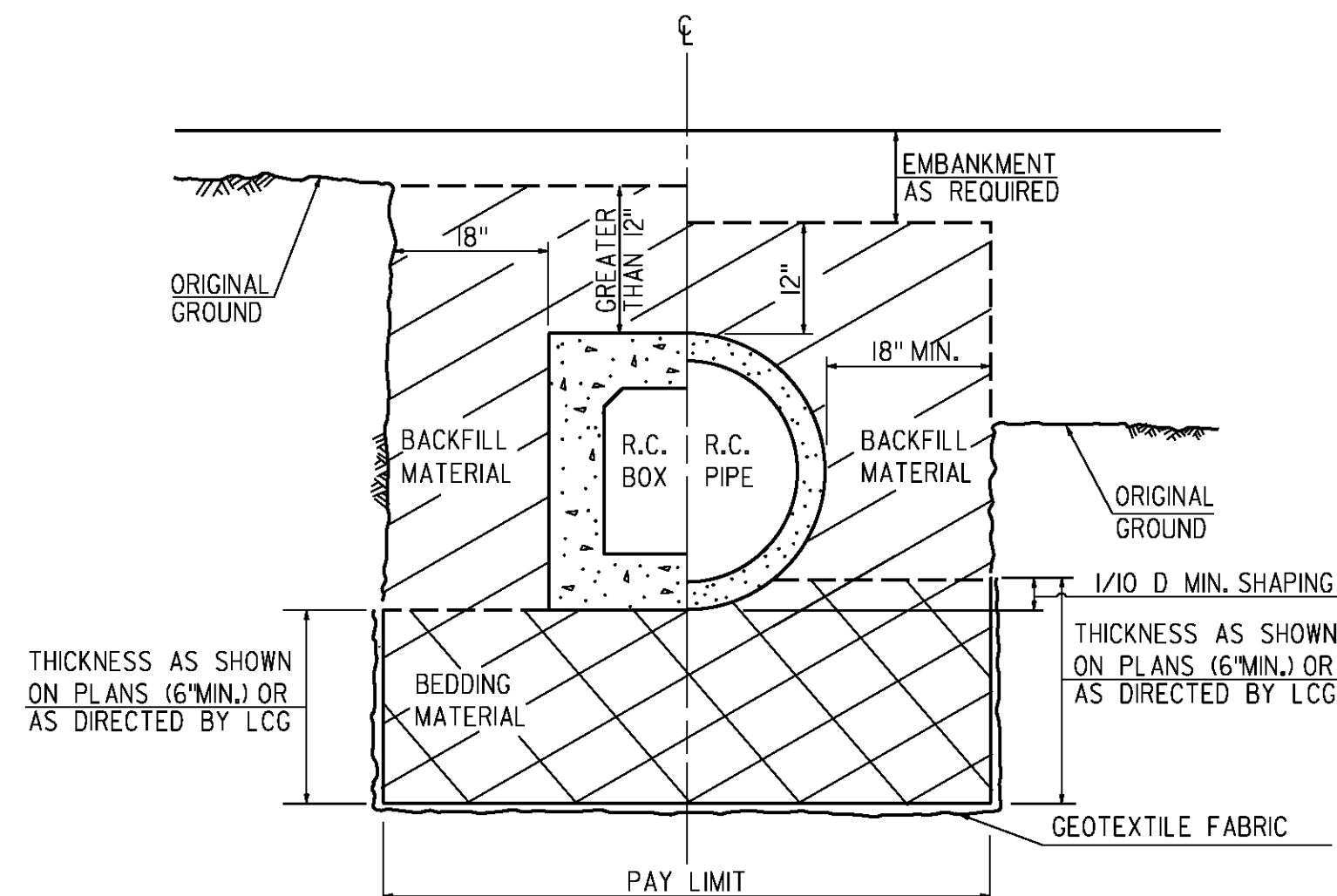
- STANDARD LAFAYETTE CONSOLIDATED GOVERNMENT PIPE INSTALLATION, BEDDING, AND BACKFILL ARE DEFINED IN LAFAYETTE CONSOLIDATED GOVERNMENT STANDARD SPECIFICATIONS.
- THE NEED AND/OR THE THICKNESS OF BEDDING MATERIAL WILL BE DETERMINED BY THE GEOTECHNICAL SECTION AND WILL BE SHOWN ON THE PLANS. ADDITIONAL BEDDING MATERIAL MAY BE REQUIRED BY THE ENGINEER/OWNER.
- THE DETAILS ON THIS SHEET DEPICT PAY LIMITS FOR BEDDING MATERIALS. THE BEDDING MATERIAL PAY QUANTITIES ARE TO BE BASED ON THE THEORETICAL NET SECTION WITH NO PIPE DEDUCTIONS. FULL PIPE DEDUCTIONS (SEE TABLES ON THIS SHEET) FOR BACKFILL QUANTITIES ARE FOR INFORMATIONAL PURPOSES ONLY. THE COST OF THE BACKFILL IS TO BE INCLUDED IN THE COST OF THE HYDRAULIC STRUCTURE WHEN USING IN-SITU SOILS ONLY.
- REINFORCED CONCRETE PIPE, REINFORCED CONCRETE BOX AND CORRUGATED METAL PIPE ARE SHOWN AS TYPICAL STRUCTURES, DETAILS FOR REINFORCED CONCRETE PIPE ARCH, CORRUGATED METAL PIPE ARCH, AND CORRUGATED STRUCTURAL PLATE STRUCTURES ARE SIMILAR.
- PLASTIC FILTER CLOTH SHALL BE REQUIRED WHEN BEDDING MATERIAL IS REQUIRED AND SHALL BE PLACED IN ACCORDANCE WITH DETAILS PRIOR TO PLACING BEDDING MATERIAL. ADJACENT STRIPS OF FILTER CLOTH SHALL LAP EACH OTHER FOR AT LEAST 3 FEET. PLASTIC FILTER CLOTH WILL NOT BE MEASURED FOR PAYMENT.
- BEDDING SHOWN ON THIS STANDARD PLAN CONFORMS TO THE REQUIREMENTS OF SECTION 726 OF THE LAFAYETTE CONSOLIDATED GOVERNMENT STANDARD SPECIFICATIONS.



PROFILE OF TYPICAL CATCH BASIN (MANHOLE OR JUNCTION BOX) AND PIPE



PROFILE



SECTION THRU TRENCH

HALF-SECTION SHOWING TOP OF BOX GREATER THAN 12" BELOW ORIGINAL GROUND (TRENCH INSTALLATION)  
 HALF-SECTION SHOWING TOP OF PIPE ABOVE ORIGINAL GROUND (EMBANKMENT INSTALLATION)

DEDUCTION FROM BACKFILL QUANTITY

PIPE DIAMETER	R.C. PIPE CU.YDS./LIN.FT.	C.M. PIPE CU.YDS./LIN.FT.
15"	0.0768	0.0455
18"	0.1068	0.0654
24"	0.1818	0.1164
30"	0.2765	0.1818
36"	0.3910	0.2618
42"	0.5254	0.3563
48"	0.6795	0.4654
54"	0.8534	0.5890
60"	1.0471	0.7272
72"	1.4940	1.0472
84"	2.0200	1.4253
96"	2.6252	1.8617
108"	3.3096	2.3562
120"	3.9593	2.9089
132"	4.7908	3.5197
144"	5.7014	4.1888

DEDUCTION FROM BACKFILL QUANTITY

R.C. PIPE ARCH		C.M. PIPE ARCH	
EQUIV. DIAM.	CU.YDS./LIN.FT.	EQUIV. DIAM.	CU.YDS./LIN.FT.
18"	0.0979	18"	0.0593
24"	0.1615	24"	0.1037
30"	0.2495	30"	0.1630
36"	0.3488	36"	0.2370
42"	0.4742	42"	0.3222
48"	0.6171	48"	0.4222
54"	0.7654	54"	0.5296
60"	0.9526	60"	0.6519
72"	1.3599	72"	0.9630
84"	1.8302	84"	1.2963
96"	2.6655	96"	1.7037
108"	3.3170	108"	2.1481

FOR INFORMATIONAL PURPOSES ONLY. THE COST OF THE BACKFILL IS TO BE INCLUDED IN THE COST OF THE HYDRAULIC STRUCTURE FOR USE OF IN-SITU SOILS ONLY.

TYPE "A" OR "B" BACKFILL IS PAID FOR AS BORROW AS APPROVED BY THE ENGINEER.

USE OF BEDDING MATERIAL WITH PLASTIC FILTER CLOTH IS AT DIRECTION OF LCC.

FEBRUARY 2013

BEDDING AND BACKFILL FOR DRAINAGE STRUCTURES  
 1 OF 2

BM-01

SHEET

OF