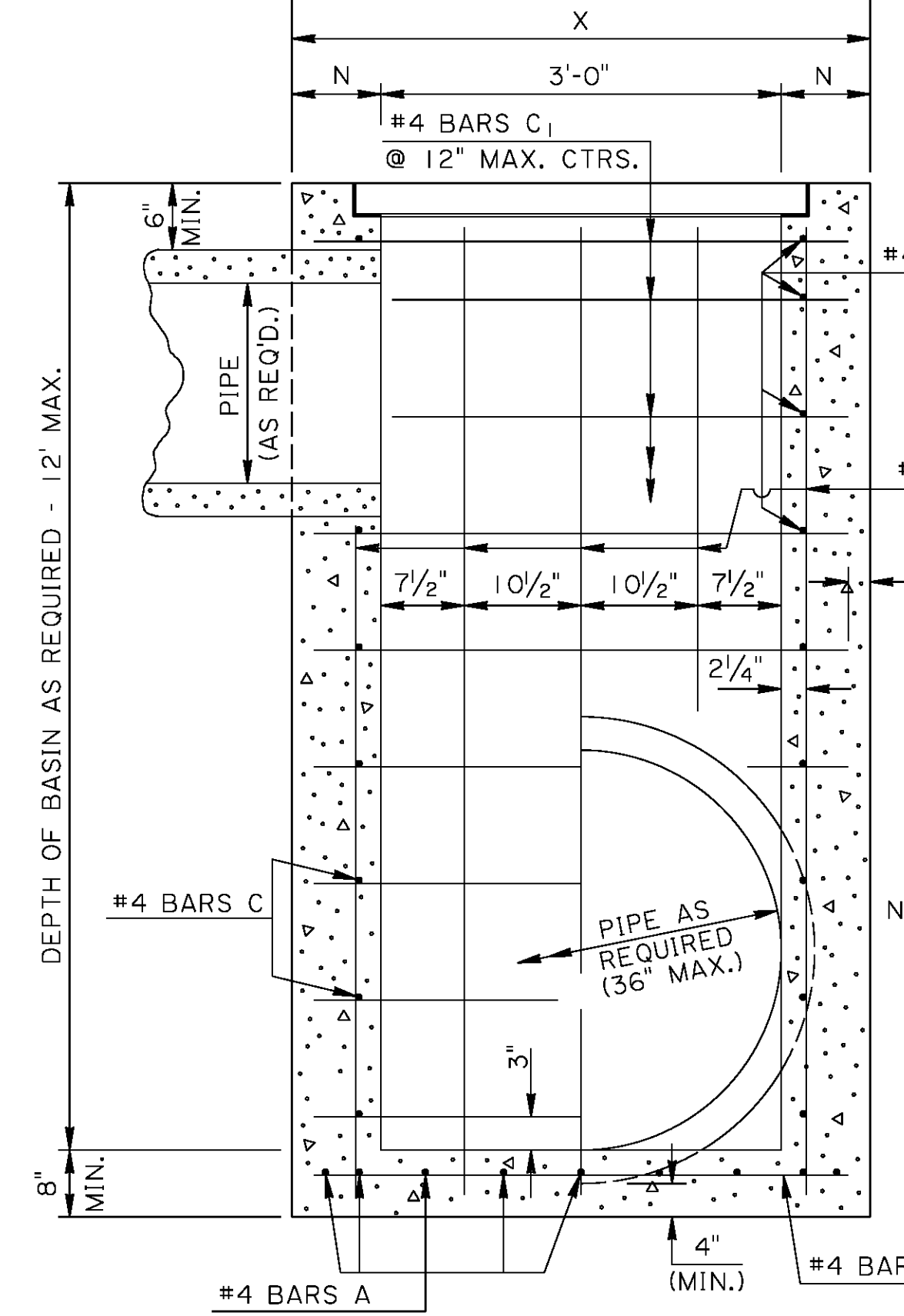


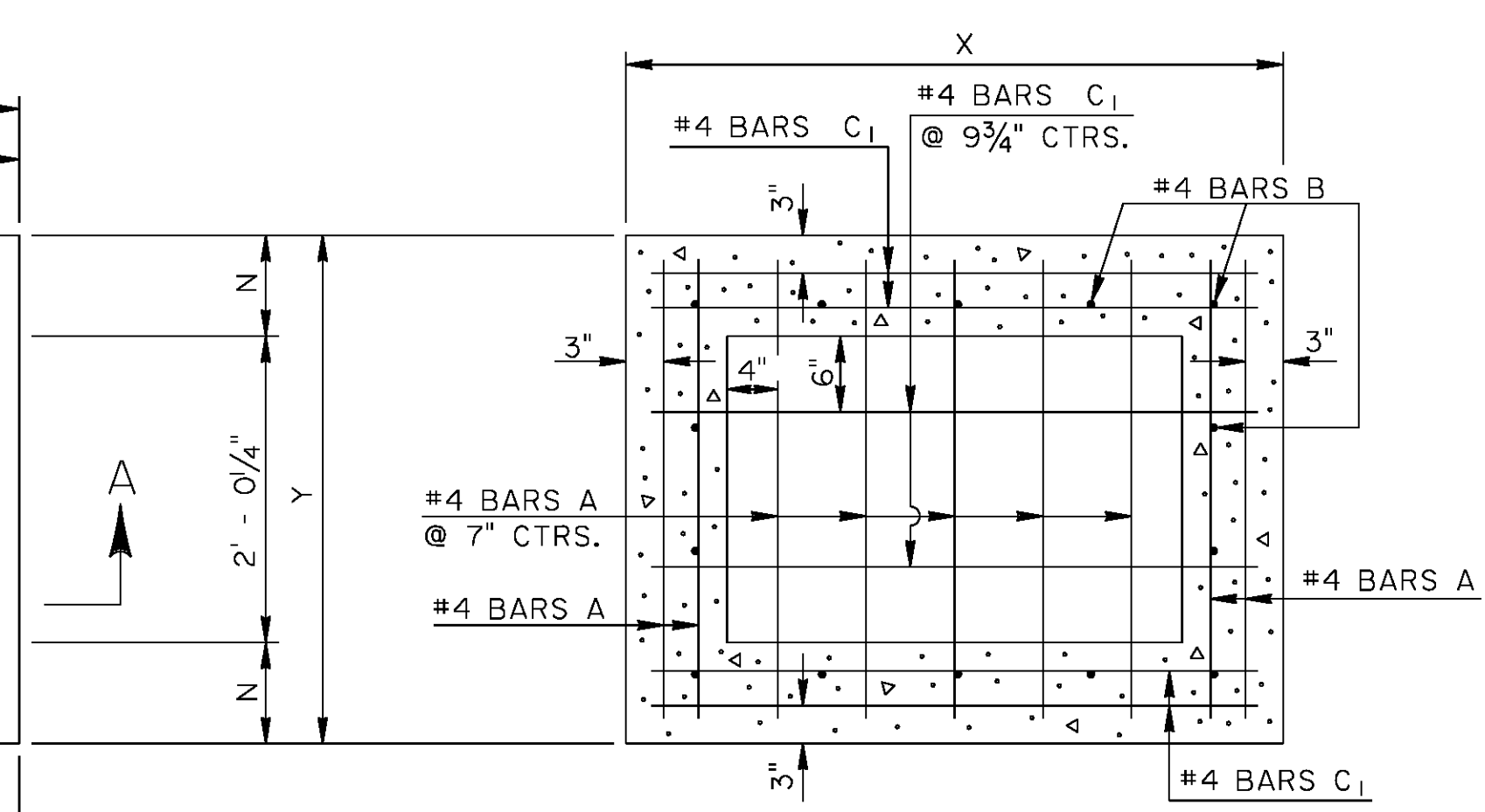
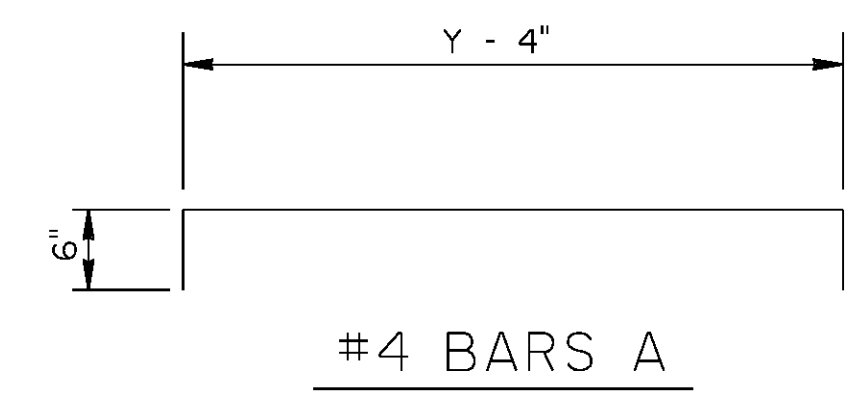
**PLAN**  
\* GRATE TO BE TYPE "B" OR "C"  
TYPE "B" SHOWN.

NOTE: TYPE "B" GRATE TO BE USED WHERE NO PEDESTRIAN TRAFFIC IS EXPECTED.  
TYPE "C" GRATE TO BE USED WHERE PEDESTRIAN TRAFFIC IS EXPECTED.

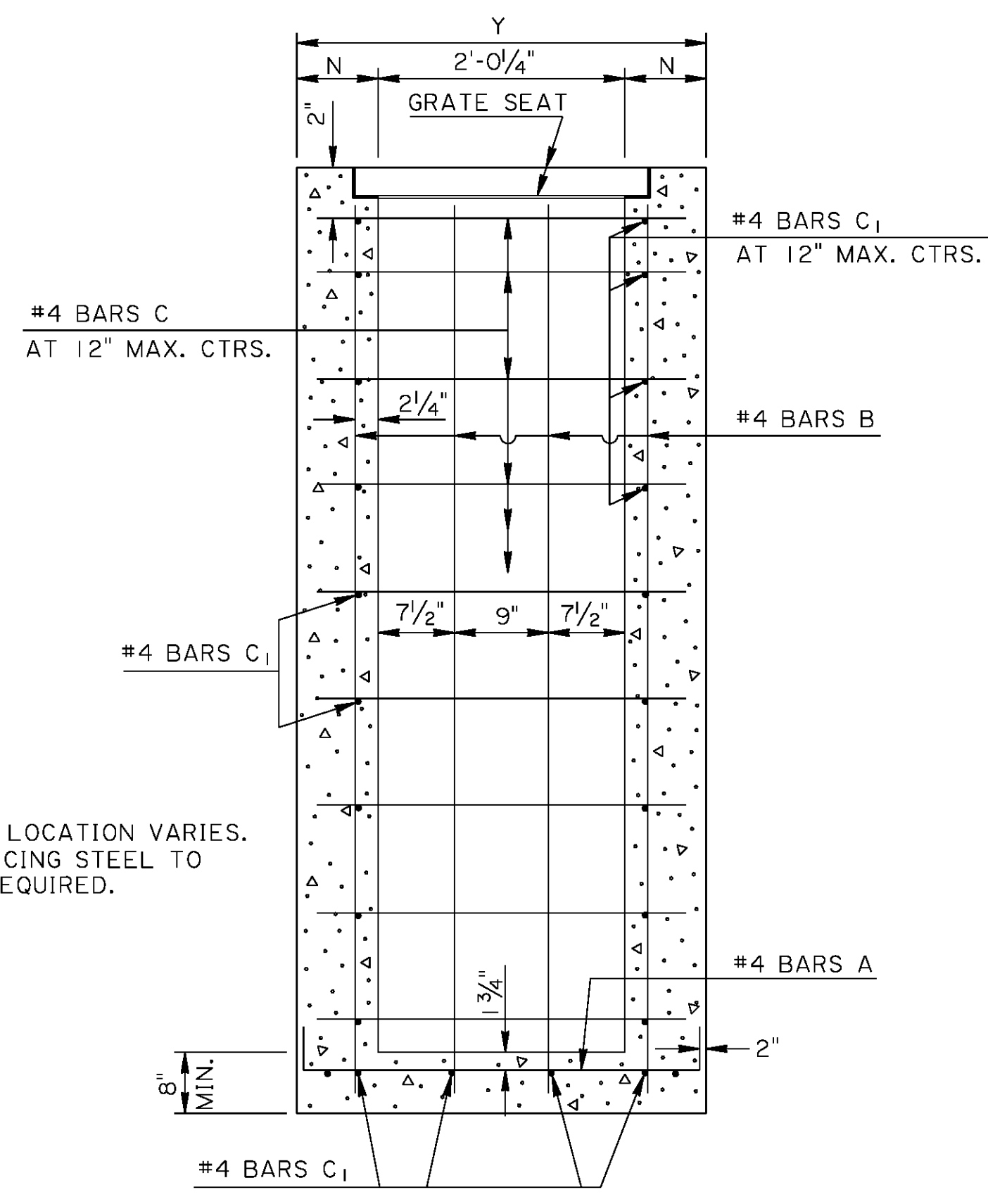
NOTE: PIPE SIZE & LOCATION VARIES. CUT REINFORCING STEEL TO CLEAR, AS REQUIRED.



**SECTION A-A**

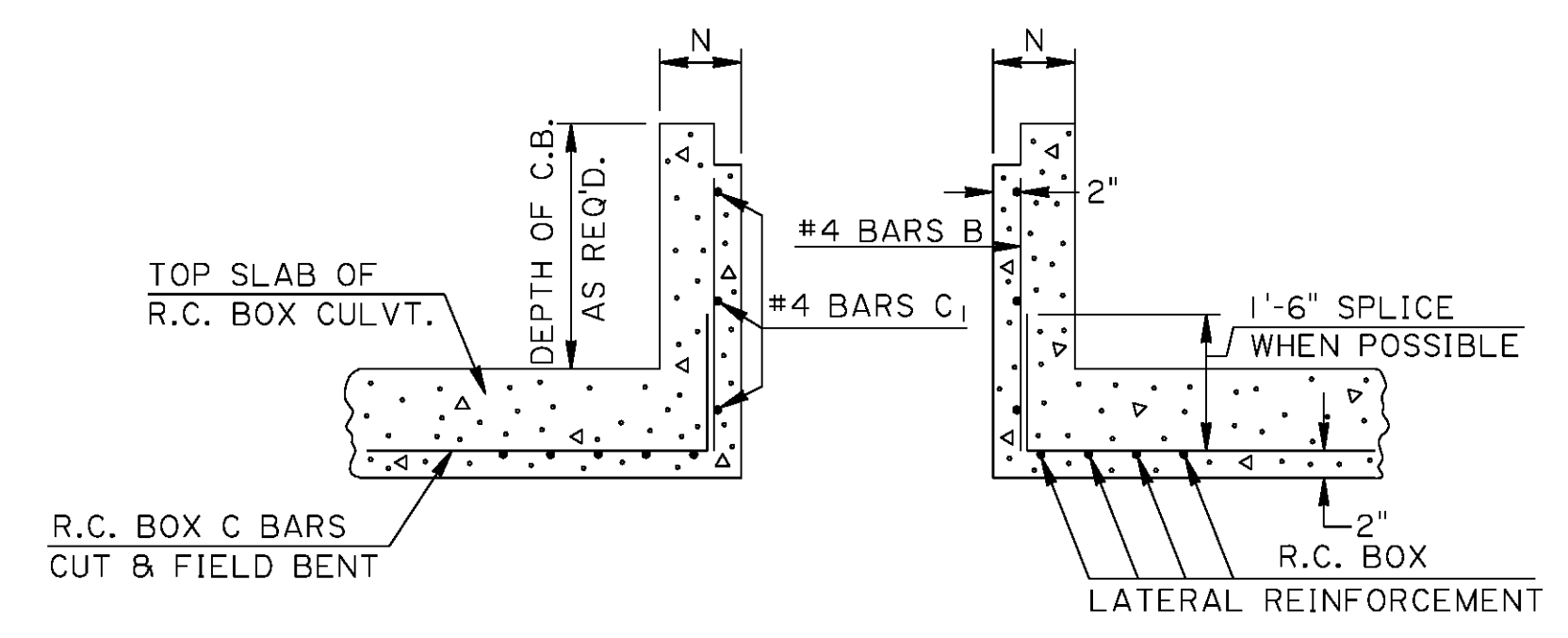


**HORIZONTAL SECTION**  
SHOWING BOTTOM SLAB REINFORCING STEEL

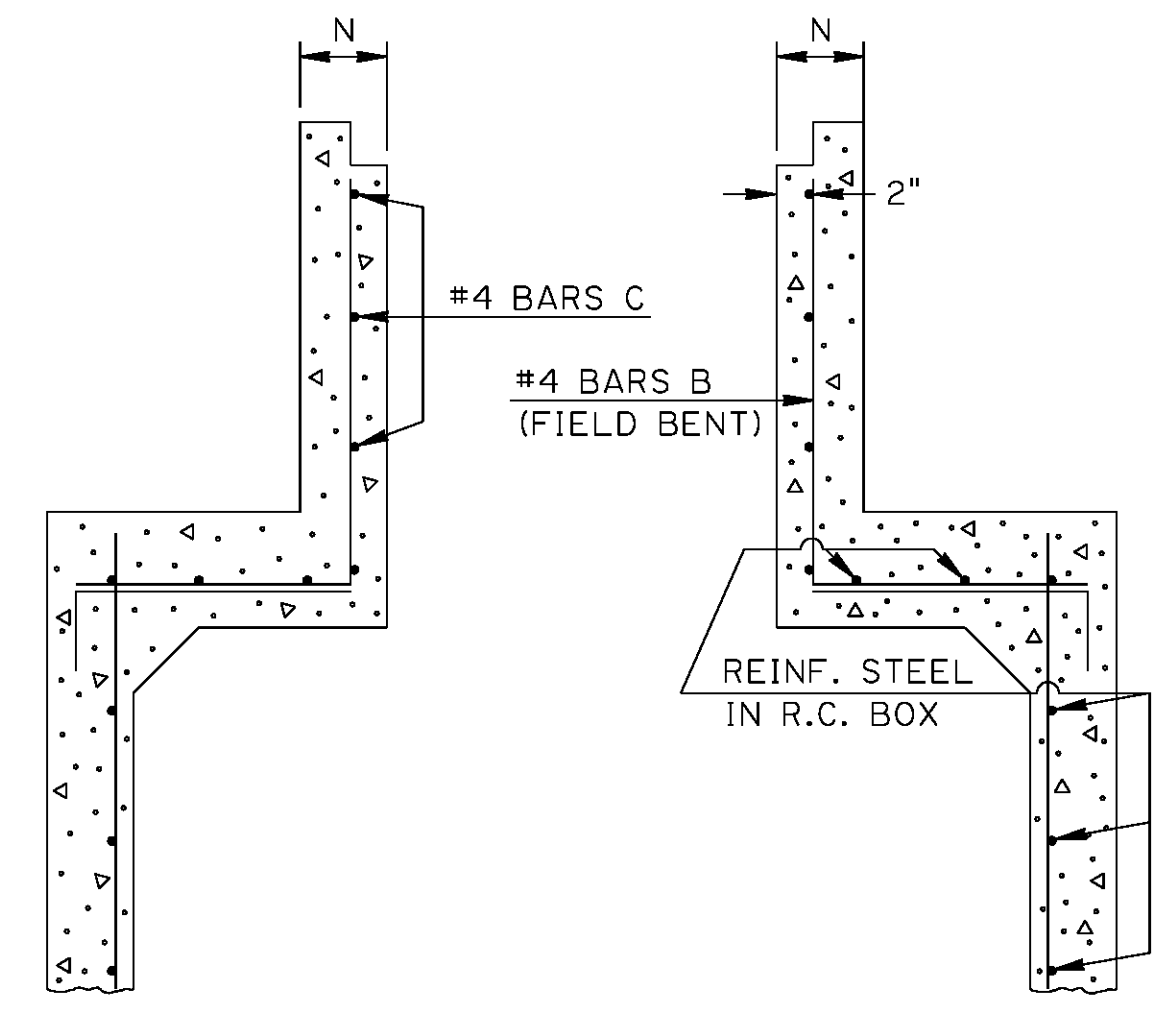


**SECTION B-B**

DIMENSIONS			
DEPTH OF BASIN	N	X	Y
FT.	IN. (MIN.)	FT.- IN.	FT.- IN.
0 - 8	7	4-2	3-2 1/4
8.1 - 12	8	4-4	3-4 1/4



**LONGITUDINAL SECTION**  
SHOWING CATCH BASIN USED WITH R.C. BOX CULVERT.



**TRANSVERSE SECTION**  
SHOWING CATCH BASIN USED WITH R.C. BOX CULVERT.

**GENERAL NOTES:**  
SECTION 702 OF THE CURRENT LAFAYETTE CONSOLIDATED GOVERNMENT STANDARD SPECIFICATIONS SHALL APPLY.  
DIMENSIONS RELATING TO REINFORCING STEEL ARE TO BAR CENTERS.  
VERTICAL REINFORCING STEEL MAY BE SPLICED. SPLICE LENGTH IS 35 DIAMETERS.  
FOR DETAILS OF GRATE AND SEAT, SEE STD. PLAN MC-01 (TYPE B or C).  
SEE PLANS FOR TYPE OF GRATE TO BE USED FOR EACH CATCH BASIN.  
PIPE TO BE GROUTED IN AFTER INSTALLATION.

**CONCRETE OPEN TOP CATCH BASIN**  
MAX. PIPE SIZE: 36" x 24" MAX. DEPTH: 12'

CB-01