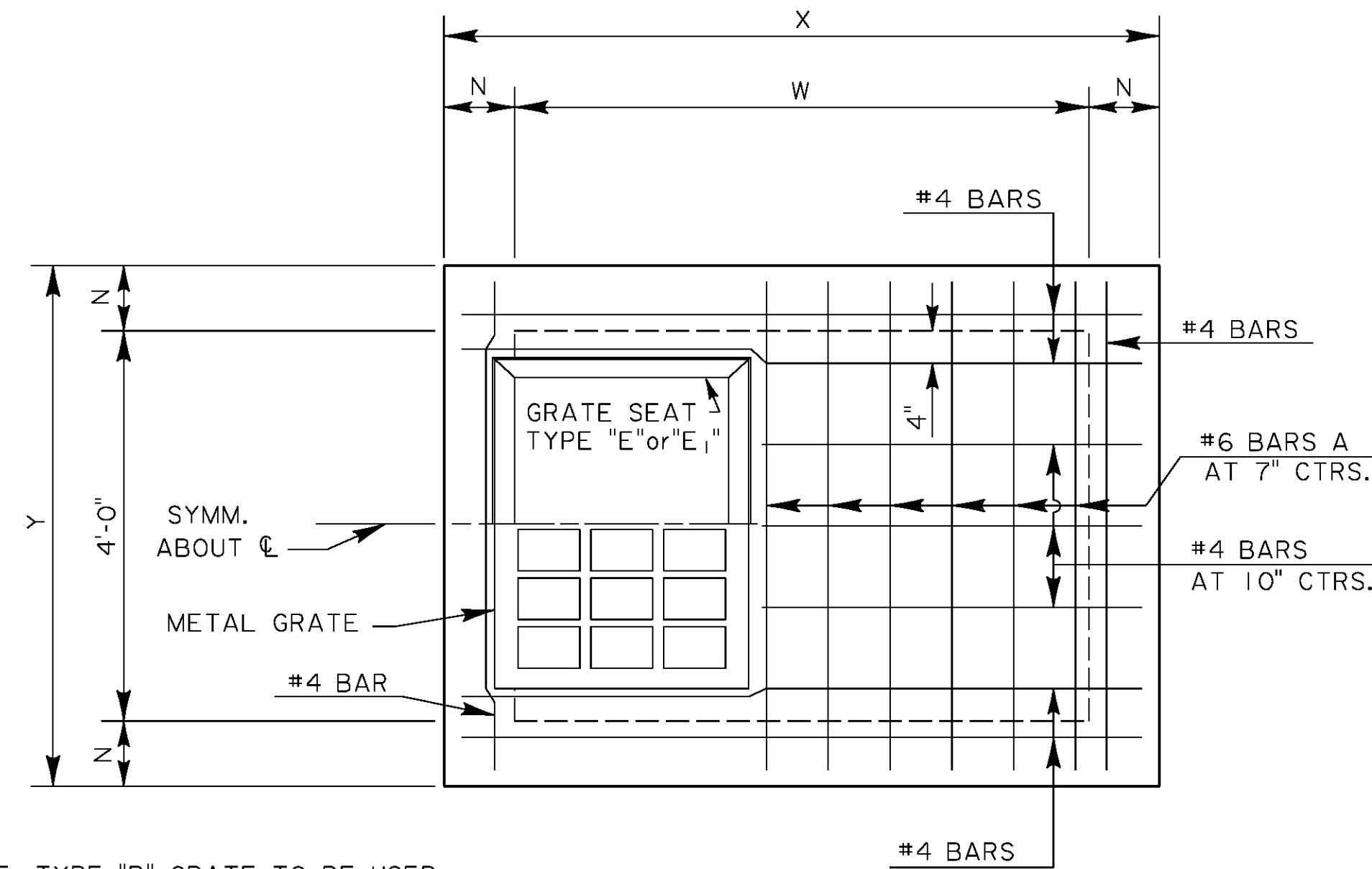


**SECTIONAL  
PLAN**  
(SHOWING BOTTOM SLAB & WALLS)



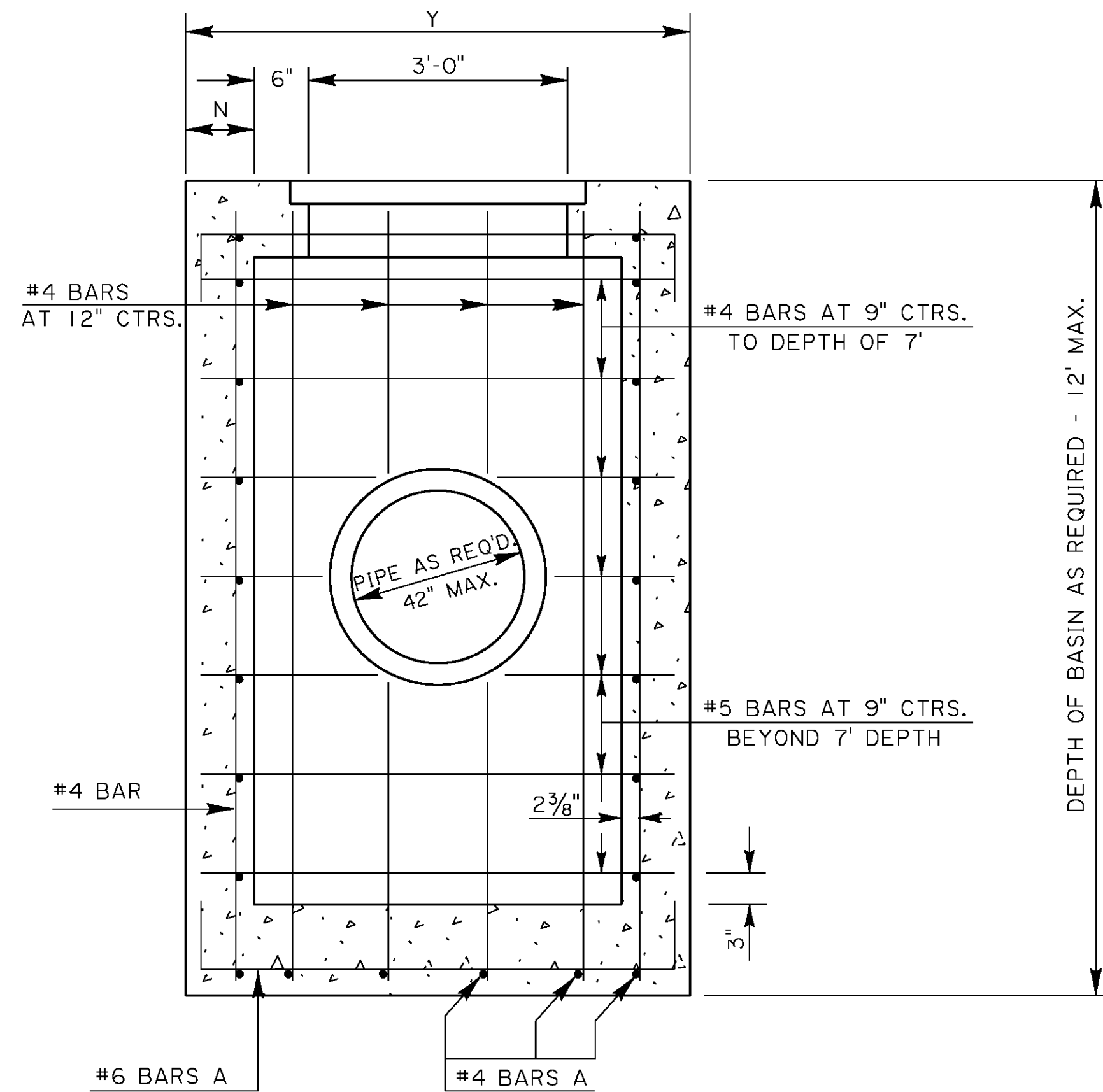
NOTE: TYPE "B" GRATE TO BE USED WHERE NO PEDESTRIAN TRAFFIC IS EXPECTED.

TYPE "C" GRATE TO BE USED WHERE PEDESTRIAN TRAFFIC IS EXPECTED.

**PLAN**  
GRATE TO BE TYPE "B" or "C".  
TYPE "B" SHOWN.

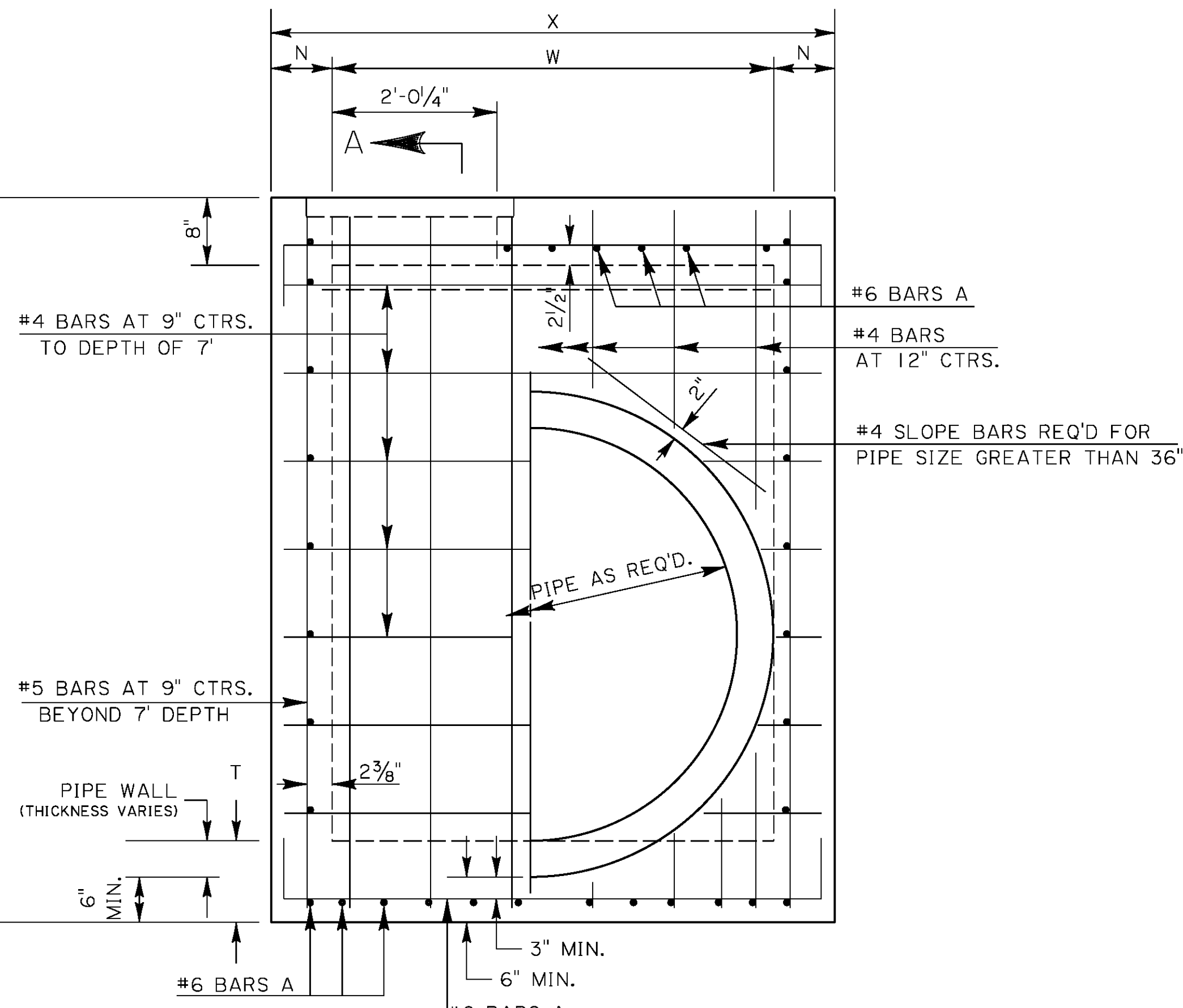
TRUNK PIPE	DEPTH TO 8'					DEPTH 8' TO 12'				
	N	T	W	X	Y	N	T	W	X	Y
INCH	INCH (MIN.)	INCH (MIN.)	FT-IN	FT-IN	FT-IN	INCH (MIN.)	INCH (MIN.)	FT-IN	FT-IN	FT-IN
42	7	9	4-3	5-5	5-2	8	9	4-3	5-7	5-4
48	7	9	4-10	6-0	5-2	8	9	4-10	6-2	5-4
54	7	9	5-5	6-7	5-2	8	9	5-5	6-9	5-4
60	7	10	6-0	7-2	5-2	8	10	6-0	7-4	5-4
66	7	10	6-7	7-9	5-2	8	10	6-7	7-11	5-4
72	7	10	7-2	8-4	5-2	8	10	7-2	8-6	5-4
84	7	10	8-4	9-6	5-2	8	10	8-4	9-8	5-4
96	7	10	9-6	10-8	5-2	8	10	9-6	10-10	5-4

NOTE: X AND W DIMENSIONS MAY BE VARIED FOR SKEWED PIPE, BUT W SHALL NOT EXCEED 9'-6".

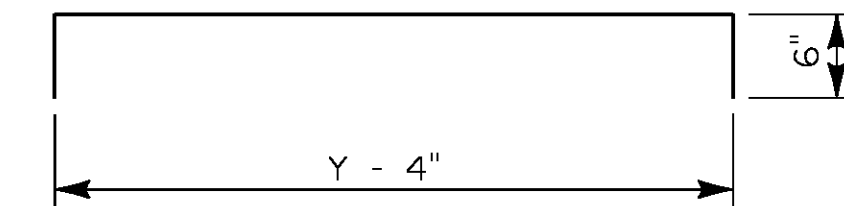


**SECTION A-A**

NOTE: PIPE SIZE & LOCATION VARIES. CUT REINFORCING STEEL TO CLEAR, AS REQUIRED.



**ELEVATION**



**#6 BARS A**  
(4 1/2" DIAM. PIN)

**GENERAL NOTES:**

SECTION 702 OF THE CURRENT LAFAYETTE CONSOLIDATED GOVERNMENT STANDARD SPECIFICATIONS SHALL APPLY.

DIMENSIONS RELATING TO REINFORCING STEEL ARE TO BAR CENTERS.

VERTICAL REINFORCING STEEL MAY BE SPLICED. SPLICE LENGTH IS 35 DIAMETERS.

FOR DETAILS OF GRATE AND SEAT, SEE STD. PLAN MC-01 (TYPE B or C).

SEE PLANS FOR TYPE OF GRATE TO BE USED FOR EACH CATCH BASIN.