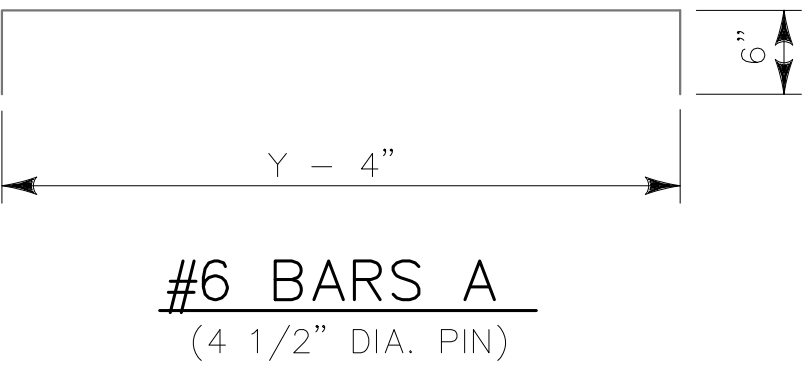
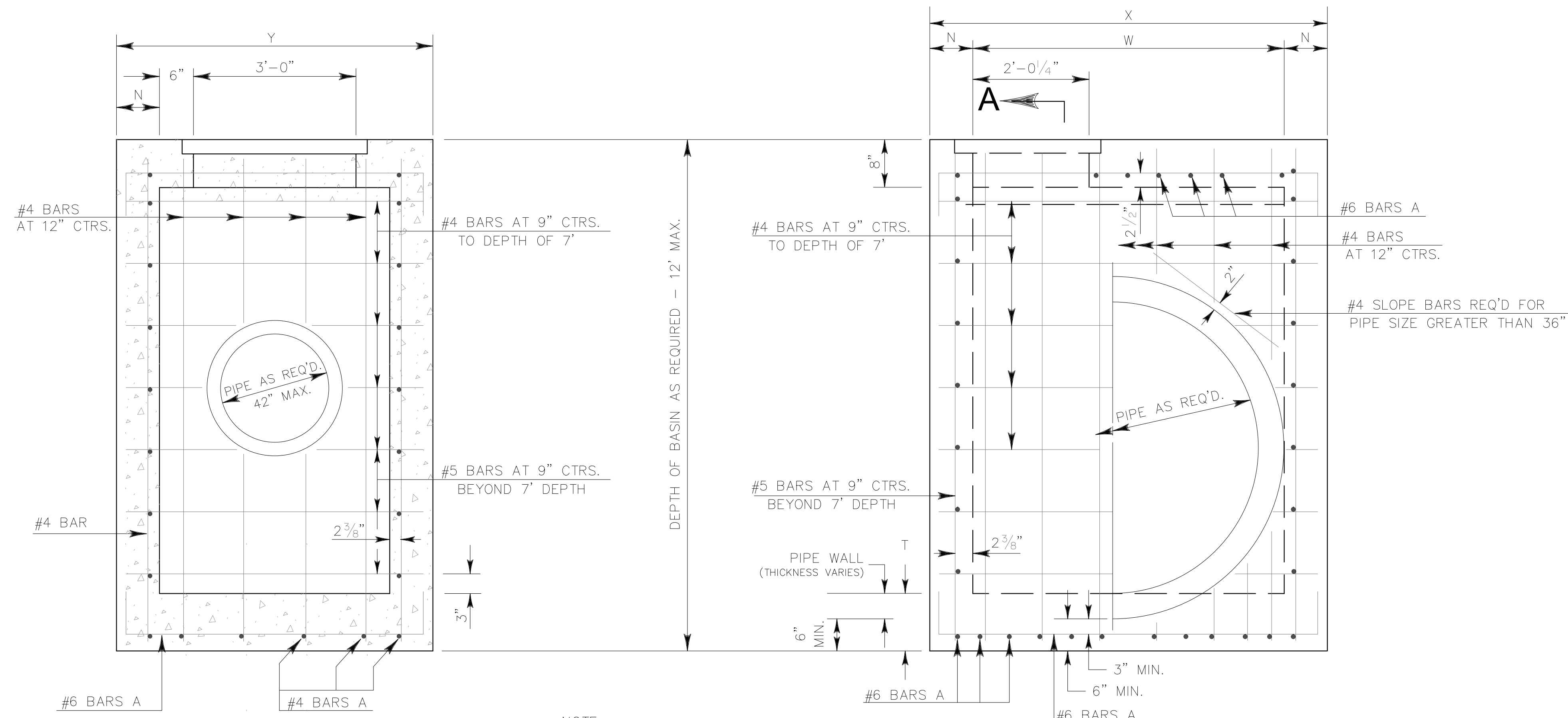


DIMENSIONS										
TRUNK PIPE	DEPTH TO 8'					DEPTH 8' TO 12'				
	N	T	W	X	Y	N	T	W	X	Y
INCH	INCH (MIN.)	INCH (MIN.)	FT-IN	FT-IN	FT-IN	INCH (MIN.)	INCH (MIN.)	FT-IN	FT-IN	FT-IN
42	7	9	4-3	5-5	5-2	8	9	4-3	5-7	5-4
48	7	9	4-10	6-0	5-2	8	9	4-10	6-2	5-4
54	7	9	5-5	6-7	5-2	8	9	5-5	6-9	5-4
60	7	10	6-0	7-2	5-2	8	10	6-0	7-4	5-4
66	7	10	6-7	7-9	5-2	8	10	6-7	7-11	5-4
72	7	10	7-2	8-4	5-2	8	10	7-2	8-6	5-4
84	7	10	8-4	9-6	5-2	8	10	8-4	9-8	5-4
96	7	10	9-6	10-8	5-2	8	10	9-6	10-10	5-4

NOTE: X AND W DIMENSIONS MAY BE VARIED FOR SKEWED PIPE, BUT W SHALL NOT EXCEED 9'-6".



GENERAL NOTES:

SECTION 702 OF THE CURRENT LAFAYETTE CONSOLIDATED GOVERNMENT STANDARD SPECIFICATIONS SHALL APPLY.

DIMENSIONS RELATING TO REINFORCING STEEL ARE TO BAR CENTERS.

VERTICAL REINFORCING STEEL MAY BE SPLICED. SPLICE LENGTH IS 35 DIAMETERS.

FOR DETAILS OF GRATE AND SEAT, SEE STD. PLAN MC-01 (TYPE B or C).

SEE PLANS FOR TYPE OF GRATE TO BE USED FOR EACH CATCH BASIN.