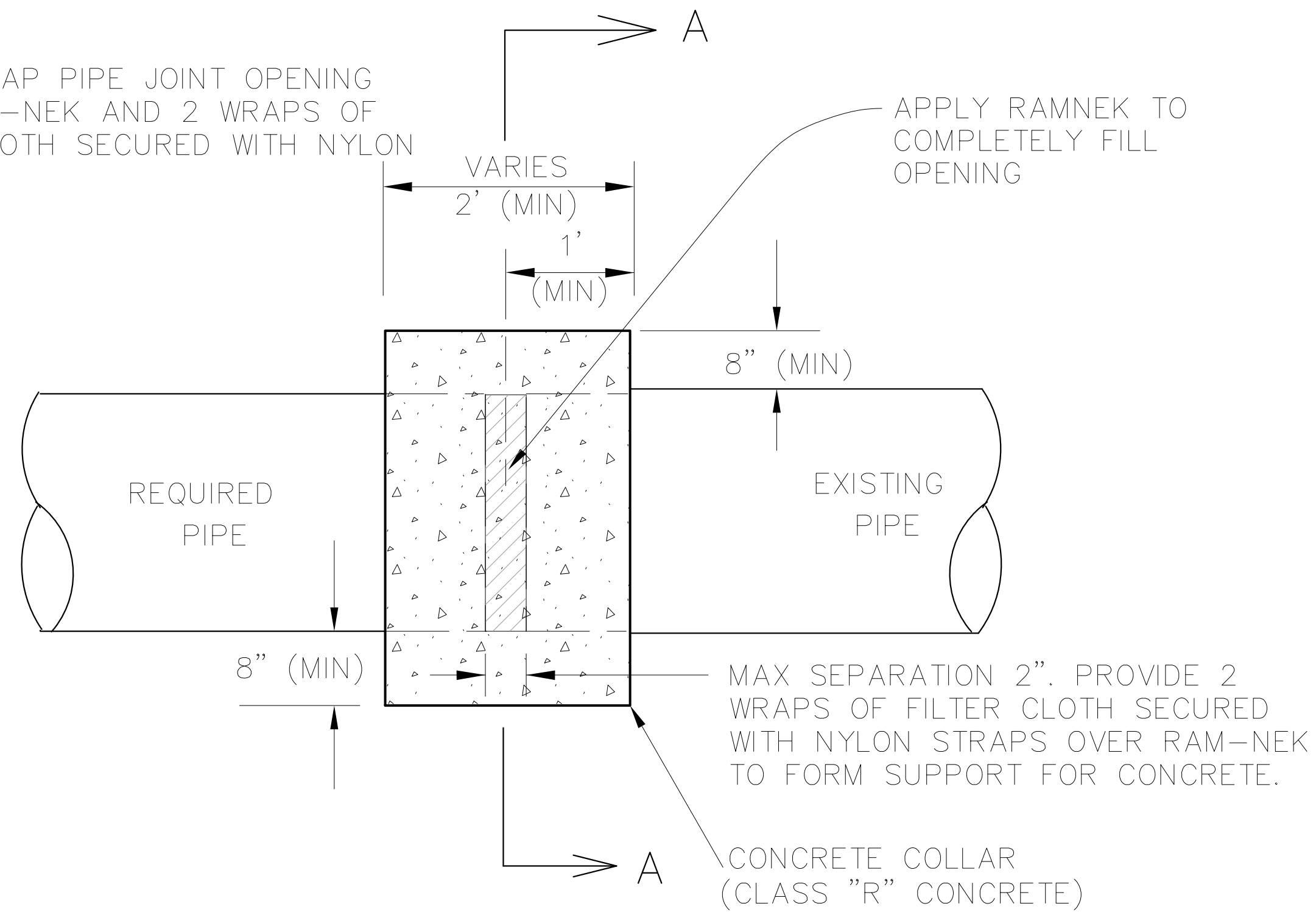


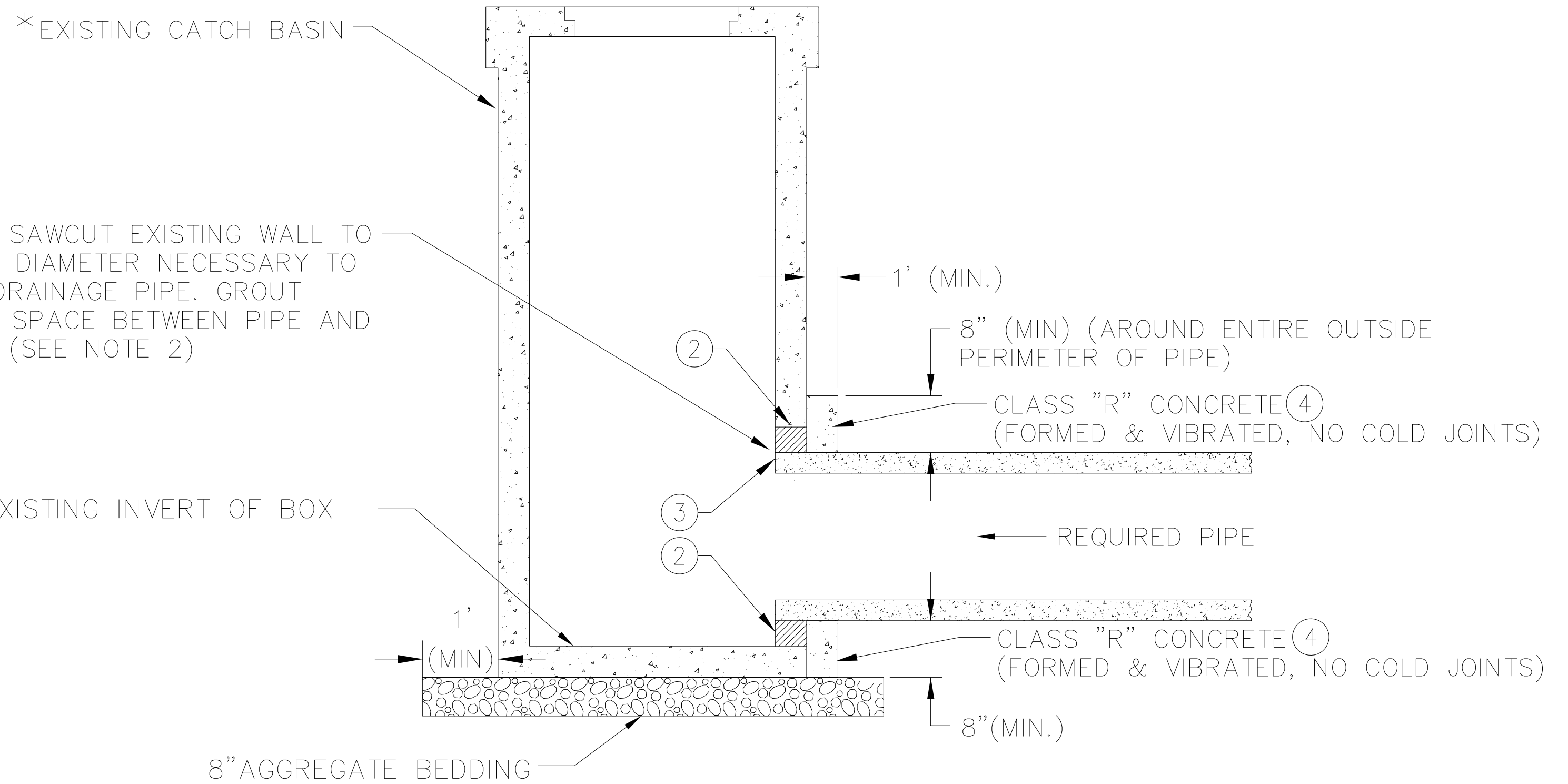
NOTE: WRAP PIPE JOINT OPENING WITH RAM-NEK AND 2 WRAPS OF FILTER CLOTH SECURED WITH NYLON STRAPS.



CONCRETE COLLAR DETAIL
PIPE TO PIPE
N.T.S.

NOTES FOR CONCRETE COLLAR DETAIL, PIPE TO EXISTING CONCRETE CATCH BASIN:

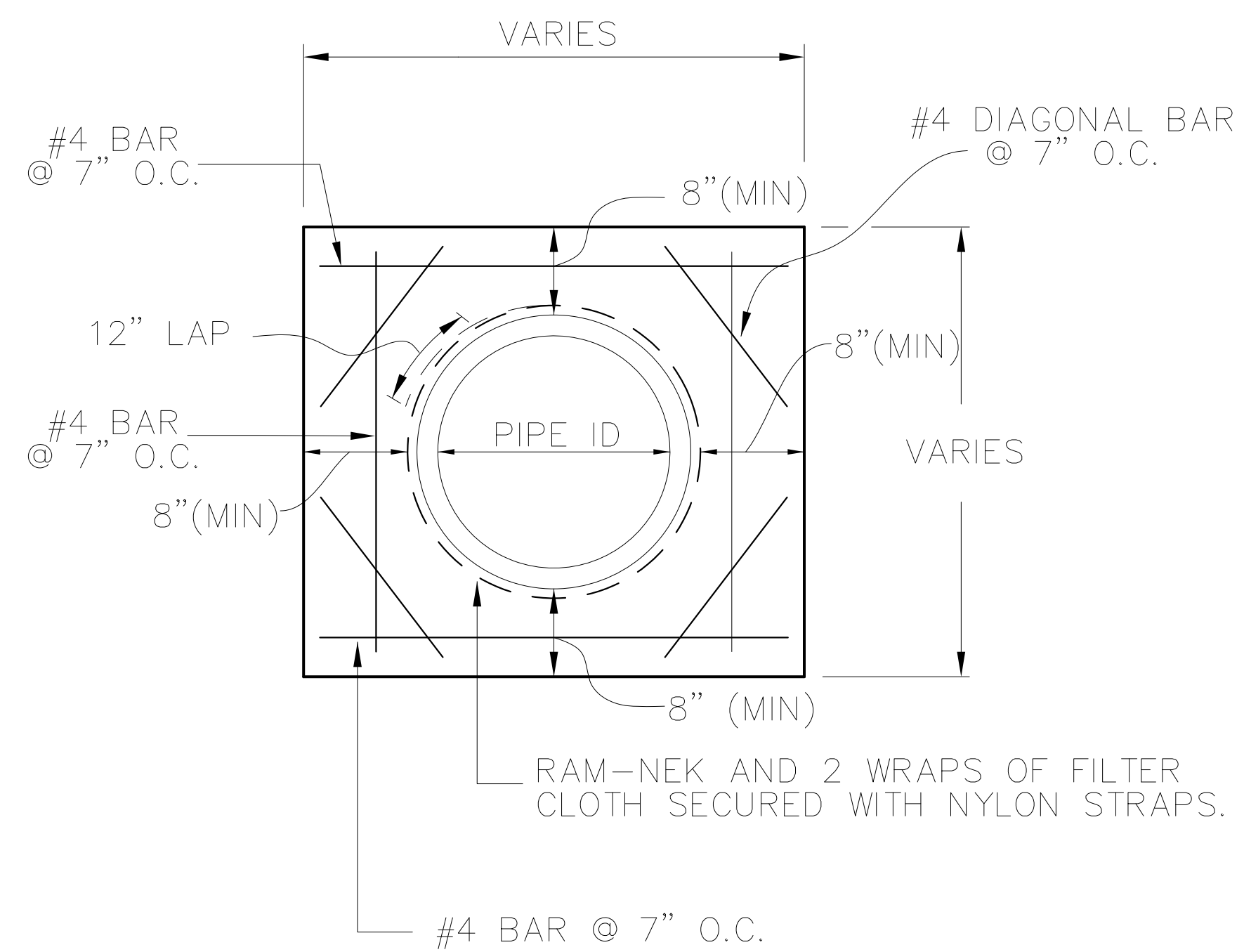
- 1) PAYMENT OF COLLARS TO BE AS PER SECTION 701 OF THE LAFAYETTE CONSOLIDATED GOVERNMENT STANDARD SPECIFICATIONS FOR ROADS AND BRIDGES.
- 2) PIPE TO BE GROUTED IN PRIOR TO INSTALLATION OF CONCRETE COLLAR WITH A NON-SHRINK GROUT LISTED ON THE LA-DOTD AML.
- 3) ALL PIPES TO BE CUT FLUSH WITH INSIDE OF DRAINAGE STRUCTURE $\pm 1/2$ ".
- 4) PAYMENT FOR THE CONCRETE COLLAR SHALL BE PER EACH INSTALLED. THE COLLAR MUST BE FORMED AND VIBRATED.



CONCRETE COLLAR DETAIL
PIPE TO EXISTING CONCRETE CATCH BASIN
N.T.S.

NOTE: CONCRETE COLLAR TO BE REINFORCED AS SHOWN IN SECTION A-A.

*DETAIL OF COLLAR AT TIE IN TO PRE-CAST CONCRETE DRAINAGE STRUCTURES SHALL BE AS SHOWN ON LCG STANDARD DETAIL PC-01.



SECTION A-A