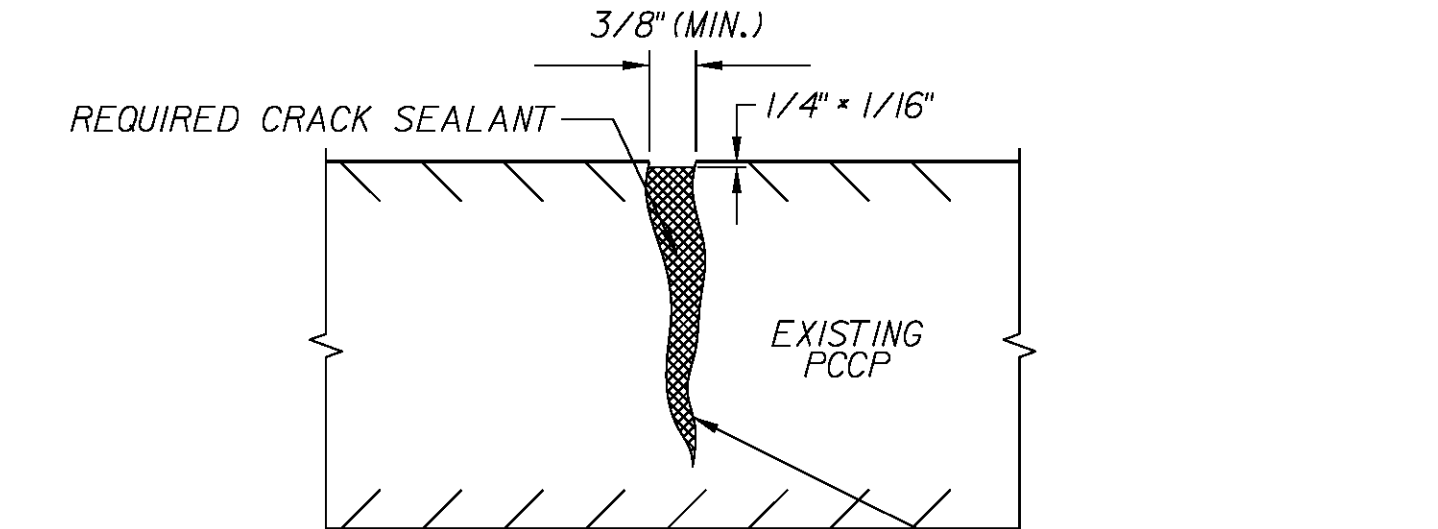
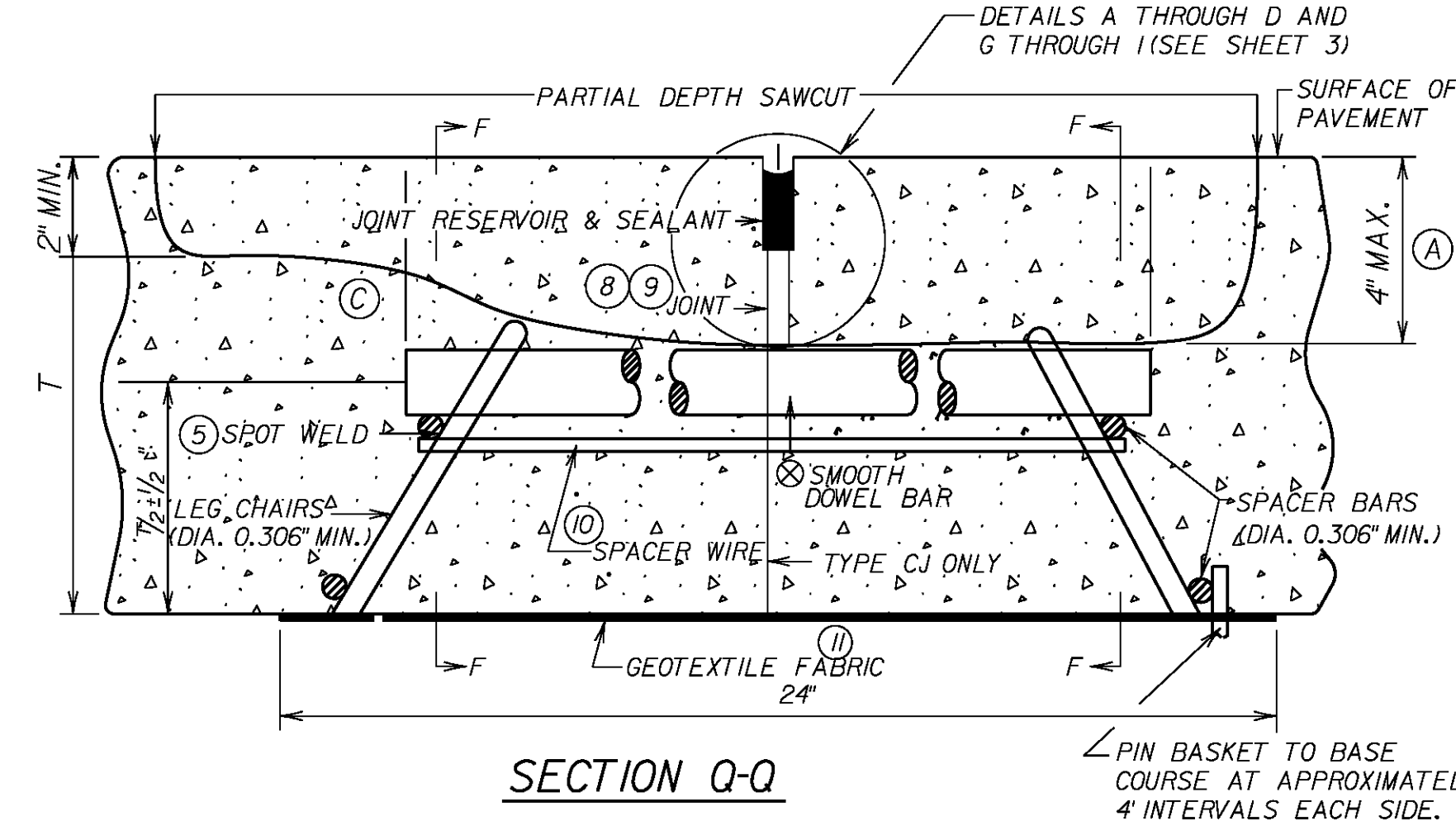
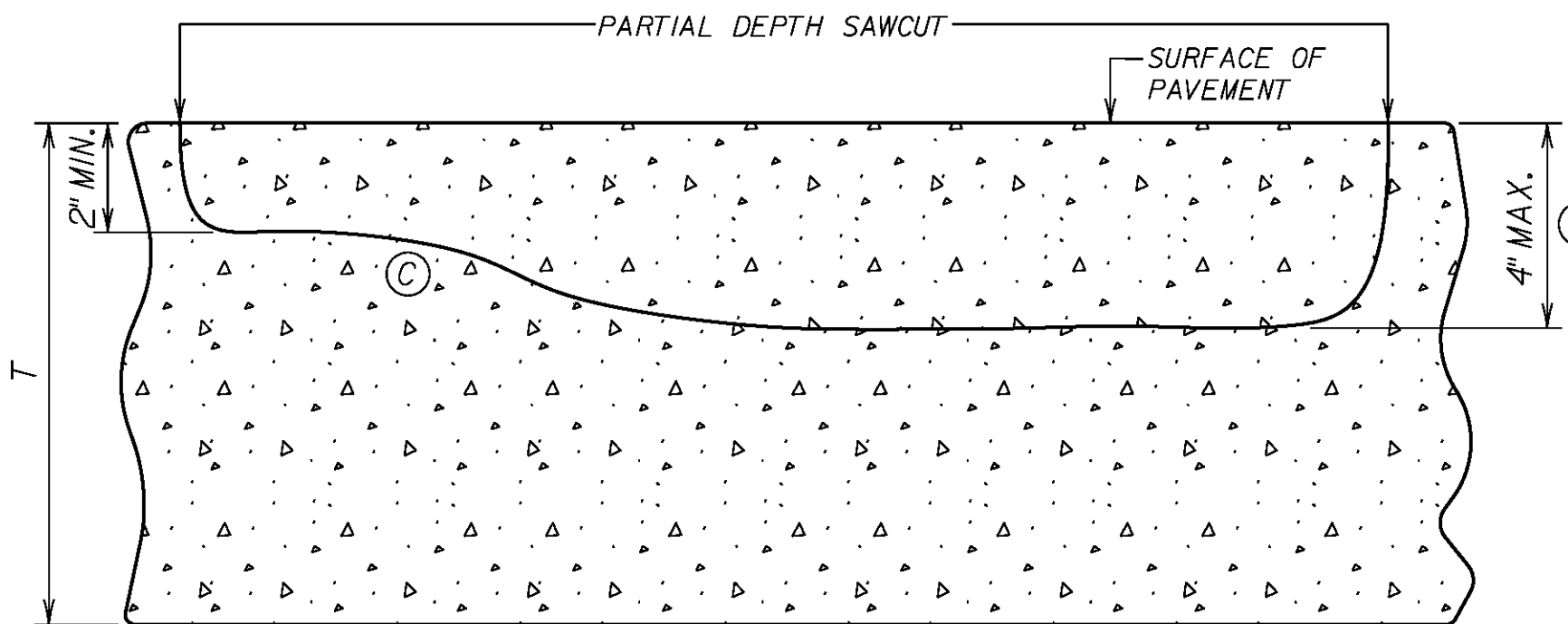


DEFORMED TIE BARS OF THE SIZE, LENGTH, AND THE SPACING SPECIFIED IN TABLE 1 LISTED UNDER SMOOTH DOWL BARS, SHALL BE USED. THE BARS SHALL BE INSTALLED IN EXISTING PAVEMENT BY DRILLING HOLES LARGER THAN THE BAR DIAMETER (1/8" WHEN EPOXY IS USED, 1/2" WHEN A CEMENTITIOUS GROUT ANCHOR SYSTEM IS USED, AND IN ACCORDANCE WITH MANUFACTURER'S RECOMMENDATIONS WHEN ADHESIVE ANCHOR SYSTEMS ARE USED) TO A REQUIRED DEPTH OF 1/2 THE BAR LENGTH. THE HOLES SHALL BE DRILLED AND FILLED IN ACCORDANCE WITH SUBSECTION 601.09(F) BEFORE INSERTION OF THE BARS.



NOTES:

(A) APPLIES TO RANDOM CRACKS GREATER THAN 3/8" IN WIDTH ON JOINTED PCCP.

(B) CRACK SEALING LIMITS SHALL BE AS DIRECTED BY THE PROJECT ENGINEER.

(C) SEALANT FOR TRANSVERSE CRACKS SHALL BE ASTM D3405 GRADE A.

(D) SEALANT FOR LONGITUDINAL CRACKS SHALL BE LOW MODULUS TYPE 1 GRADE A EPOXY RESIN SYSTEM OR SILICONE.

(E) ALL WORK ON THIS DETAIL TO BE PAID FOR UNDER ITEM 602-03, CLEANING AND SEALING RANDOM CRACKS.

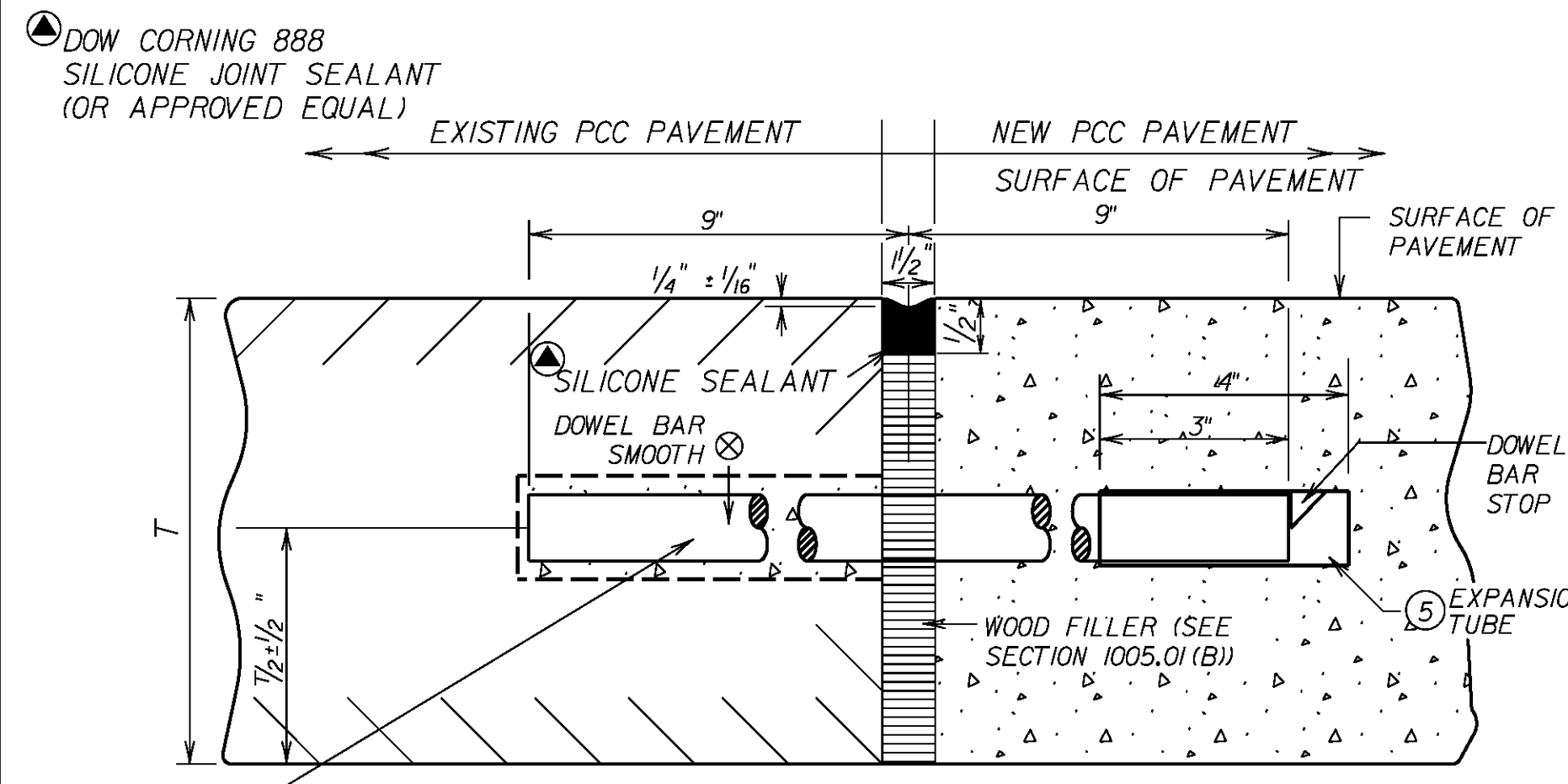
NOTES:

(A) IF DEPTH OF SPALL IS GREATER THAN 4", FULL DEPTH PATCH MUST BE CONSTRUCTED. SEE FULL DEPTH PATCHING DETAIL.

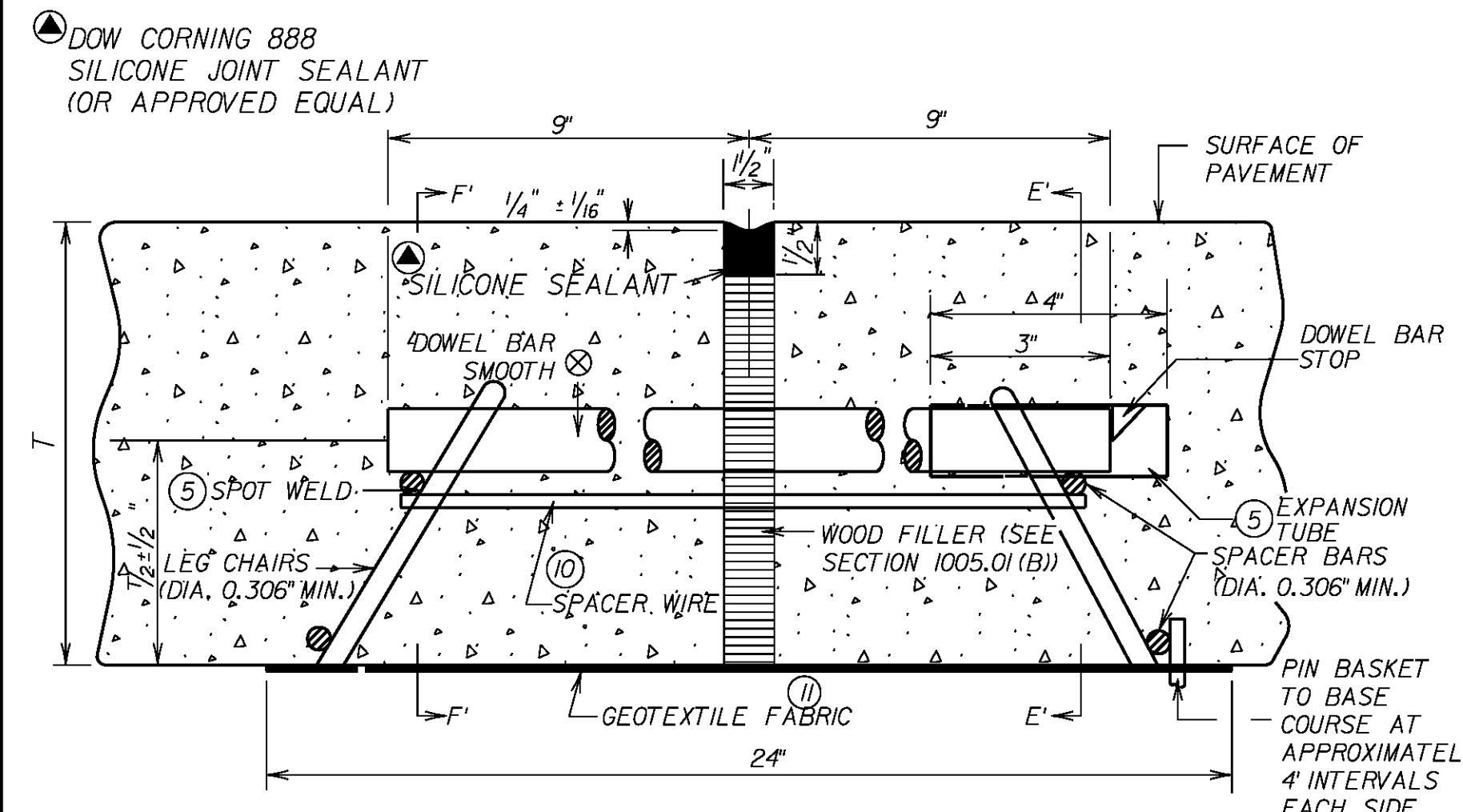
(B) MATCH WIDTH AND LOCATION OF EXISTING JOINTS.

(C) EPOXY SHALL BE AN APPROVED PRODUCT LISTED IN LADOTD QPL32.

(D) ALL WORK ON THIS DETAIL TO BE PAID FOR UNDER ITEM 602-06, PARTIAL DEPTH PATCHING OF JOINTED CONCRETE PAVEMENT.

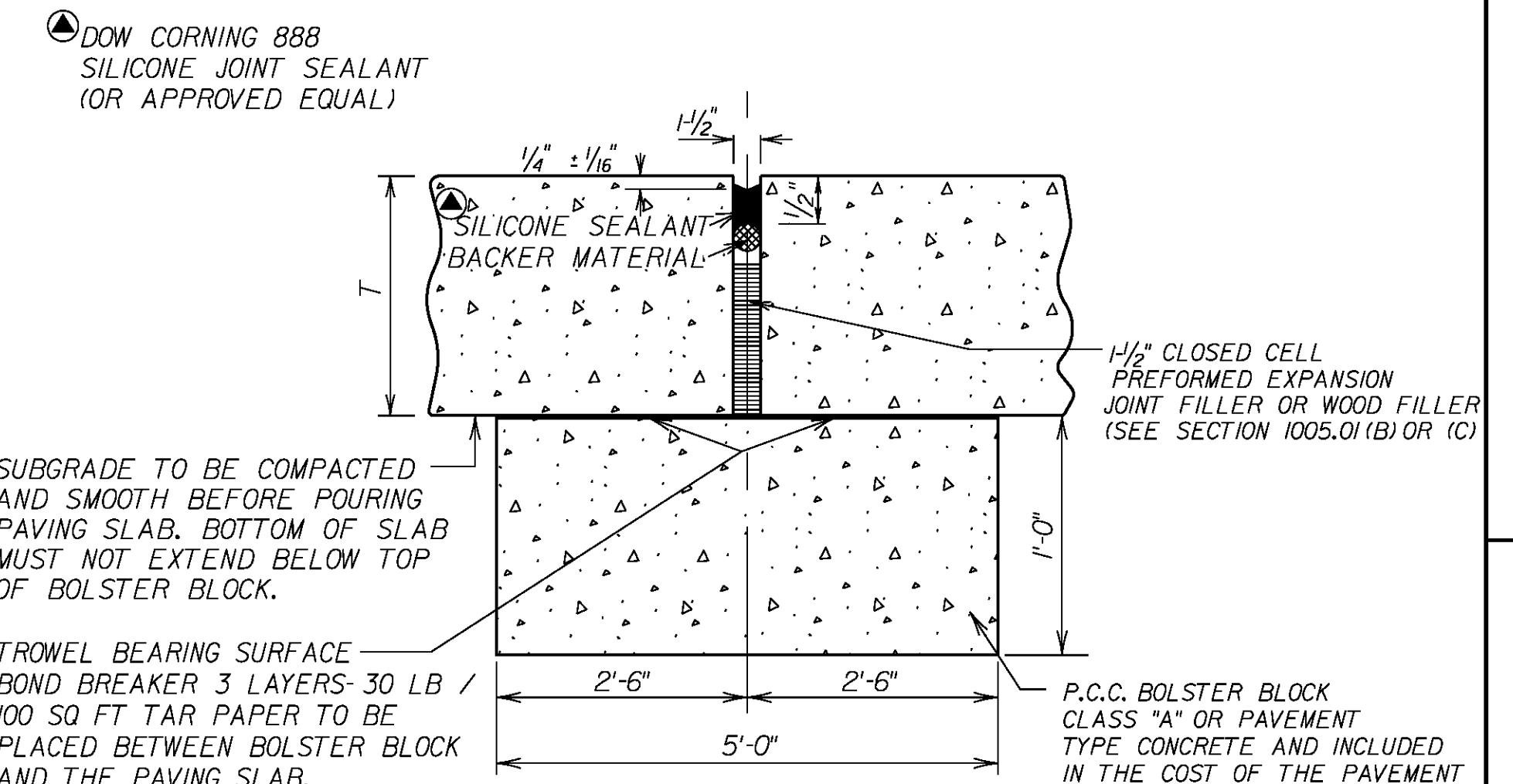


SMOOTH DOWL BARS OF THE SIZE, LENGTH AND SPACING AS SPECIFIED IN TABLE 1 SHALL BE USED. THE BARS SHALL BE PLACED IN THE EXISTING PAVEMENT BY DRILLING HOLES 1/8" LARGER THAN THE DIA. OF THE DOWL BAR TO A DEPTH OF 1/2 THE BAR LENGTH AND FILLING THE HOLES IN ACCORDANCE WITH SECTION 601.09(B) BEFORE INSERTION OF THE DOWL BARS. (SEE TABLE 1). GREASE BARS PRIOR TO PLACING CONCRETE PAVEMENT.



SEE TABLE 1

(A) TYPE EJ REHAB MODIFIED 1-1/2" SHALL BE USED AT LCG'S DISCRETION.



(B) TYPE EJ REHAB 1-1/2" AND EJ REHAB MODIFIED 1-1/2" SHALL BE SEALED WITH 2 COMPONENT SILICONE CONFORMING TO 1005.02(D). JOINTS SHALL BE CLEANED PRIOR TO SEALING.

NOT TO SCALE

(TRANSVERSE EXPANSION JOINT) (A)