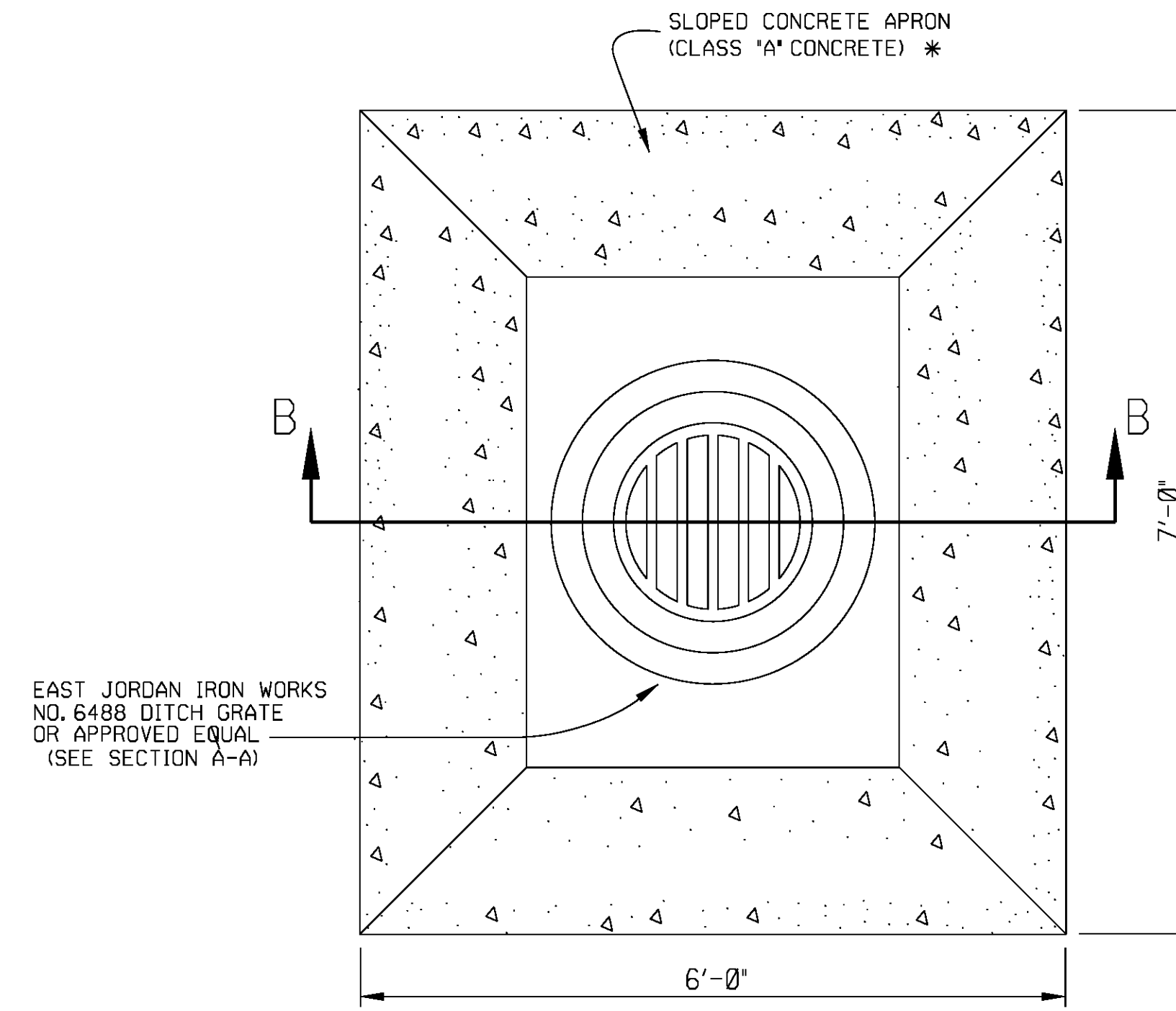
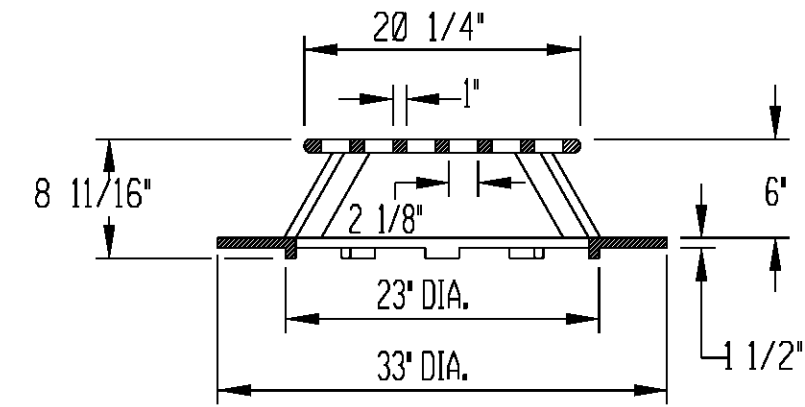


PLAN DETAIL WITH PIPE RAILING

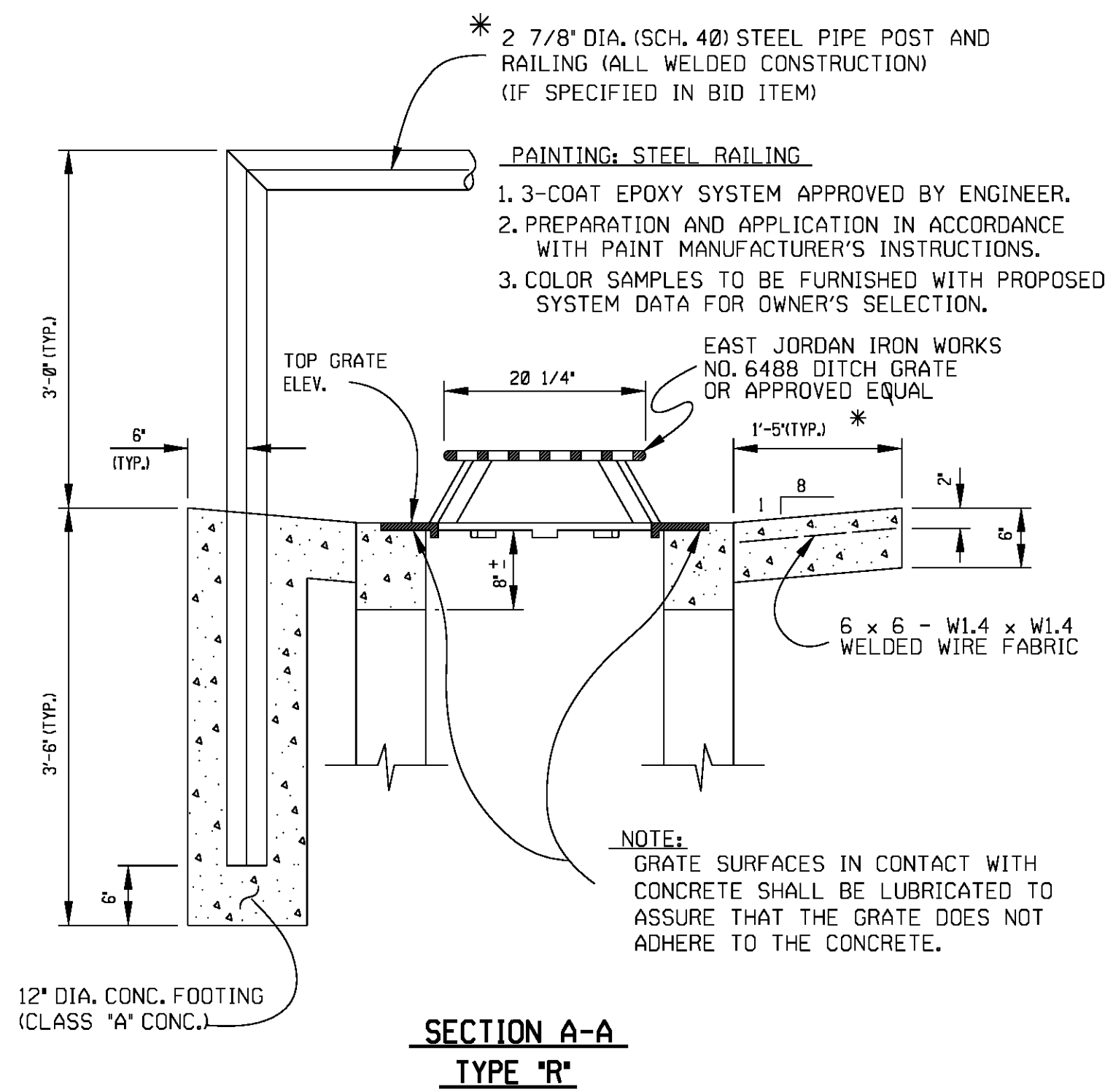


PLAN DETAIL WITHOUT PIPE RAILING



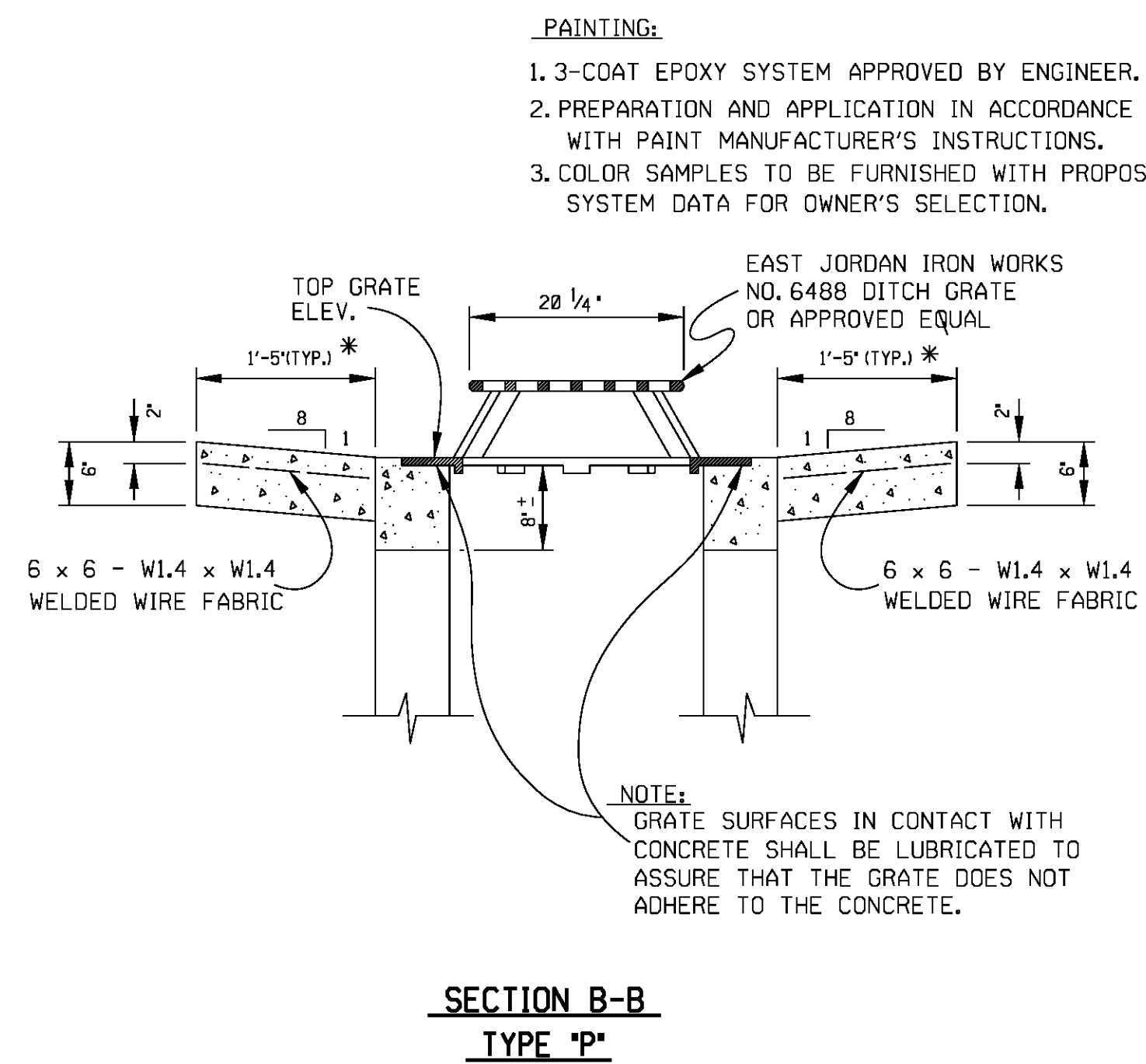
EAST JORDAN IRON WORKS NO. 6488 DITCH GRATE DETAIL

NOTE:
APPROVED EQUAL: NEENAH R-4341-A DITCH GRATE.



SECTION A-A TYPE 'R'

NOTE:
CONCRETE APRON, WELDED WIRE FABRIC, STEEL POST & RAILING, AND CONCRETE FOOTINGS, TO BE PAID UNDER "CATCH BASIN ITEM," IF SPECIFIED IN BID ITEM.



SECTION B-B TYPE 'P'

PAINTING:
1. 3-COAT EPOXY SYSTEM APPROVED BY ENGINEER.
2. PREPARATION AND APPLICATION IN ACCORDANCE WITH PAINT MANUFACTURER'S INSTRUCTIONS.
3. COLOR SAMPLES TO BE FURNISHED WITH PROPOSED SYSTEM DATA FOR OWNER'S SELECTION.

* SLOPED CONCRETE APRON IS NOT INCLUDED OR NECESSARY IF THE STEEL PIPE RAILING IS NOT CONSTRUCTED.