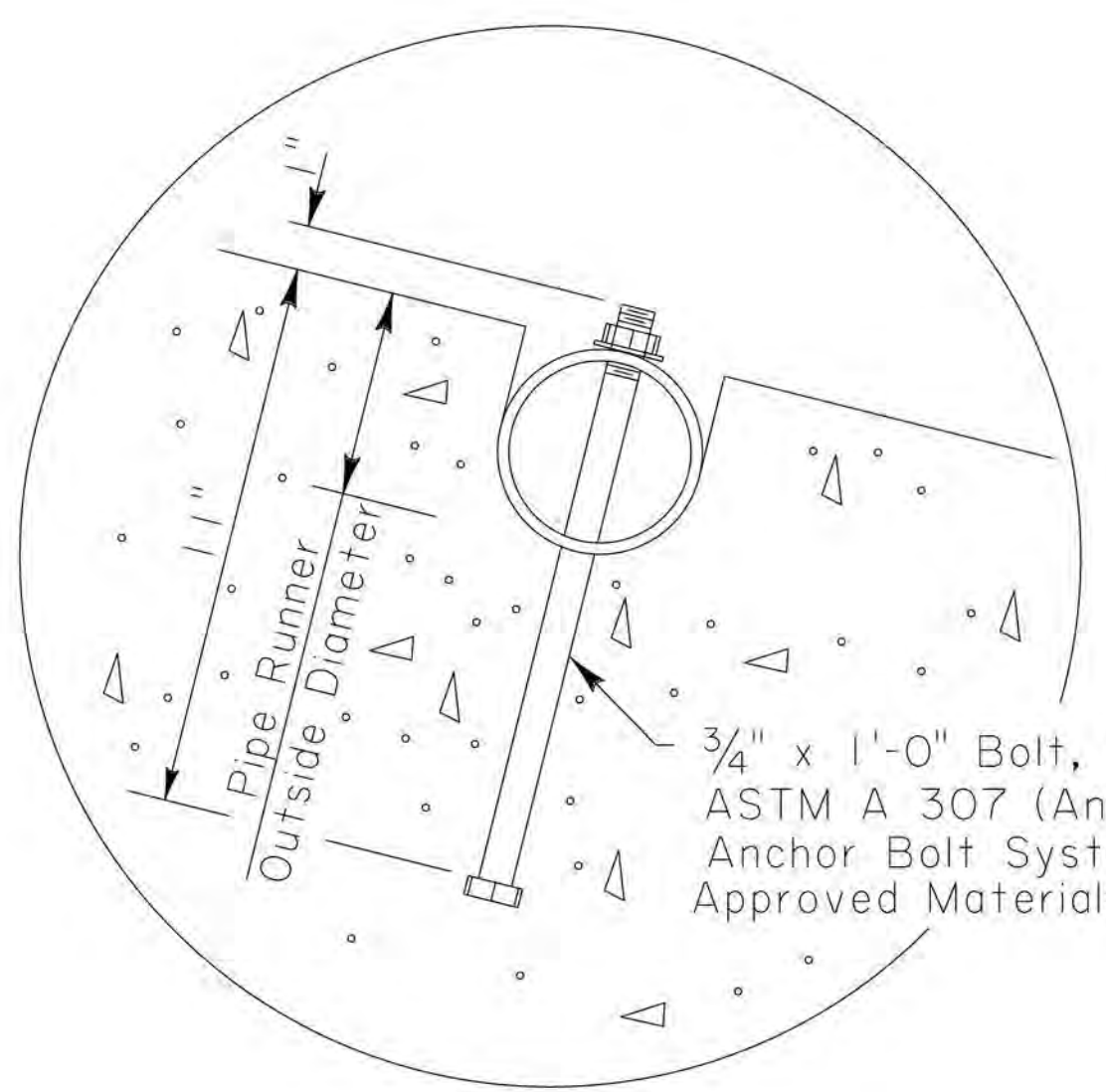
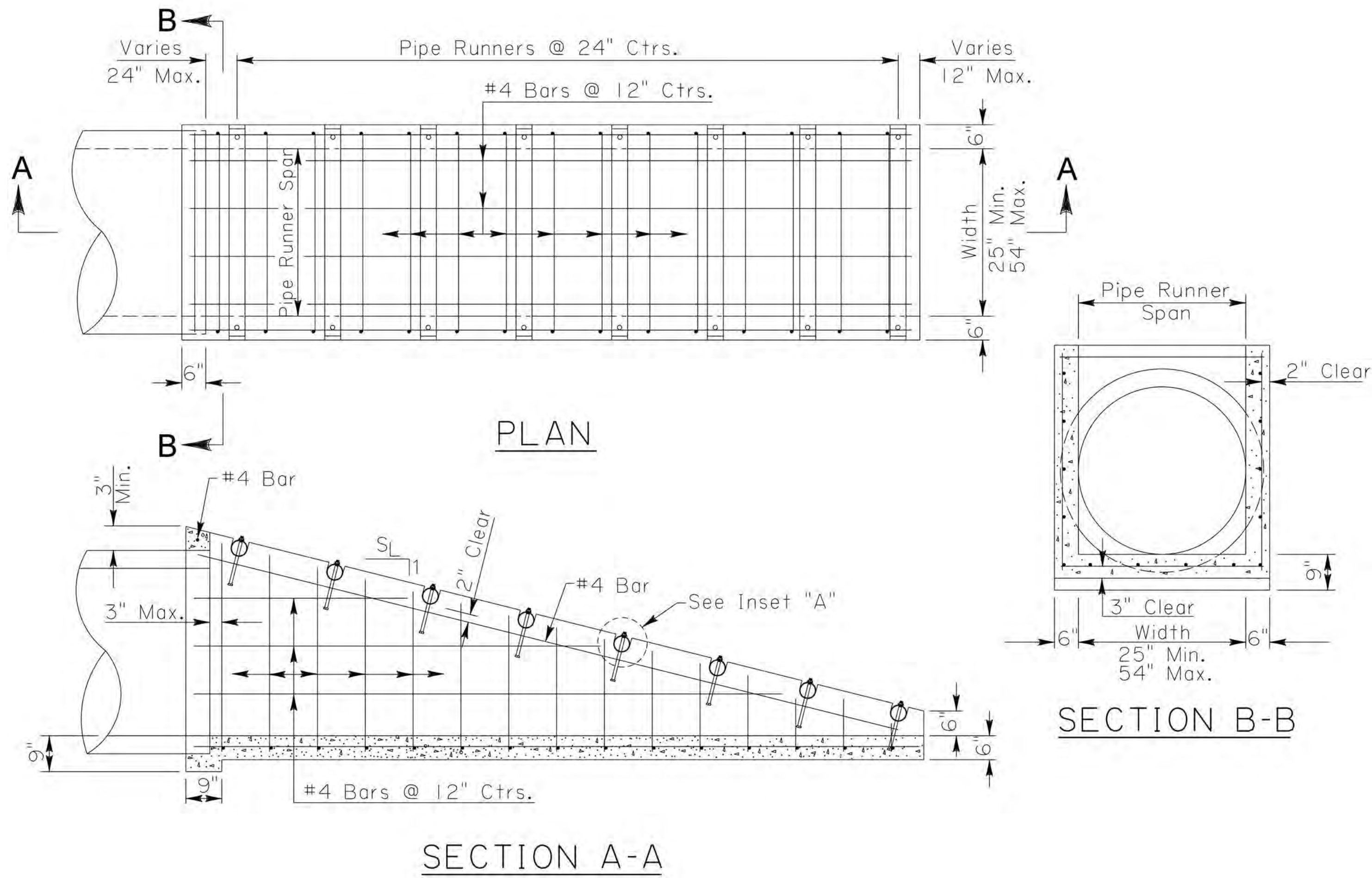


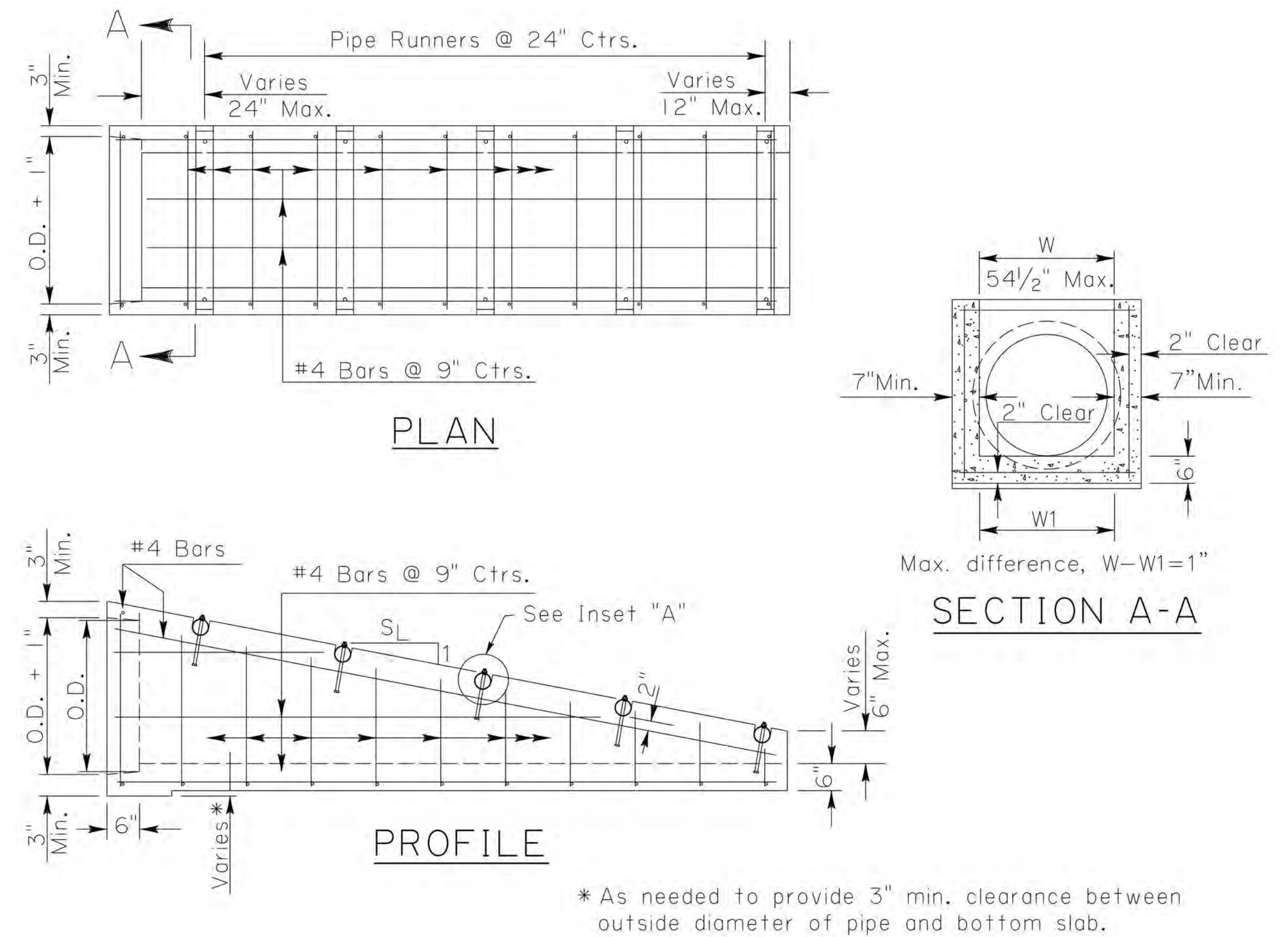
CAST-IN-PLACE ALTERNATE



PRECAST ALTERNATE

Notes:

1. Concrete to be 4000 psi & reinforcing steel to be Grade 60.
2. An 8" Concrete Collar is required at the connection between the Safety End and the RCP.
3. Pipe connections shall be sealed with flexible gasket material.



General Notes: (Cast-In-Place & Precast)

- 1) While a RCP culvert is detailed, this Safety End shall also be used with RCPA, CAP, CAPA, PVC and RCB culverts. Multiple culverts will require multiple ends.
- 2) Slope of Safety End Walls (S_L:1) shall match the required sideslope. If no sideslope is given, a slope of 6:1 shall be required.
- 3) Pipe Runners shall be galvanized steel pipe conforming to ASTM A53, Type E or S, Grade B, 35ksi; or ASTM A501, 36ksi. Required Pipe Runner diameters and strengths for various maximum spans are:

Nominal Diameter	Strength/Schedule	Maximum* Span	Outside Diameter	Wall Thickness	Weight Per Foot
3"	Std/40	11'-2"	3.5"	0.216"	7.58 lbs

*Pipe Runners are designed for a traversing load of 1800 pounds at yield.

- 4) Side Drain Safety Ends may be provided as cast-in-place or precast, and shall be in accordance with Section 702 of the Lafayette Consolidated Government 2016 Standard Specifications.
- 5) RCP bell ends which exceed the normal pipe outside diameter (O.D.) shall be removed.
- 6) Exposed corners shall be chamfered 3/4".