

THIS SPACE INTENTIONALLY LEFT BLANK

Table of Contents

LAFAYETTE PARISH EMERGENCY OPERATIONS PLAN..... 4

PROMULGATION STATEMENT 4

RECORD OF CHANGES..... 5

RECORD OF DISTRIBUTION 6

I. Purpose and Scope..... 7

 Purpose 7

 Mission 7

II. SITUATION AND ASSUMPTIONS 8

 Situation:..... 8

 Assumptions:..... 9

III. CONCEPT OF OPERATIONS..... 10

 General..... 10

 National Incident Management System – Command and Management – Incident Types 13

 Phases of Emergency Management 14

IV. ORGANIZATION AND ASSIGNMENT OF RESPONSIBILITIES..... 15

 Organization..... 15

 Responsibilities 15

 Mayor-President 15

 Office of Homeland Security and Emergency Management 15

 Sheriff and Municipal Law Enforcement 16

 Parish and Municipal Fire Departments 16

 Emergency Medical Services/Acadian Ambulance..... 17

 Lafayette Parish School System 17

 Parish and Municipal Purchasing Personnel..... 17

 Parish and Municipal Public Works and Engineering Department..... 17

 Parish and Municipal Water and Wastewater Districts..... 18

 Lafayette City-Parish Attorney..... 18

District Attorney’s Office 18

Lafayette Consolidated Government PARC Department 18

Lafayette Consolidated Government IS & IT 19

Lafayette Consolidated Government Juvenile Detention Department..... 19

Lafayette Consolidated Government Community Development and Planning 19

Lafayette Consolidated Government Animal Shelter and Care Center..... 19

Office of Public Health-Lafayette Parish Health Unit 19

Coroner’s Office 19

University of Louisiana at Lafayette 20

Lafayette Consolidated Government International Center 20

Support Functions- LANG, LAVOAD, Acadiana VOAD..... 20

American Red Cross 20

Parish and Municipal Utilities Systems 21

Telephone Service /LFTFiber/AT&T/Verizon/COX/Others 21

 Damage Assessment Officer 21

 Emergency Support Function (ESF) Assignment of Responsibilities Chart..... 22

V. DIRECTION AND CONTROL..... 25

 Authority to Initiate Actions 25

VI. Continuity of Government 25

VII. Administration and Logistics..... 26

VIII. PLAN DEVELOPMENT AND MAINTENANCE 28

IX. APPENDICES 28

LAFAYETTE PARISH EMERGENCY OPERATIONS PLAN

PROMULGATION STATEMENT

Transmitted herewith is the All-Hazard Emergency Operations Plan (EOP) for Lafayette Parish. This plan supersedes any previous Emergency Operations Plan promulgated for this purpose. It provides a framework in which the Lafayette City-Parish Consolidated Government, and its political subdivisions can plan and perform their respective functions during an Emergency.

Included in the context of this All-Hazard Emergency Operations Plan, is the authority and responsibility for direction and control of the resources of Lafayette Parish by responding agencies, when operating as members of the Emergency Operation organization.

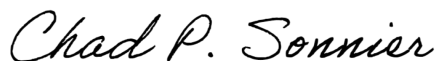
This plan is in accordance with existing Federal, State and Local statutes and understanding of the various agencies involved. This plan is in concurrence with the Lafayette Parish Office of Homeland Security and Emergency Preparedness, the Governor's Office of Homeland Security and Emergency Preparedness, and the Federal Emergency Management Agency. It will be reviewed and rectified biannually by the Lafayette Parish Office of Homeland Security and Emergency Preparedness, and every fourth year by the Governor's Office of Homeland Security and Emergency Preparedness. All recipients are requested to advise the Lafayette Parish Office of Homeland Security and Emergency Preparedness of any changes that might result in its improvement or increase its usefulness.

Date: June 26, 2025

Signatures:



Mayor-President
Lafayette Consolidated Government



Director, Lafayette Parish Office of Homeland Security
and Emergency Preparedness

RECORD OF DISTRIBUTION

Name and Title	Agency	Date	Number of Copies
Chad Sonnier, Director	Lafayette Parish OHSEP	6/26/2025	1
Monique B. Boulet, M-P Rachel Godeaux, CAO Christina Dayries, COS	Mayor-President's Office Lafayette Consolidated Government	6/26/2026	3
WebEOC Upload	GOHSEP	6/26/2026	1

I. PURPOSE AND SCOPE

Purpose

It is the purpose of this plan to provide guidance for the various departments within Lafayette City-Parish Consolidated Government (LCG), where applicable, and all of those outside agencies within the Parish of Lafayette with an emergency assignment before, during, and following any critical incident and/or emergency. The plan details the overall responsibilities of local government as well as guidelines and organizational priorities necessary to ensure a coordinated federal, state, and local government response. This plan sets forth a detailed parish program of preparation for, operation during, and relief and recovery following disasters as provided by parish, state, and federal statutes, regulations, executive orders and ordinances, as well as other related or applicable emergency authorities or directives. The Emergency Operations Plan (EOP) is designed to coordinate closely with the National Response Framework (NRF) and State of Louisiana Emergency Operations Plan. It establishes a base on which further plans, procedures, guidelines, arrangements, and agreements can be elaborated. From this point further, the Governor's Office of Homeland Security and Emergency Preparedness shall be referred to as GOHSEP.

Mission

In times of emergency, the mission of the Lafayette City-Parish Consolidated Government is:

- To plan and prepare practicable response programs for the protection of life and property in the event of disasters.
- To take immediate effective action to direct, mobilize, coordinate and determine utilization of local resources in the conduct of disaster operations to save lives, protect property, relieve human suffering, sustain survivors and repair essential facilities.
- To coordinate and direct restoration and recovery operations in the disaster area subject to governmental authority.
- To ensure that each city-parish department and agency will plan and provide for an emergency operations capability which conforms in principle with this plan.
- To coordinate all disaster operations and services with the Homeland Security and Emergency Preparedness Director.

OVERVIEW

- Primary responsibility for disaster preparedness rests with elected heads of government, both local and state, in accordance with RS 29: 721-739; Louisiana Disaster Act.
- Existing organizational elements for emergency government response will be utilized to the fullest extent and augmented where necessary.
- This Emergency Operations Plan (EOP) will be in the Emergency Support Function (ESF) format. One or more agencies will be appointed as the "primary" for each ESF. They will work with "support" agencies within their ESF. It is imperative that the primary agency communicate with the support agencies to ensure information flows from OHSEP to all agencies.
- Assistance to overcome the effects of a disaster must be provided as soon as possible after its occurrence. Therefore, local response elements and state government will perform urgently needed

emergency work immediately. NOTE: Possible reimbursement by the Federal Government for emergency work, restoration or replacement is contingent only upon a Presidential Declaration implemented under Public Law 93-288, Part II (Disaster Relief Act of 1974). It is the purpose of this Plan to cover all aspects of local response only, not contingent on any extraordinary state or federal assistance.

- All parish response elements will include provisions for necessary documentation for financial accountability from the onset of any disaster occurrence. The fact that emergency conditions exist does not preclude the need for documentation required by current disaster assistance regulations and directives.
- It shall be the responsibility of all parish response elements of government to:
 - Control and use to the fullest extent all able manpower and material resources subject to the authority of the government entity.
 - Control and use to the fullest extent all manpower and material resources available in the general area of devastation by means of interagency cooperation.
 - Notify the Office of Homeland Security & Emergency Preparedness Director of any deficiencies that exist.

All response elements of local government will adhere to the above general principles.

II. SITUATION AND ASSUMPTIONS

Situation:

- Lafayette Parish is located in south central Louisiana, with a total population of 241,753 and encompasses approximately 279 square miles of land. The Parish of Lafayette is adjacent to St. Landry, St. Martin, Iberia, Vermilion, and Acadia Parishes.
- Lafayette Parish has within its borders 6 incorporated communities:
 - Broussard
 - Carencro
 - Duson
 - Lafayette
 - Scott
 - Youngsville
- The University of Louisiana at Lafayette is located in Lafayette Parish, within the City of Lafayette. Student enrollment is in excess 19,000.
- South Louisiana Community College is located in Lafayette Parish, within the City of Lafayette. Student enrollment is in excess of 7,000.
- Lafayette Parish's hazard analysis study indicates that its entire population is vulnerable to many hazards, both natural and technological, that could individually or in a combination thereof, result in conditions that warrant a coordinated emergency response and an emergency or disaster declaration by the Mayor-President. The hazards include:

Natural Hazards:

- **Weather**
 - Thunderstorms
 - Tornadoes
 - Wintry Weather
 - Drought
 - Tropical Cyclone/Hurricanes
- **Floods**
 - Urban and Small Stream
 - River
 - Flash
- **Wildfire**
- **Infectious Disease/Pandemic**
- **Earthquakes**

Technological/Human Caused Hazards

- **Hazardous materials**
 - Fixed Sites
 - Transportation
 - Roadway
 - Pipeline
 - Waterways
 - Air
- **Transportation accidents**
- **Terrorism**
- **Bridge collapse**
- **Civil disturbance/Large Gatherings**
- **Cyberattack**

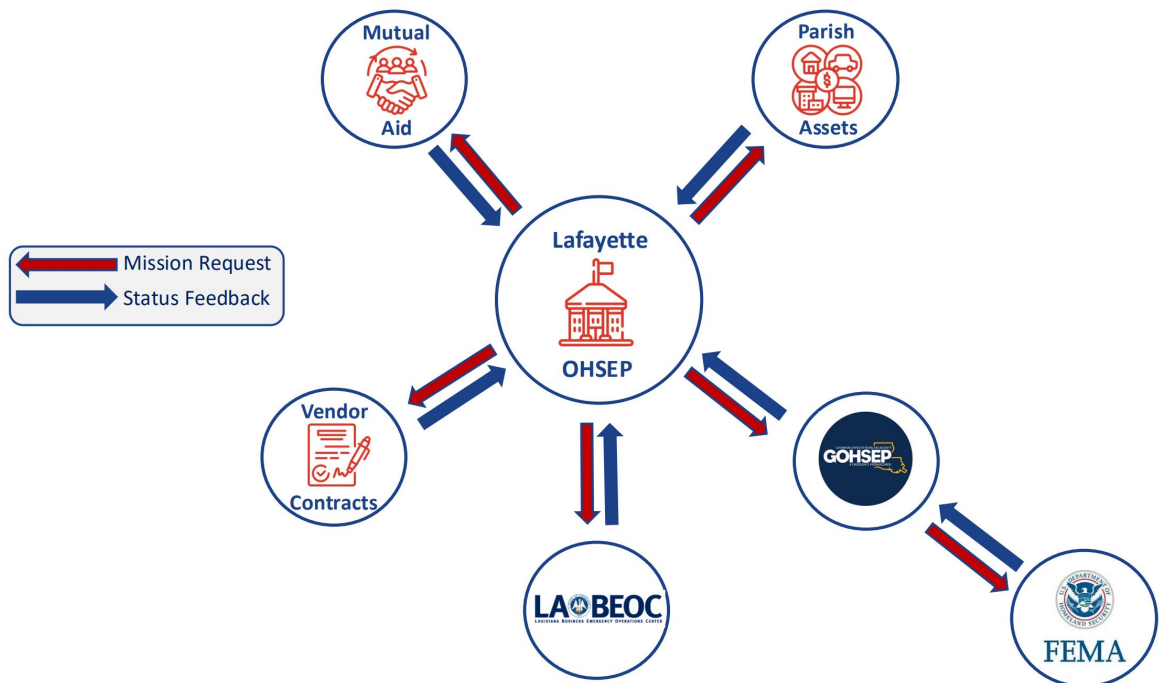
Assumptions:

- It is impossible to predict the specific effects of a disaster upon Lafayette Parish, or to be sure in advance that any specific hazard may or may not occur. However, the parish may be subject to numerous disaster situations.
- All equipment necessary to provide a coordinated mitigation, preparedness, response, and recovery effort from local, state, and federal government is functional and available as quickly as possible to the extent of the emergency.
- Actions to minimize the effects of any disaster will be conducted by Lafayette Parish officials from the Emergency Operations Center (EOC) and affected public and private agencies.
- The Lafayette Parish EOC is available and located at 1810 W. Willow St., Scott, LA 70583.

III. CONCEPT OF OPERATIONS

General

Locally, under the Incident Command System (ICS) structure, the Mayor-President is responsible for Emergency Operations within Lafayette Parish. The director of the Lafayette Parish Office of Homeland Security and Emergency Preparedness will act as the Operations Chief and will receive guidance and direction from the Mayor-President. Lafayette Consolidated Government department directors and agency leaders are responsible for functions specified in this plan. Parish forces will conduct emergency operations until the emergency exceeds the local government’s capability to respond. Assistance will be requested from the state as necessary. The federal government will provide assistance to the State, when appropriated. Operations shall be conducted from the Parish (EOC) and all ESFs will be represented by the primary agency(s) and maintain communications with partner agencies.



- This plan is based upon the concept that emergency functions for various groups involved in emergency preparedness will generally parallel their normal day-to-day functions. It is desirable, and always attempted, to maintain organizational continuity and to assign familiar tasks to personnel.
- In large-scale disasters it may be necessary to draw on people’s basic capabilities and use them in areas of greatest need. Day-to-day functions that do not contribute directly to the emergency operations may be suspended for the duration of any emergency. Efforts that would normally be required of those functions will be redirected to accomplish the emergency task.
- Consideration will be given to the needs of Medical Special Needs patients.

- In keeping with the nationwide strategy of the National Response Framework (NRF), this guidance is concerned with all types of emergency situations that may develop. It also accounts for activities before, during, and after emergency operations.
- The use of the National Incident Management System (NIMS) will be utilized by all emergency response agencies to manage an emergency/disaster. The nature and size of the incident will determine the level and complexity of the Lafayette Parish management structure. NIMS is designed to expand or be reduced as needed. As an incident escalates, the span of control may become stretched. Under the NIMS, the following command structure will be established and expanded as dictated by the event.
 - Command or the Incident Commander – responsible for overall coordination and direction of all activities at the incident scene. The four (4) major responsibilities are:
 - ✓ Control the Incident
 - ✓ Provide safety and survival for emergency responders
 - ✓ Protect, remove, and provide care for endangered civilians
 - ✓ Conserve property during and after the incident control operations.
 - Command Staff – responsible for key activities, which are not part of the line organization. Command Staff answers directly to the Incident Commander.
 - Safety Officer – assesses hazards and safety of the situation and develops measures for assuring personnel safety.
 - Public Information Officer (PIO) – develops accurate and complete information regarding incident cause, size, current situation, resources committed and other matters of general interest that are cleared for public release. The PIO is the point of contact for the media. Upon approval of Command, the PIO coordinates and disseminates the government’s calls for public actions such as evacuations or sheltering in place.
 - Liaison – serves as the point of contact for representatives from other agencies.
 - Finance/Administration Section is established on incidents when there is a specific need for financial services. Procurement services needed to terminate the incident and document the financial cost of the incident.
 - Logistics Section provides services and support systems to all the organizational components involved in the incident.
 - ✓ Provide medical aid for responders/rest and rehabilitation
 - ✓ Coordinate stress debriefing
 - ✓ Provide supplies and equipment
 - ✓ Secure needed facilities
 - Operations Section will function in the command post. The Operations Chief is responsible for implementing the tactical objectives as defined by the strategic goals of the Incident Commander.

- ✓ Assign line crews
- ✓ Keep command informed.
- Planning Section is responsible for processing information needed for effective decision making.
 - ✓ Evaluate and update the current strategic plan with Command and Operations
 - ✓ Evaluate past actions and strategies
 - ✓ Refine current and future plans and recommend any changes to Command and Operations
 - ✓ Forecast possible outcomes
 - ✓ Evaluate future resource needs with Operations

EMERGENCY CLASSIFICATION AND EMERGENCY ACTION LEVELS (EAL)

The Standardized Emergency Classification System exists to standardize terminology among all emergency response organizations to express the severity of emergencies and provide the framework for a unified response. Additionally, it provides the foundation for the implementation and institutionalized processes, systems, procedures, and/or plans to ensure effective cross-jurisdictional coordination between multiple local ICS organizations responding to an incident covering a large geographical area.

EOC Activation Level	Definition
1 Normal Operations	Steady State / Monitoring: EOC Staff will work as normal operations are ongoing.
2 Potential Threat	Alert/Monitoring Status: Events involve a potential or actual threat to the safety and welfare of the people in a threatened area(s). Lafayette Parish OHSEP/EOC Staff is on alert and monitoring for additional information and will adjust activation level accordingly.
3 Event in Progress	Partial Activation: Events are in progress or have occurred involving an imminent or actual impact on the safety of the people in a stricken area(s). The EOC begins operations with select ESFs in a partial activation.
4 Response Activities – Full Activation	Full Activation: Events are in progress and require all support mentioned in the above EAL's. Parish and agencies/departments assigned to the Lafayette Parish OHSEP EOC or hold a seat within the Unified Command Group (UCG) are required to report to the EOC to support operations. This status will continue until any potential threat(s) have been eradicated and the emergency is terminated. As the threat or actual danger decreases, proper re-deployment activities will take place so as to allow Parish Agencies and/or departments to return to normal operations as quickly and effectively as possible.

National Incident Management System – Command and Management – Incident Types

Incident Complexity Types

- **Type 5**
 - The incident can be handled with one or two single resources with up to six personnel.
 - Command and General Staff positions (other than the Incident Commander) are not activated.
 - No written Incident Action Plan (IAP) is required.
 - The incident is contained within the first operational period and often within an hour to a few hours after resources arrive on scene.
 - Examples include a vehicle fire, an injured person, or a police traffic stop.

- **Type 4**
 - Command staff and general staff functions are activated only if needed.
 - Several resources are required to mitigate the incident, including a Task Force or Strike Team.
 - The incident is usually limited to one operational period in the control phase.
 - The agency administrator may have briefings and ensure the complexity analysis and delegation of authority are updated.
 - No written IAP is required but a documented operational briefing will be completed for all incoming resources.
 - The role of the agency administrator includes operational plans including objectives and priorities.

- **Type 3**
 - When capabilities exceed initial incident, the appropriate ICS positions should be added to match the complexity of the incident.
 - Some or all of the Command and General Staff positions may be activated, as well as Division/Group Supervisor and/or Unit Leader level positions.
 - A Type 3 Incident Management Team (IMT) or incident command organization manages initial action incidents with a significant number of resources, an extended attack incident until containment/control is achieved, or an expanding incident until transition to a Type 1 or 2 team.
 - The incident may extend into multiple operational periods.
 - A written IAP may be required for each operational period.

- **Type 2**
 - This type of incident extends beyond the capabilities for local control and is expected to go into multiple operational periods. A Type 2 incident may require the response of resources out of area, including regional and/or national resources, to effectively manage the operations, command, and general staffing.
 - Most or all of the Command and General Staff positions are filled.
 - A written IAP is required for each operational period.
 - Many of the functional units are needed and staffed.
 - Operations personnel normally do not exceed 200 per operational period and total incident personnel do not exceed 500 (guidelines only).

- The agency administrator is responsible for the incident complexity analysis, agency administrator briefings, and the written delegation of authority.
- **Type 1**
 - This type of incident is the most complex, requiring national resources to manage and operate safely and effectively.
 - All Command and General Staff positions are activated.
 - Operations personnel often exceed 500 per operational period and total personnel will usually exceed 1,000.
 - Branches need to be established.
 - The agency administrator will have briefings and ensure that the complexity analysis and delegation of authority are updated.
 - Use of resource advisors at the incident base is recommended.
 - There is a high impact on the local jurisdiction, requiring additional staff for office administrative and support functions.

Phases of Emergency Management

Mitigation

Mitigation activities are actions to reduce loss of life and property by lessening the impact of disasters. FEMA defines mitigation as any sustained action that reduces or eliminates long term risk to people and property from natural hazards and their effects. Mitigation actions and programs involve lasting, often permanent, reduction of exposure to, probability of, or potential loss from hazard events. Some examples include establishment of building codes, flood plain management, insurance, elevating buildings, and public education programs. The mitigation strategy will be directed by parish and municipal leaders as recommended by department directors and staff and is discussed further in the Lafayette Parish Hazard Mitigation Plan (HMP).

Preparedness

Preparedness activities serve to develop the response capabilities needed in the event of an emergency. Planning, exercising, training, and developing public information programs and warning systems are among the activities conducted under this phase.

- The Lafayette Office of Homeland Security and Emergency Preparedness is the primary agency for preparedness efforts.
- All city-parish agencies and departments are responsible for preparedness efforts and maintaining internal plans. This may include, but is not limited to the following:
 - Internal procedures
 - Training of personnel
 - Participation in exercises and drills
 - Stockpile of materials and supplies needed to carry out their emergency responsibilities
 - Public information and awareness.
- This plan, its supporting procedures and other procedures are tested on a regular basis.

Response

Response activities help to reduce casualties and damage and speed recovery. These include warning, evacuation, rescue, and other similar operations. During the response phase, emergency services are provided.

Recovery

Recovery includes both short-term and long-term activities. Short-term operations seek to restore critical services to the community and provide for the basic needs of the public. Long-term recovery focuses on restoring the community to its normal or improved state of affairs. The recovery period is also an opportune time to institute mitigation measures, particularly those related to the recent emergency. Examples of recovery actions would be temporary housing and food, restoration of non-vital government services, and reconstruction of damaged areas.

IV. ORGANIZATION AND ASSIGNMENT OF RESPONSIBILITIES

Organization

Most departments/agencies of government have emergency functions in addition to their normal, day to day duties. These emergency functions usually parallel or complement normal functions. Each department/agency is responsible for maintaining its own emergency management procedures. Specific primary and support functions are outlined in roles and responsibilities and overlap with those in each annex.

Departments/agencies of government that provide response personnel should maintain Standard Operating Procedures (SOP) which include description of:

- The specific emergency authorities to be assumed by a designated successor
- When these authorities would become effective
- When the delegated authorities would be terminated

Responsibilities

Mayor-President

- Assumes responsibility for the overall preparation, response and recovery operations.
- Appoints an individual as the Lafayette Parish Office of Homeland Security and Emergency Director.
- Declares a state of emergency or disaster or other emergency declarations within Lafayette Parish.

Office of Homeland Security and Emergency Management

- Manages the Emergency Operation Center as a physical facility (e.g., layout and set-up), oversees its activation, and ensures it is staffed to support response.
- Ensure that plans are updated, and exercises are conducted.
- Receives and disseminates warnings.
- Conducts hazard analysis for its jurisdiction.
- Coordinates shelter operations.
- Plans for and coordinates evacuation operations.

- Oversee the planning and development of procedures to accomplish the emergency communications function during emergency response.
- Oversees and maintains updated listings, including phone numbers of emergency response personnel to be notified of emergency situations.
- Designates one or more facilities to serve as the jurisdictions' alternate Emergency Operation Center.
- Ensures that communications, warning, and other necessary operations support equipment is readily available for use in the alternate Emergency Operations Center.
- Coordinates volunteer support efforts for local, state and national volunteer groups.
- Works with the Public Information Officer to develop emergency information packets and emergency instructions for the public.
- Coordinates planning with the emergency management staff in state agencies and neighboring jurisdictions.
- Coordinates the provision of mass care needs for personnel performing medical duties during catastrophic emergencies.
- Advocates that mitigation concerns be addressed appropriately during response and recovery operations.
- Coordinates damage assessment.

Sheriff and Municipal Law Enforcement

- Responsible for advising the Parish on public safety matters.
- Maintain law and order.
- Protecting vital installations (PODs, reception/staging areas, shelters, etc.)
- Controlling traffic and providing access control.
- Supplement parish communications.
- Assist with public alert / notification.
- Assists with implementation of protective actions measures.
- Coordinates open Search and Rescue.
- Assist with evacuation orders (escorting and traffic control)

Parish and Municipal Fire Departments

- Fire suppression and protection.
- Augmentation of warning system.
- Supplement Emergency Medical Response.
- Hazardous-materials incident commander.
- Hazardous-materials response/decontamination.
- Coordinates Urban and Open search and rescue.
- Assist law enforcement with traffic control, if possible.
- Assists with damage assessment.
- Assist with public alert / notification.
- Coordinates open Search and Rescue.
- Provide incident commander and staff for parish pick up points and POD sites.
- Coordinate the Oxygen Distribution and Exchange Program.

Emergency Medical Services/Acadian Ambulance

- Coordinates with the OHSEP Director on planning, training and exercising.
- Emergency medical transportation
- Emergency medical treatment
- Assists facilities that provide care for special needs populations to develop a facility evacuation plan.

Parish and Municipal Public Information Officer

- Advises the elected officials and OHSEP Director on matters of emergency public information.
- Establishes and maintains a working relationship with local and national media outlets.
- Prepares a call-down lists for dissemination of emergency public information to normal media groups.
- Prepares emergency information release; distributes pertinent materials to local media and through social media prior to emergencies; and ensures that information needs of visually impaired, and non-English speaking audiences are met.
- Coordinates emergency public information with all ESF-15 support agencies.
- Centralize all public messaging/notifications.
- Update Lafayette Consolidated Government Civil Leave Hotline, 311 call center and website information.

Lafayette Parish School System

- Responsible for providing facilities for emergency shelter operations or recovery support operations
- Develops and periodically exercises a student shelter in place plan and an evacuation plan.
- Coordinates the use of school buses and operators for evacuations/emergency operations.
- Develop emergency plans for the transport of school children to shelters.
- Pre-identifies resources and buses to be used in emergency operations
- Responsible for coordinating and obtaining transportation resources to ensure the movements of people who need assistance in evacuating the risk area.
- Provides public facilities for sheltering.

Parish and Municipal Purchasing Personnel

- Maintaining fiscal stability as required through accounting and budgeting divisions.
- Maintain a list of suppliers, vendors, and items of critical emergency need.
- Provide for appropriate record keeping of parish expenditures during a state of emergency, as declared by the Parish President.
- Procurement, distribution and accountability of emergency supplies and equipment.

Parish and Municipal Public Works and Engineering Department

- Emergency and routine maintenance of emergency services equipment and facilities.
- Provide adequate fuel supplies for emergency situations.
- Responsible for coordinating debris clearance on parish roads and evacuation routes.

- Provide road clearing equipment, barricades and sandbags for use throughout the parish.
- Responsible for maintenance of vehicles and other essential equipment of various departments and agencies, both in the field and in the shop as the situation permits, including expedient tire repair.
- Coordinates with private sector utilities and contractors for use of private sector resources in Public Works – related operations.
- Provide personnel for damage assessment.
- Maintain water systems.
- If appropriate, may assist in the duties of other Parish agencies as appropriate.
- Develop a traffic signal plan for use during major evacuations, such as during a hurricane (Traffic/Roads/Bridges (TRB)).
- Coordinate the erection and maintenance of appropriate signage on evacuation routes (TRB).

Parish and Municipal Water and Wastewater Districts

- Maintain water system.
- Coordinate with outside agencies to provide water to the parish and/or municipality when the local water system is unavailable.
- Determine when the parish's water system is available after an emergency.
- If appropriate, may assist in the duties of Parish and other Municipal Public Works responsibilities.
- Provide for the continued operation of wastewater systems.
- Engineering services.
- Decontamination assistance.

Lafayette City-Parish Attorney

- Assist the Mayor-President in declaring and lifting the state of emergency/disaster and filing declaration with the Clerk of Court.
- Assisting the Mayor-President in declaring a curfew or other emergency declarations, and filing the declaration with the Clerk of Court.

District Attorney's Office

- Provides legal advice as required.
- Performs necessary legal functions.
- Liaison with other legal and judicial agencies as well as government agencies.

Lafayette Consolidated Government PARC Department

- Provide Heymann Performing Arts Center as use as a Medical Needs Shelter (MNS).
- Provide support staff and facility managers to shelter locations.
- Provide facilities to be used as emergency shelters, first aid stations, emergency hospitals or emergency morgue.
- Provide facilities to be used as Disaster Recovery Centers

Lafayette Consolidated Government IS & IT

- Provide IT and GIS services as requested.

Lafayette Consolidated Government Juvenile Detention Department

- Work with Juvenile Court System to release non-violent youths to custody of their legal guardians
- Under imminent threat of a catastrophic event, evacuate remaining housed youths, in coordination with Office of Juvenile Justice and the Lafayette Police Department, to a secured juvenile facility in another parish.

Lafayette Consolidated Government Community Development and Planning

- Responsible for damage assessment
- Provides personnel augmentation to Office of Homeland Security and Emergency Preparedness.
- Provides personnel augmentation to staff shelter operations.

Lafayette Consolidated Government Animal Shelter and Care Center

- Responsible for general animal control services
- Develops and updates Emergency Pet Plan.
 - Updated plans due to GOHSEP and LDAF by March 1 each year.
- Transports and shelters animals.
- Responsible for small animal issues to include rescue and disposal.

Office of Public Health-Lafayette Parish Health Unit

- Provide Emergency medical care centers.
- Provide Emergency hospital treatment.
- Provide medical support to Emergency Shelters.
- Supply medical supplies to shelters and medical treatment facilities.
- Facilitate emergency medical coordination.
- Provide RADEF monitoring to personnel and facilities as well as food and water supplies.
- Responsible for vector control.
- Responsible for providing inoculations when necessary.

Coroner's Office

- Responsible for developing and maintaining mass casualties' plan.
- Responsible for identification of morgue site as well as a staging area for coroner operations.
- Recovers and evacuates human remains.
- Identifies and documents human remains and file death certificates.
- Preserves/embalms remains.
- Catalogs and safeguards personal effects.
- Responsible for notification to next of kin or designated family representative

University of Louisiana at Lafayette

- Develops and exercises a campus evacuation plan.
- Provides alerts and notifications for students and campus personnel.
- Develops plan for sheltering and evacuation of students and staff.
- Provides University facilities for sheltering and other emergency operations.

Lafayette Consolidated Government International Center

- Assists in identifying housing and workspace for displaced foreign dignitaries.
- Assist emergency personnel and hospitals in finding translators.
 - Assist in translating emergency messages and announcements.
- Assist foreign governments in locating/contacting foreign nationals in the area.

Support Functions- LANG, LAVOAD, Acadiana VOAD

- Support by military units and the National Guard may be requested by the Lafayette Parish Office of Homeland Security and Emergency Preparedness Director through GOHSEP. Military assistance will complement and not be a substitute for local participation in emergency operations. Military forces will remain at all times under military command, but will support and assist local forces. Request for military assistance should be "mission" type including objectives, priorities and specific information related to the accomplishment of assignment within the parish.
- Support by state governed forces may be made available from the surrounding area in accordance with the State Plan.
- Louisiana Volunteer Agencies Active in Disasters (LAVOAD) through the Lt. Governor's Office will coordinate the efforts of volunteer groups and local governments to manage donations of goods and services as needed and will assist citizens with timely delivery of needed supplies and services.
- Acadiana Volunteer Agencies Active in Disasters (Acadiana VOAD) agencies such as 232-HELP (211), Acadiana Regional Center for Homeless, Catholic Charities of Acadiana, Second Harvest, Love Acadiana, and the Salvation Army are available to give assistance with sheltering, feeding, etc. as necessary.
- Lafayette Consolidated Government personnel and equipment may be sent to assist other political subdivisions within, as well as outside of the Parish of Lafayette upon authorization of the Mayor-President.

American Red Cross

- Provides emergency services such as sheltering, feeding, clothing and other essential needs of disaster victims.
- Assists in emergency registration and inquiry at shelters.
- Coordinates religious services.
- Coordinates mental health and crisis management services.
- Provides recreation plans for shelters.
- Provides water and snacks at Clifton Chenier Center pick up point during evacuations.
- Provides use of facilities for emergency public education.

Parish and Municipal Utilities Systems

- Communicates the current level of gas, electrical service, wastewater service, and water during a disaster as well as projections for full restoration with Lafayette Parish OHSEP.
- Responsible for supply of utilities as well as the repair and maintenance of all utilities.


Telephone Service /LFTFiber/AT&T/Verizon/COX/Others


- Operation of the fiber optic system and delivery of services.
- Restoration and maintenance of network infrastructure.
- Ensuring connectivity for all fiber-related resources to facilitate restoration during an emergency.


Damage Assessment Officer

- Coordinate damage assessment activities with parish and local governments, private utility functions, and the debris Contract Monitor in the recovery phase.

Emergency Support Function (ESF) Assignment of Responsibilities Chart

	ESF #1 – Transportation	ESF #2 – Communications & Cyber	ESF #3 – Public Works & Engineering	ESF #4 – Firefighting	ESF #5 – Emergency Management	ESF #6 – Mass Care, Housings and Human Services	ESF #7 – Resources Support	ESF #8 – Public Health and Medical Services	ESF #9 – Search and Rescue	ESF #10 Oil Spill, Hazardous Materials and Radiological	ESF #11 – Agriculture	ESF #12 – Energy and Utilities	ESF #13 – Public Safety and Security	ESF #14 – Long Term Community Recovery	ESF #15 – Emergency Public Information
	Lafayette Parish OHSEP	S	S	S	S	P	S	P	S	S	S	S	S	S	S
Acadian Ambulance	S	S		S	S			S	S	S					
Acadiana Transit	S														
Acadiana VOAD					S	S	S		S	S				S	S
Amateur & HAM Radio Services		S			S										
American Red Cross					S	S				S				S	
Atmos Energy												S			
Broussard Fire Dept.				S	S				S	S					
Broussard Police Dept.	S				S				S	S			S		
Broussard Public Works			S												
Broussard Water												S			
Carencro Fire Dept.				S	S				S	S					
Carencro Police Dept.	S				S				S	S			S		
Carencro Public Works			S												
Carencro Utilities												S			
Cellular Providers (ATT, Verizon, Motorola)		S			S										
Delta Utilities												S			
Duson Fire Dept.				S	S				S	S					
Duson Police Dept.	S				S				S	S			S		
Duson Public Works			S												
Duson Water												S			
Entergy				S								P			
Judice Fire Dept.				S					S	S					
Lafayette City Marshal						S			S				S		
Lafayette Economic Development Authority														S	
Lafayette Parish 911 District		P		S	S										
Lafayette Parish Coroner					S			S							
Lafayette Parish District Attorney's Office					S								S		
Office of Public Health					S			P			S	S			
Lafayette Parish School System	S				S	S				S					S
Lafayette Parish Sheriff Office	S	S			S				S	S			P		S

	ESF #1 – Transportation	ESF #2 – Communications & Cyber	ESF #3 – Public Works & Engineering	ESF #4 – Firefighting	ESF #5 – Emergency Management	ESF #6 – Mass Care, Housings and Human Services	ESF #7 – Resources Support	ESF #8 – Public Health and Medical Services	ESF #9 – Search and Rescue	ESF #10 Oil Spill, Hazardous Materials and Radiological	ESF #11 – Agriculture	ESF #12 – Energy and Utilities	ESF #13 – Public Safety and Security	ESF #14 – Long Term Community Recovery	ESF #15 – Emergency Public Information
	Lafayette Parish Waterworks District North												S		
Lafayette Parish Waterworks District South												S			
Lafayette Regional Airport	S			S	S										S
LCG-Animal Shelter & Care Center	S				S	S					P				S
LCG-Community Development & Planning	S				S	S								P	S
LCG-Finance and Management							P							S	S
LCG-Innovation and Technology		P													S
LCG-Lafayette Fire Dept.				P	S	S			P	P					S
LCG-Lafayette Police Dept.	S	S			S	S			S	S			P		S
LCG-Lafayette Utilities System (Utility, Water, Sewage)			S	S	S							P			S
LCG-Legal Counsel					S								S		
LCG-LFT Fiber		S	S									S			S
LCG-Parks, Arts, Recreation & Culture						P	S								S
LCG-Communications & Media															P
LCG-Public Works	S		P		S		S			S		S			S
LCG-Traffic, Road, and Bridges					S					S					S
LCG-Transit Operations	P				S										S
Magnolia Water												S			
Milton Fire Dept.				S					S	S					
Milton Water District												S			
Ochsner Lafayette General					S			S		S					
Our Lady of Lourdes					S			S		S					
Public Service Commission												P			
Scott Fire Dept.				S	S				S	S					
Scott Police Dept.	S				S				S	S			S		
Scott Public Works			S												

	ESF #1 – Transportation	ESF #2 – Communications & Cyber	ESF #3 – Public Works & Engineering	ESF #4 – Firefighting	ESF #5 – Emergency Management	ESF #6 – Mass Care, Housings and Human Services	ESF #7 – Resources Support	ESF #8 – Public Health and Medical Services	ESF #9 – Search and Rescue	ESF #10 Oil Spill, Hazardous Materials and Radiological	ESF #11 – Agriculture	ESF #12 – Energy and Utilities	ESF #13 – Public Safety and Security	ESF #14 – Long Term Community Recovery	ESF #15 – Emergency Public Information
	Scott Utilities												S		
SLEMCO				S	S							S			
UL Lafayette Police Dept.	S												S		
Youngsville Fire Dept.				S					S	S					
Youngsville Police Dept.	S				S				S	S			S		
Youngsville Public Works			S												
Youngsville Utilities												S			
LA Department of Children and Family Services					S	S		S							
LA Dept of Agriculture and Forestry											S				
LA Dept. of Ag. / Lafayette Parish County Agent											S				
LA Dept of Wildlife and Fisheries					S				S				S		
LA Dept of Environmental Quality															
LA DOTD	S		S		S										
LA Fire Marshal				S	S				S						
LA National Guard					S				S				S		
LA State Police	S				S					S			S		
SLCC															S
UL Lafayette PIO															S

V. DIRECTION AND CONTROL

The Lafayette Mayor-President has the responsibility for direction and control over parish wide local activities related to general emergency management. Through delegation of this authority, the Lafayette Parish Office Homeland Security and Emergency Preparedness Director acts in his behalf in coordinating and executing local activities to cope effectively with the situation.

Authority to Initiate Actions

It is provided that this plan:

- Is the official operations source for the Parish of Lafayette, governing and otherwise pertaining to all disasters related to administrative and operational tasks of the Parish.
- Is authorized by and promulgated under the authority contained by those local, state, and federal statutes listed herein.
- Has the occurrence of GOHSEP, and by that authority, the concurrence of all other branches of the State Government that operate under their direction and/or coordination under Public Law 93-288 and Louisiana and the Louisiana Emergency Assistance and Disaster Act of 1993 – Act 800.

It is understood that all Lafayette Consolidated Government departments and other local political subdivisions are an integral part of this plan.

They exist as part of the planning elements:

- Specifically named departments with specific responses.
- All other departments of parish government, which by virtue of their association constitute a large reserve of material and manpower resources. At the direction of the Mayor-President, such departments and agencies may be requested to supplement specifically assigned disaster response roles vital to the well-being of the Parish.

The Lafayette Parish Unified Command Group is aware of its responsibility to provide accurate and timely information to the public, especially in times of emergency. The mechanism by which this service is provided is fully addressed in ESF-15.

VI. CONTINUITY OF GOVERNMENT

Effective comprehensive emergency management operations depend upon two important factors to ensure continuity of government from the highest to the lowest level: (1) Lines of succession for officials/agency heads/authorized personnel; and (2) Preservation of records.

Succession of Command

- The Lafayette City-Parish Charter provides for Government succession should the office of the Mayor-President become vacant for any reason.

Relocation of Government

- During times of emergencies/disasters, as may be necessary, the City-Parish government essential emergency functions may relocate as needed.

Preservation of Records

- Each agency/department is responsible for maintaining and recording all legal documents affecting the organization and administration of emergency management functions. It is the further responsibility of local officials to ensure that all records are secure and protected from elements of damage or destruction at all times. It is the responsibility of the elected officials to ensure that all legal documents of both a public and private nature recorded by the designated official (i.e. Tax Assessor, Sheriff's Office) be protected and preserved in accordance with applicable state and local laws. Examples include ordinances, resolutions, minutes of meetings, land deeds, and tax records.

VII. ADMINISTRATION AND LOGISTICS

Agreements and Understandings

- Should local government resources prove to be inadequate during emergency operations; requests will be made for assistance from other local jurisdictions, higher levels of government, and other agencies in accordance with existing or emergency negotiated mutual aid agreements and understandings. Such assistance may take the form of equipment, supplies, personnel, or other available capabilities. Agreements are not required with State or Federal agencies.

Emergency Purchasing

- Lafayette Consolidated Government procedures provide for the purchasing of emergency equipment and supplies. Authorization for emergency purchases will be directed by the Mayor-President or designee.

Records and Reports

- Responsibility for submitting local government reports to GOHSEP rests with the Lafayette Parish Office of Homeland Security and Emergency Preparedness.
- Records of expenditures and obligations in emergency operations are to be kept by each agency/department.
- Narrative and log-type records of response actions to all emergencies/disasters are to be kept by each agency/department.
- FEMA NIMS ICS forms will be used for reporting. These forms can be found in ICS Forms Booklet FEMA 502-2. (<https://training.fema.gov>)

Emergency Operations Center (EOC)

- The Lafayette EOC located at 1810 W. Willow St., Scott, LA, is the primary site for all emergency operations. Facilities include an emergency operations room, 911-communications room, 911 staff bunking, common feeding and restroom areas, women's showers, small conference room, and limited OHSEP office space. In the event the EOC should become unusable, the Carencro Police Department EOC will serve as the alternate EOC.

Relief Assistance

- In the event of a disaster, Lafayette Parish Office of Homeland Security and Emergency Preparedness coordinates and supports the responsible agencies.

Consumer Protection

- Consumer complaints pertaining to alleged unfair or illegal business practices will be referred to the Fifteenth Judicial District Attorney's Office.

Administration of Insurance Claims

- Non-governmental insurance claims are normally handled on a routine basis by the commercial insurance companies and their adjustment agencies.
- Complaints should be referred to the Louisiana Insurance Commissioner. A representative of the American Insurance Association is usually dispatched to a disaster area to assist with claim problems

Use of Local Firms

- When major disaster assistance activities are carried out by contract or agreement with private organizations, firms, or individuals, preference will be given, to the extent feasible and practicable, to those organizations, firms, and individuals residing or doing business primarily in the affected area

Duplication of Benefits

- No person, business concern, or other entity will receive assistance with respect to any loss for which he/she has received financial assistance under any other program or for which he/she has received insurance or other compensation.

Preservation of Historic Properties

- In The event of a disaster involving known historic properties in Lafayette Parish, the City Parish Department of Community Development in coordination with the State Historical Preservation Officer will identify said historic properties within the designated disaster area for public assistance purposes.

Resources and Disaster Relief

- State agencies are expected to assist local efforts after local resources are deemed insufficient.
- Federal and state disaster assistance will supplement, not substitute, any relief provided by the parish. Possible reimbursement by the Federal Government for emergency work, restoration or replacement is contingent only upon a Presidential Declaration implemented under Public Law 93-288, Part II. It is the purpose of the Basic Plan to cover all aspects of local response only, not contingent on any extraordinary state or federal assistance.
- Support by military units and the National Guard may be requested through the GOHSEP by the Director of the Office of Homeland Security and Emergency Preparedness. Military assistance will complement parish participation in an emergency response. Military forces will remain at all times under military command but will support and assist parish forces. Request for military services

should be “mission” oriented and include objectives, priorities and specific information to accomplish assignments within the parish,

- Lafayette parish personnel and equipment may be sent to assist other political subdivisions outside the parish upon authorization.
- Assistance needed with sheltering, feeding, etc. as necessary will be requested from the American Red Cross, other volunteer groups, neighboring parishes and GOHSEP. If more assistance is needed beyond state capabilities, GOHSEP will coordinate requests to the Federal Emergency Management Agency for a presidential Declaration of an emergency or major disaster to allow supplemental federal assistance to be provided.

VIII. PLAN DEVELOPMENT AND MAINTENANCE

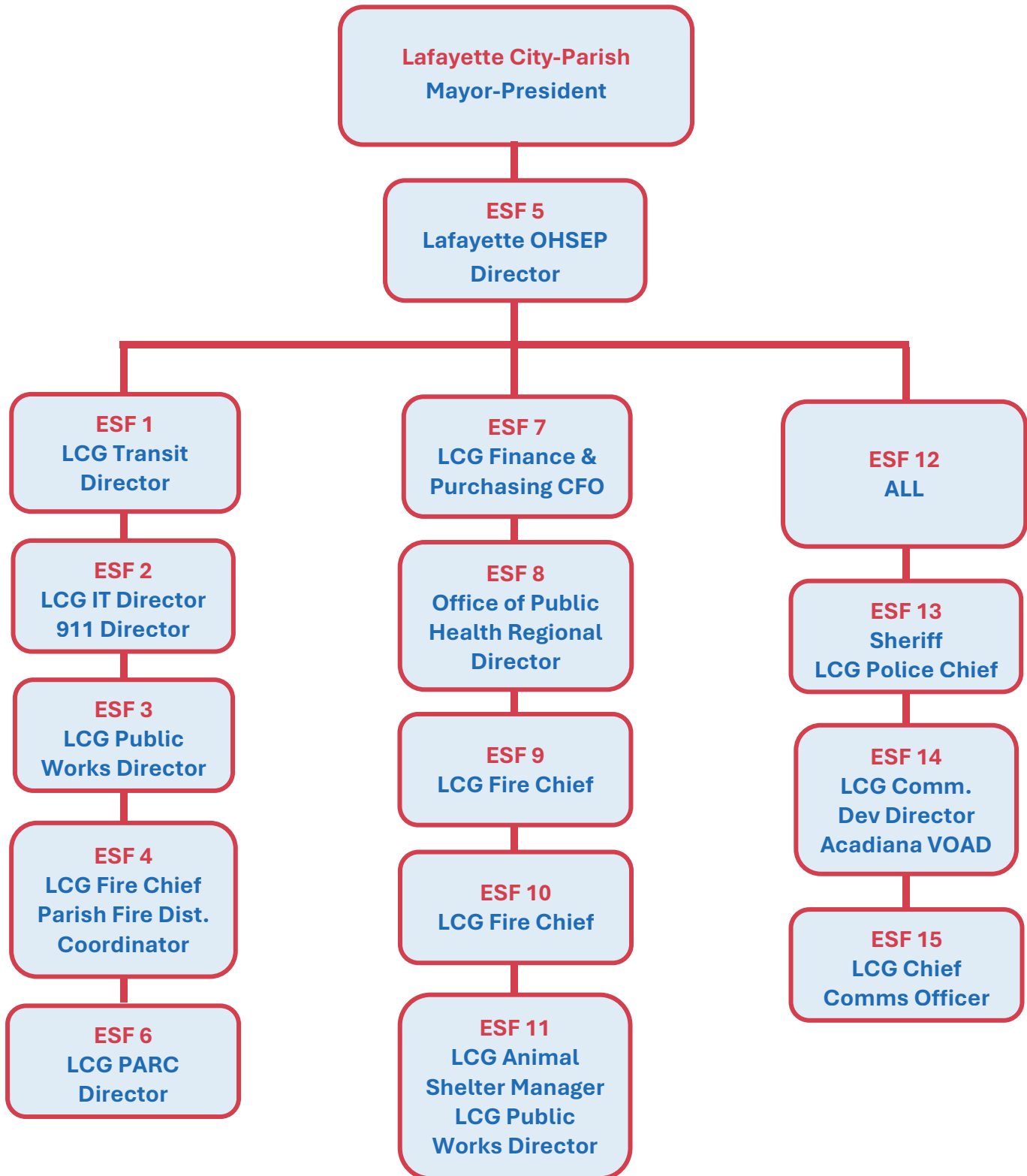
- The Lafayette Parish Office of Homeland Security and Emergency Preparedness, led by the Director, has the overall responsibility for emergency planning, coordination of resources, and provision of direction of disaster response.
- Agency leaders or elected officials, directors of LCG Departments, leaders of supporting agencies have the responsibility for maintaining internal plans, SOPs, and resource data to ensure prompt and effective response to the emergency/disaster.
- This plan will be disseminated to the Mayor-President, departmental directors and all other appropriate officials whose departments play a role in emergency management. These officials will ensure that their personnel are familiar with and ready to employ the plan when needed.
- All agencies will be responsible for the development and maintenance of their respective segments of the plan as set forth earlier under "assignment of responsibilities".
- The Lafayette Parish Homeland Security and Emergency Preparedness Director, with the assistance of his/her staff, will maintain and update this plan as required. Responsible officials in state/local agencies should recommend changes when required and provide information periodically as to changes of personnel and available resources. The Director will coordinate a biannual review and revision effort as necessary. Revisions will be forwarded to those on the distribution list included in this plan.
- This plan will be executed upon order of the Director of the Lafayette Parish Office of Homeland Security and Emergency Preparedness and applies to all elements of the Lafayette Consolidated Government.
- For training and exercise purposes, the Director may activate the plan to provide training opportunities and maintain a readiness posture.

IX. APPENDICES

Appendix 1: Organizational Chart

Appendix 2: Authorities and References

Appendix 1: Organizational Chart



Appendix 2: Authorities and References

Federal

- Federal Civil Defense Act of 1950, Public Law 81-920, as amended.
- Public Law 93-234, as amended The Flood Disaster Protection Act of 1973.
- Public law 93-288, The Disaster Relief Act of 1974, as amended by Public Law 100-707
- The Robert T. Stafford Disaster Relief and Emergency Assistance Act of 1988 as amended, and Related Authorities, FEMA 592, June 2007.
- Homeland Security Act 2002
- Title 44, The Code of Federal Regulations, Part 206.
- Federal Emergency Management Agency, FEMA-64, Emergency Action Planning Guidelines for Dams, 1985.
- Federal Emergency Management Agency, SLG 201, 3rd Edition,, May 2018 State and Local Guide.
- National Response Framework, Fourth Edition, October 28, 2019
- National Incident Management System
- All other Public Laws or Executive Orders enacted or to be enacted which pertain to emergencies/disasters.

State

- The Louisiana Homeland Security and Emergency Assistance and Disaster Act of 1993 as amended.
- Act 111, Emergency Interim State Executive Succession Act of 1963.
- Act 112, Emergency Interim Judicial Succession Act of 1963.
- Act 113 as amended, Emergency Interim Legislative Succession of 1963.
- The Louisiana State Administrative Plan dated 1992, as amended.
- Louisiana Significant/High Hazard Dam Safety Plan 1989
- Louisiana Health Emergency Powers Act (LRS 29:760-772).
- Other Acts, Executive Orders, Proclamations, Compacts, Agreements, and Plans pertaining to emergencies and/or disasters that has been or will be developed or enacted.

Local

- Lafayette Parish Home Rule Charter and Code of Ordinances.
- The Lafayette Parish Emergency Operations Plan.
- The Lafayette Parish Hazard Mitigation Plan.
- Mutual Aid, Letters of Agreement and or Memorandums enacted or to be enacted.
- Other local ordinances pertaining to disasters enacted or to be enacted.

Volunteer

- Louisiana Revised Statutes, Chapter 29:650, Civil Air Patrol.
- Act 58-4-1905, American Red Cross (ARC). Mennonite Disaster Services/FEMA Agreement. Salvation Army Charter, May 12, 1974 and Memorandums of Understanding between Louisiana and the agencies above.

References

- Guide for All Hazard Emergency Operations Planning, (SLG) 101, 1996, Federal Emergency Management Agency.
- Integrated Emergency Management System Capability Assessment and Standards for State and Local Government, Federal Emergency Management Agency, 1983.
- Integrated Emergency Management System Multi-Year Development Planning Interim Guidance, Federal Emergency Management Agency, January 1984.
- Integrated Emergency Management System Process Overview, Federal Emergency Management Agency, September 1983.
- National Incident Management System. United States Department of Homeland Security, Third Edition, October 2017
- Homeland Security Act 2002. United States.
- Comprehensive Preparedness Guide 201
- Homeland Security Presidential Directive 5– Management of Domestic Incidents. 2002.
- Homeland Security Presidential Directive 8– National Preparedness. 2002